

Optiline

Cutting pattern visualization software to control your band saw and maximize volume yield for logs



Cutting pattern inspection

Optiline is the cutting pattern visualization software for controlling your band saw. The software allows the inspection of the cutting pattern on the real log to optimize breakdown for volume yield.

Optiline virtually projects the optimized cutting pattern on the actual image of the head and tail end of the log. This allows the cutting pattern to be inspected and manually modified on the log. Furthermore the software allows a correct rotation and alignment of the log in front of the band saw. The software takes into account all measurement parameters starting from contour to irregularities and flaws.

Optiline controls saws, clamping blocks and subsequent processing stages. On the basis of existing orders and customer-specific final product requirements, Optiline simulates production yield during the work preparation process. Optiline performs best in combination with exact 3D log data from Logeye 300 Multi-Sensor Quality Scanner.

Optiline 3D Log Profile Scanner

Optiline 3D Log Profile Scanner measures the log profile directly on the band saw. This optional 3D log profile scanner can be easily integrated into existing plants.

Optiline Fingerprint Scanner

In front of the band saw, parts of the log are scanned again by Optiline Fingerprint Scanner. Thanks to an exact 3D profile, the optional Optiline Fingerprint Scanner recognizes every log precisely. Logs are optimized and fed in automatically for breakdown to be sawn according to the volume-maximized cutting pattern.



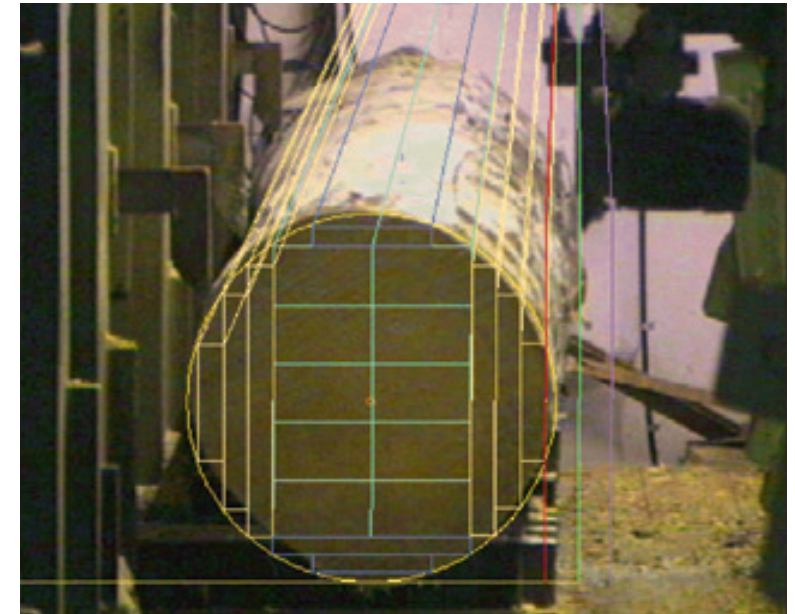
«A perfect cutting pattern to control your band saw based on Optiline allows maximizing volume yield of logs, which is a must-have for every modern band saw mill today.»

Dott. Ing. Federico Giudiceandrea
Microtec CEO

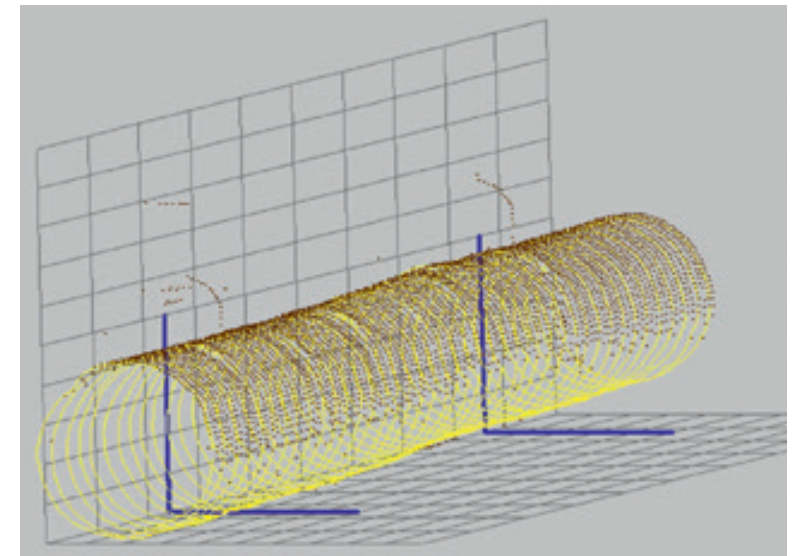


Optiline features

- × Finds the optimum cutting pattern for log volume yield maximization
- × Projects the virtual cutting pattern on a real log front image
- × Enables cutting pattern inspection and manual cutting pattern modification
- × Allows a correct rotation and alignment of logs
- × Takes into account irregularities and flaws
- × Controls saws, clamping blocks and subsequent processing stages
- × Simulates production yield during the work preparation process
- × Optiline 3D Log Profile Scanner measures the log profile directly on the band saw
- × Optiline Fingerprint Scanner reliably recognizes previously scanned logs on the band saw



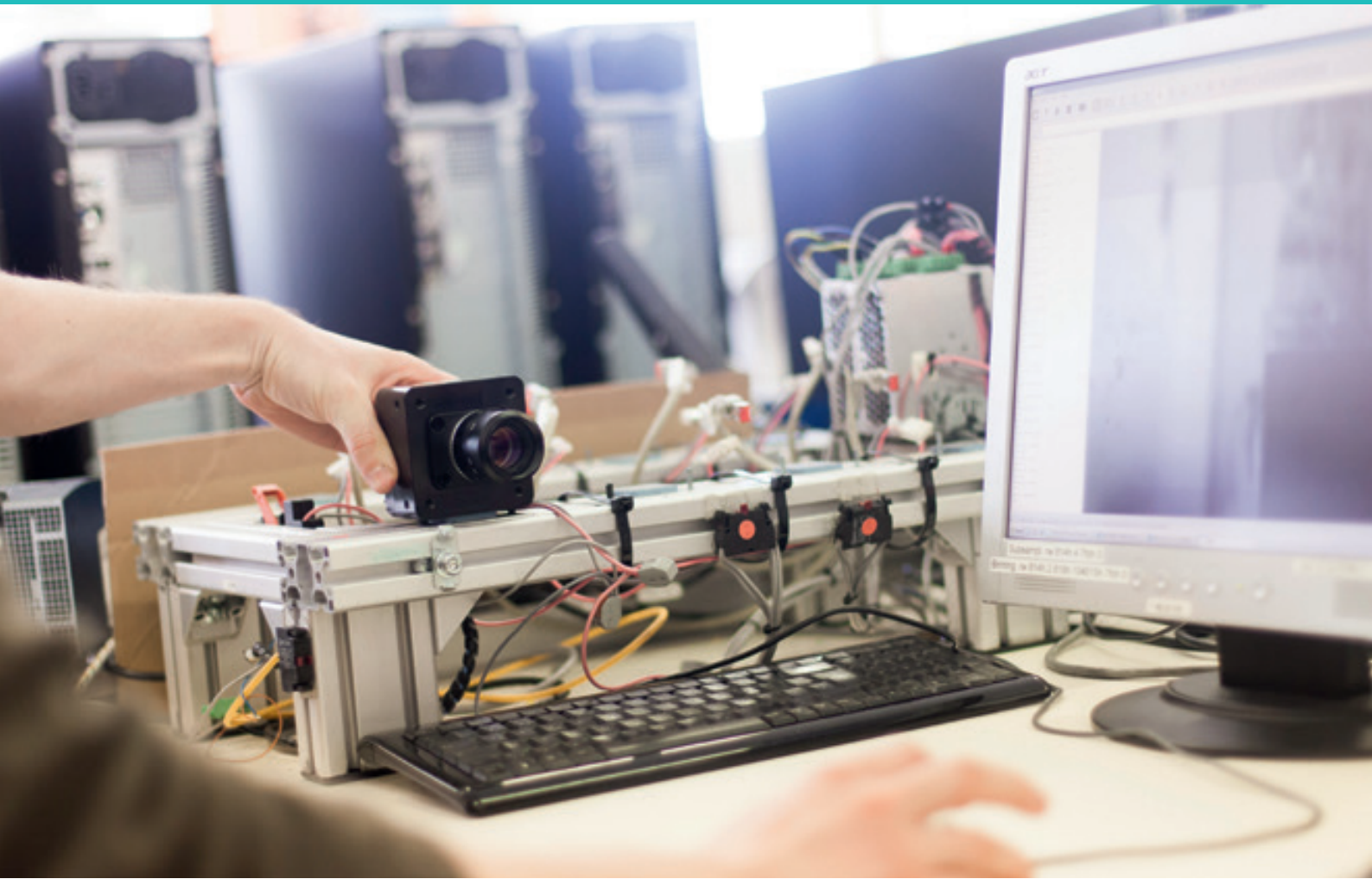
Cutting pattern visualisation on log image in real time



Partial 3D scan directly on carriage



Full log scan recognized by Optiline Fingerprint Scanner



World leading wood scanning solutions

Microtec GmbH Srl
Via Julius-Durst Straße 98
39042 Bressanone/Brixen, Italy
T + 39 0472 273 611
info@microtec.eu
microtec.eu

Design: studiomut.com

