

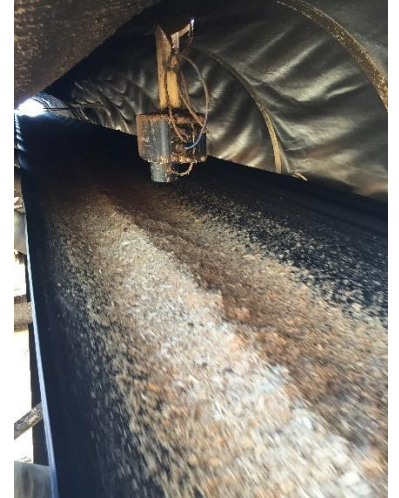
Moisture Content in Wood Chips / Fiber Supply

Chip Quality

The wood chips used in pulp production have natural variations in moisture. The amount of water and bone dry fiber entering the process will vary. The MoistTech On-line and real-time measurement of all the wood chips before they enter the pulp process makes automatic feed-forward adjustments possible.

Unloading Data

Most chip purchasers weigh wet chips, but pay chip suppliers based on dry chips delivered. To calculate the bone-dry tonnage (BDt) delivered, a representative chip moisture content is applied to the wet weight of chips delivered to the mill. MoistTech sensors can be installed at just about every location of incoming material feed. Not limited to truck dumpers, stackers and re-claimers.



Wood Yard Moisture Content

Incoming wood from yard storage can vary largely based on the supplier, weather and season to name a few. By installing the MoistTech IR3000 above the conveyed material plant controls can monitor this moisture content instantly and accurately.



Fiber Supply Moisture

Monitoring and Controlling the fiber supply allows the operator to vary the moisture level of the water that supplies the steam shower, adjusting the flow to match the actual conditions of the fiber.

Pulp & Paper Moisture

Since moisture in paper can be a make-or-break factor in the product's final quality, the use of NIR technology to ensure proper moisture levels is highly valued. MoistTech Corp. offers the 3000 Series Online Moisture Sensor. Unlike other instrumentation of this type, some of the unique features of the IR3000 is that it can monitor the product even with small gaps in product flow and is unaffected by ambient light without impacting the accuracy. The IR3000 is also ideal for installations on chain conveyors and screw conveyors.

The sensor(s) can be located throughout the manufacturing process and can be directly connected to the users PLC or any laptop. Ethernet 4-20 ma are included as well as our high-tech Windows operating software. DPM-Digital Panel Meter and a Color Touch Screen Operator Interface are also available as read-out options.

For much more information contact www.MoistTech.com