



K5 – New control system generation for timber drying lines

- The latest in future-oriented technology
- 3D visualisation and complete graphic depiction
- Extensive drying know-how
- The latest findings from MÜHLBÖCK R&D
- Assistance and reporting functions
- MÜHLBÖCK Support

MÜHLBÖCK
DRYING-TECHNOLOGY

Extensive functionality

The **MÜHLBÖCK K5 control system** is the suitable solution for all of the demands placed on timber drying.

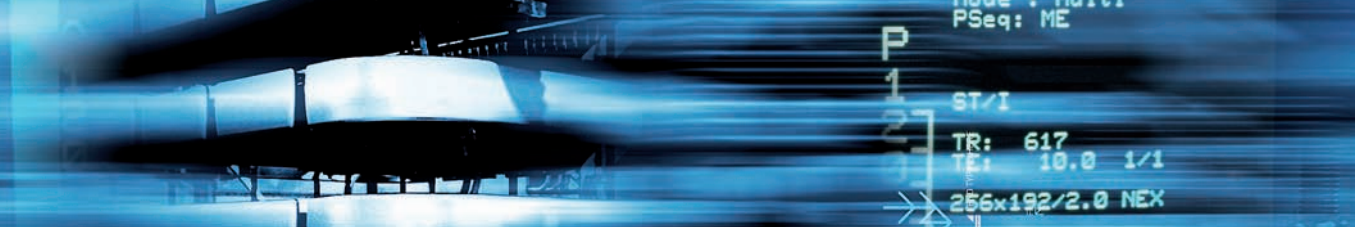
- For every operating size and number of drying kilns
- For all drying kilns (Type Classic, type 1003, type 603, type 606 canal drier, VLSM, steam chamber..)
- For all timber types
- For all company requirements
- For many Mühlböck additional applications



MÜHLBÖCK drying know-how

The K5 control system contains the extensive know-how derived from experience with more than 10,000 drying kilns and the current findings of MÜHLBÖCK's R+D department

- Drying programme suggestions for various types of timber, applications and qualities
- Various programme modes
 - Mode: drying with timber dampness measuring points
 - Mode: drying according to the time
 - Mode: comfort + no measuring points necessary;
Dimension, select desired end dampness and quality;
K5 calculates the necessary drying time and regulates this automatically



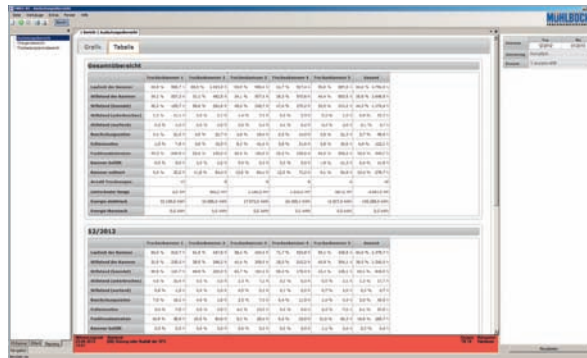
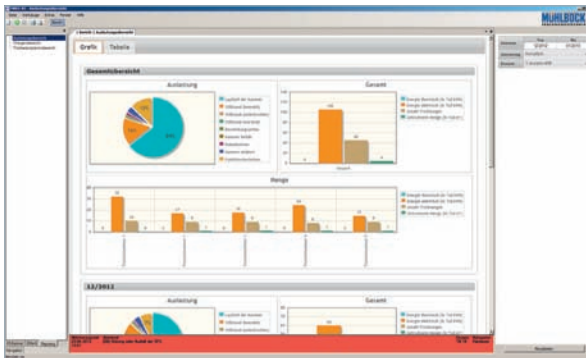
Safe future technology

- BU up to 75 timber dampness measuring points per drying kiln
Up to 16 timber temperature sensors per drying kiln
Industrial control system from Siemens or B&R
- **Simple:**
Easy upgrading of existing control systems
- **Flexible:**
Either B&R or Siemens Hardware
- **Fast:**
Connection of control systems and PC via TCP/IP

Support from the Assistance and Reporting functions

The K5 control system offers diverse opportunities for support when drying timber

- Assistant with regard to selecting the right measuring points
- Drying time forecast
- IntelliVent – enormous reduction in electricity costs as a result of the continuous adjustment of the speed of the ventilating fans to the drying process
- User-dependent and theme-oriented protocol settings
- Platform for production planning
- Reporting function (according to user groups)
- Extensive data bank evaluations

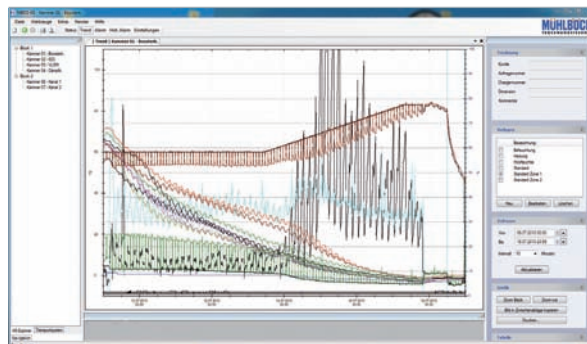


Open to all interfaces

- Interfaces to the ERP-systems (optional)
- Operation using mobile data carriers (Smartphones)
- Visualisation on various computers
- Access to visualisation outside the company

Malfunction-free

- Remote control at any time via the Internet through to SPC
- Software-Updates of control system via the Internet
- Automatic notification via E-Mail or SMS



Further advantages for you:

- Highest operational and future reliability due to the use of standardised industrial components.
- Always at the latest development and technology level as a result of the possibility of Software-Updates. Thus you have access to the most recent drying programmes from our research and development department.
- Utilisation of Mühlböck Support as a result of connection to our remote maintenance system.
- Cost optimisation as a result of the complete recording and clear presentation of the drying data.
- Traceability at any time of the drying processes which have already taken place as a result of extremely precise documentation and archiving.
- 24-hour Service Hotline
- Highly accurate timber moisture measurement with range switching
- Precise regulation of temperature and climate
- Intuitive operation in language of country



Platform for many add-on models:

- Energy manager
- IntelliVent
- Drying assistant
- Transport system for canal drier
- Batch management
- and lots more.

MÜHLBOECK
DRYING-TECHNOLOGY

MÜHLBOECK HOLZTROCKNUNGSANLAGEN GMBH
A-4906 EBERSCHWANG 45 - AUSTRIA
TEL.+43(0)7753/2296-0, FAX+43(0)7753/2296-9000
E-mail:office@muehlboeck.com