

 Nanxing 南兴®	东莞市南兴家具装备制造股份有限公司 NANXING FURNITURE MACHINERY & EQUIPMENT CO.,LTD.	Machine	High speed wood machining center
		Model	MGK07
Specification		Page	1/7

High speed wood machining center

Model: MGK07

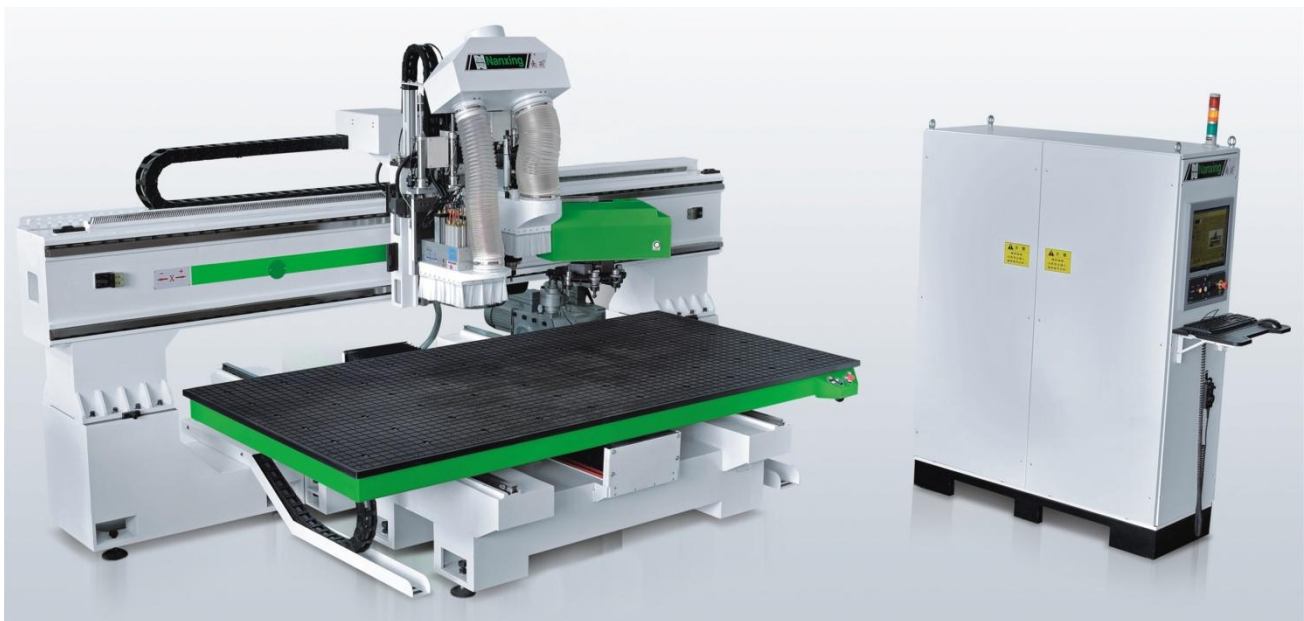
Manufacturer: Nanxing

Original: Guangdong, China

Date: December, 2014

1. Technical data

working distance	X-axis: 3500 mm	Y-axis: 1700 mm
	Z-axis: 270 mm	
working table	3050×1600 mm	
max. traveling speed	X-axis: 50 m/min	Y-axis: 50 m/min
	Z-axis: 20 m/min	
main spindle	number of main spindle: 1	rotating speed: 24000 rpm
	power: 9 kW	tool holder: HSK-F63
	number of tools: 8	coupler size: ER32
drilling block	power: 1.3 kW	vertical drills: 7
	horizontal drills (X) : 1 + 1	horizontal drills (Y): 1 + 1
vacuum pump	power: 5.5 kW	suction flow rate: 250 m ³ /h
	suction pressure: 0.8 kg/cm ²	
dust extraction	dust pipe: Φ200	
air supply	air pressure: 6 kg/cm ²	
power supply	frequency: 50 Hz	voltage: 380 V ; 3 phases
machine size	L×W×H: 4220×3450×2135 mm	net weight: 6000 kg



 Nanxing 南兴®	东莞市南兴家具装备制造股份有限公司 NANXING FURNITURE MACHINERY & EQUIPMENT CO.,LTD. Http://www.nanxing.com.cn E-mail:info@nanxing.com.cn	地址:广东省东莞市厚街镇双岗家具大道125号
		Add: No 125 Furniture Boulevard. Houjie Town. dongguan Guangdong. China 电话 (Tel) : +86-400 888 2033 +86-769-85827789 传真 (Fax) : +86-769-85592399

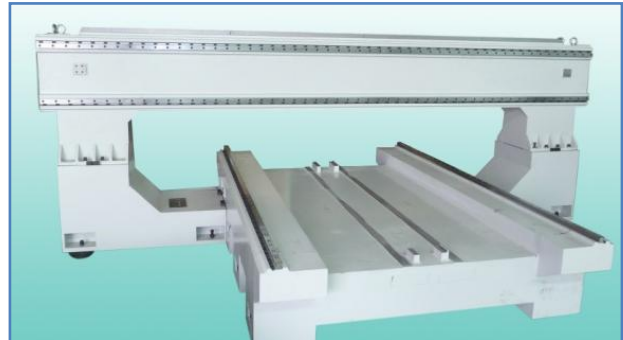
 Nanxing 南兴®	东莞市南兴家具装备制造股份有限公司 NANXING FURNITURE MACHINERY & EQUIPMENT CO.,LTD.	Machine	High speed wood machining center
		Model	MGK07
Specification		Page	2/7

2. Features

- (1) With industrial computer installed within the control center and completed with Windows system, user-friendly CAM software and graphs aided programming, the machine is easy to operate that improves work efficiency.
- (2) Machine body is constructed with heavy steel for high accuracy and durability. Most of electric and pneumatic components are international famous brands sourced from our supplier partners.
- (3) The main spindle is paired with a 9.0 kW motor with rotating speed up to 24000 rpm.
- (4) Travelling speed of X-axis reaches to 70 m/min that meets the requirement for high production.
- (5) Drilling block with 7 vertical and 4 horizontal drills which can be controlled independently by programs to improve efficiency.
- (6) Solid built ATC 8 station for changing of 8 different tools automatically that makes it possible to finish a set of complex processing of work piece effectively.
- (7) Central lubrication system is installed for providing continuous smoothness and workability of the machine.

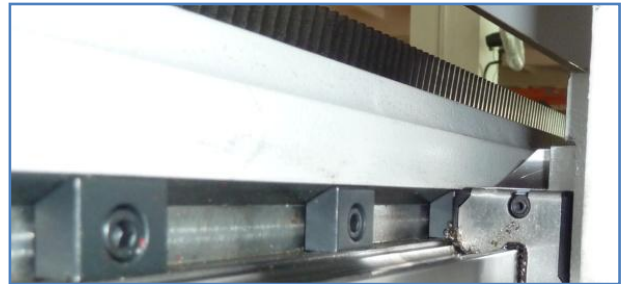
3. Body frame

The frame is made of heavy steel that provides a long life and a strong capacity of load.



4. Transmission mode

- X-axis, rack and pinion;
- Y-axis, rack and pinion;
- Z-axis, ball screw.



5. Ball screw

- Less friction, high efficiency;
- High precision and rigidity, zero clearance;
- With a wide range of feeding speed.



 Nanxing 南兴®	东莞市南兴家具装备制造股份有限公司 NANXING FURNITURE MACHINERY & EQUIPMENT CO.,LTD.	Machine	High speed wood machining center
		Model	MGK07
Specification		Page	3/7

6. Servo motors

The accurate movement of each axis is ensured by the high quality servo motors.



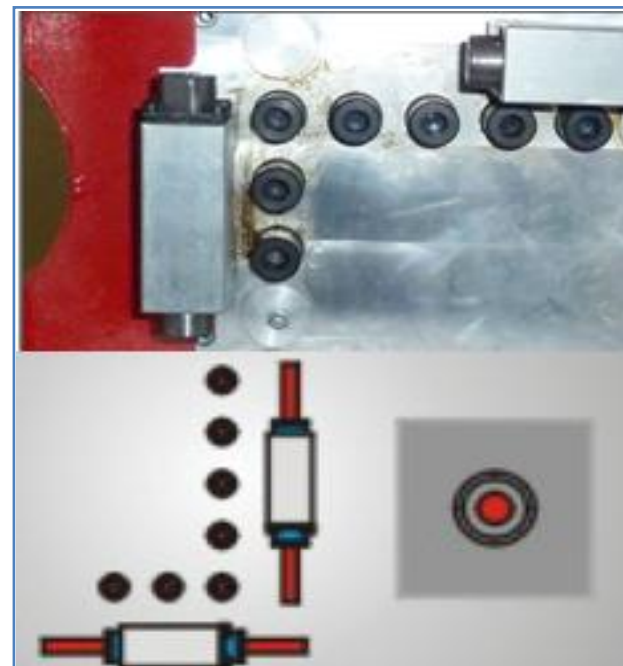
7. Main spindle

- Italy HSD air cooling spindle;
- High precision and stability, long life;
- Power: 9 kW;
- Tool holder: HSK-63;
- Rotating speed: 24000 rpm.



8. Drilling block

- 7 vertical drills, 4 horizontal drills (1 drill in each direction);
- Rotation direction: clockwise, counter clockwise;
- Diameter of drill shank: 10 mm;
- Maximum borehole diameter: 35 mm;
- Center distance of drills: 32 mm;
- Each drill can be controlled separately.



 Nanxing 南兴®	东莞市南兴家具装备制造股份有限公司 NANXING FURNITURE MACHINERY & EQUIPMENT CO.,LTD.	Machine	High speed wood machining center
		Model	MGK07
Specification		Page	4/7

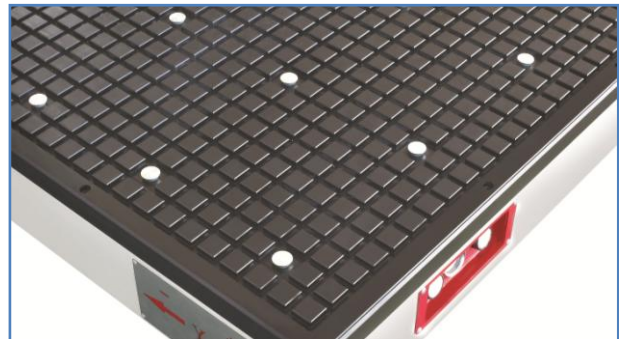
9. Automatic tool changer

- Tool holder: HSK-F63;
- Number of tools: 8;
- Time of tool changing: 12-18 seconds.



10. Working table

The crisscrossed grooves provide excellent vacuum sorption effect. Workpieces of different shapes and sizes can be easily fixed on the table.



11. Vacuum Pump

Equipped with one vacuum pump of 7.5 kW, 240 m³/h.



 Nanxing 南兴®	东莞市南兴家具装备制造股份有限公司 NANXING FURNITURE MACHINERY & EQUIPMENT CO.,LTD.	Machine	High speed wood machining center
		Model	MGK07
Specification		Page	5/7

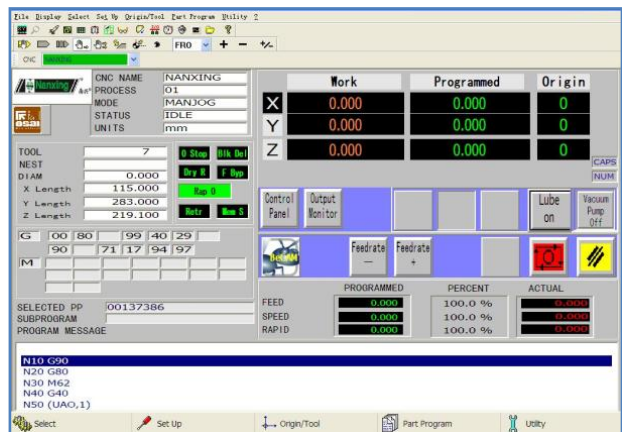
12. Electric equipment

- Independent electric cabinet;
- Windows operating system;
- 17" display;
- Operation panel with an emergency button.

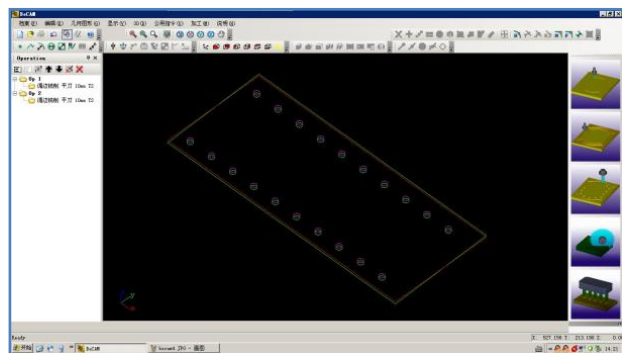


13. Soft ware

Italy OSAI control system provides stable performance, powerful functions and ease of use. (English and Chinese are available.)



The NanxingCAM software generates and output NC codes which can be read by machine to control the process, more accurate and more efficient.



 Nanxing 南兴®	东莞市南兴家具装备制造股份有限公司 NANXING FURNITURE MACHINERY & EQUIPMENT CO.,LTD. Http://www.nanxing.com.cn E-mail:info@nanxing.com.cn	地址:广东省东莞市厚街镇双岗家具大道125号 Add: No 125 Furniture Boulevard. Houjie Town. dongguan Guangdong, China 电话(Tel) :+86-400 888 2033 +86-769-85827789 传真(Fax) :+86-769-85592399
---	--	---

 Nanxing 南兴®	东莞市南兴家具装备制造股份有限公司 NANXING FURNITURE MACHINERY & EQUIPMENT CO.,LTD.	Machine	High speed wood machining center
		Model	MGK07
Specification		Page	6/7

14. Dust extraction

- Designed professionally; 2 individual hoses right at the points of dust;
- Hose diameter: $\Phi 200$;
- Number of outlet: 1;
- Required suction speed: 28 m/s.



15. Lubrication

The machine is equipped with lubrication system that reduces the need of maintenance by operators.



 Nanxing 南兴®	东莞市南兴家具装备制造股份有限公司 NANXING FURNITURE MACHINERY & EQUIPMENT CO.,LTD.	Machine	High speed wood machining center
		Model	MGK07
Specification		Page	7/7

16. Tool probe

The device effectively improves accuracy and efficiency of tool setting.



17. Dust cover

The ball screw is paired with a cover that provides excellent protection from dust.



18. Air conditioner for electrical cabinet



* Due to the continuous improvements of our products, some changes for better machine may apply!