

# HIGH VACUUM

## Pipe System Product Catalogue

HV 16:1 English

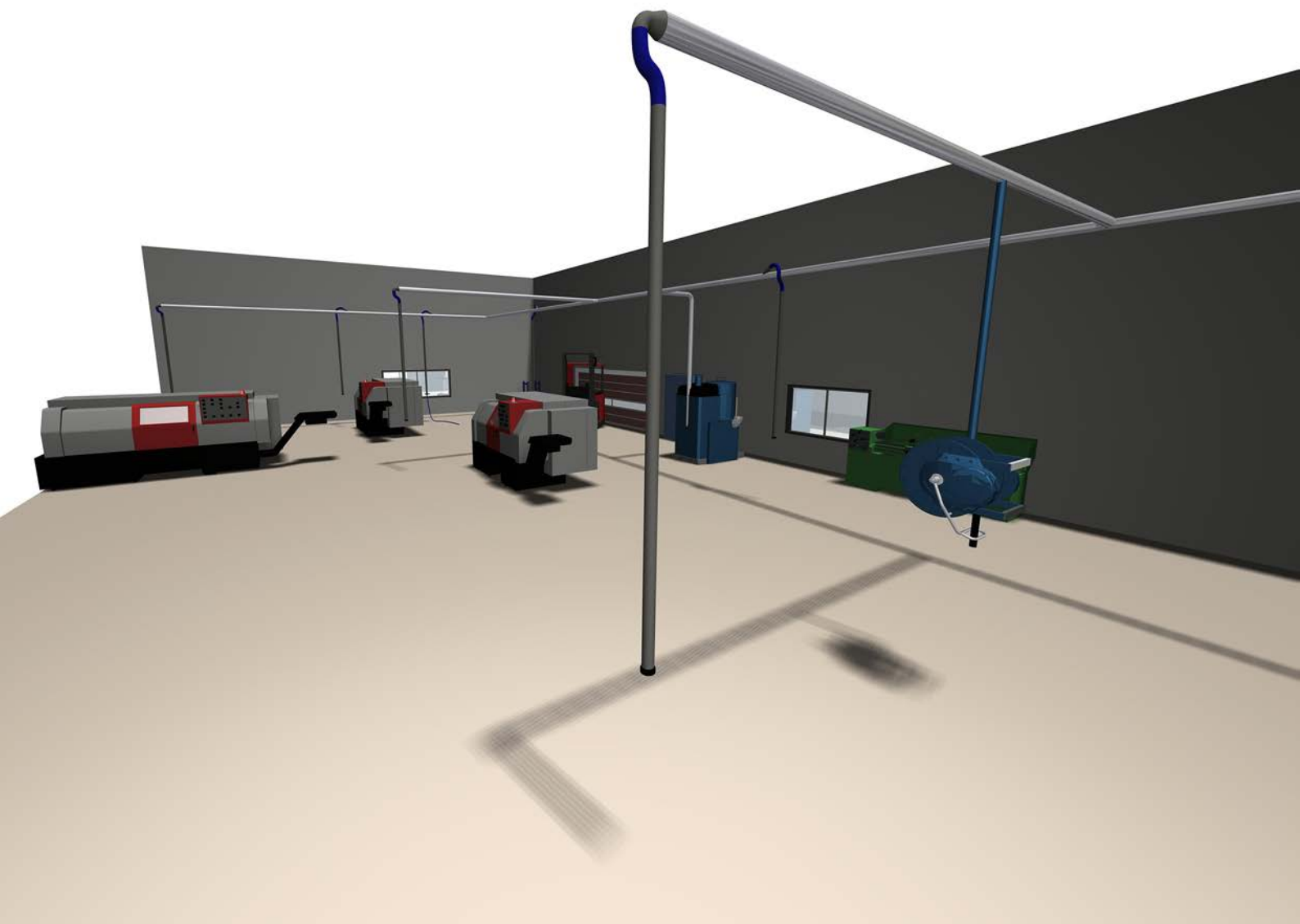
**Fast, Friendly and Reliable™**

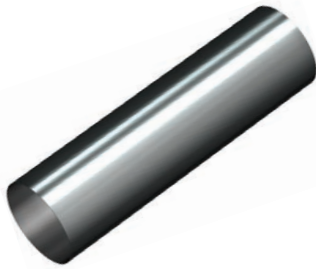
## Our high vacuum pipes can be used for many applications.

The term 'high vacuum' refers to the high vacuum and low airflow used to catch, transport and filter fumes, dust and other particles.

Our solutions include:

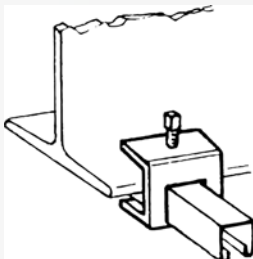
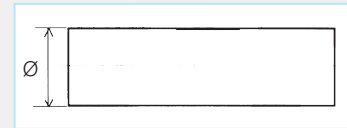
- Extraction of fumes from welding torches
- Extraction of grinding dust directly from the handheld grinding machine thanks to our range of manifolds that matches most handheld machines on the market
- Cleaning of floors and machines etc. with our wide choice of accessories
- Transport of large volumes of material which may be both heavy and abrasive





**Pipes** Galvanised steel pipes, used as main pipes.

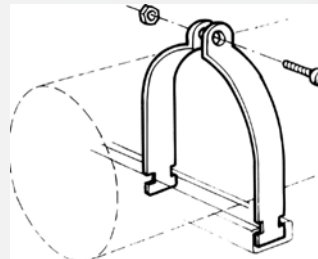
| Ø, mm | Part no. | L mm | Thickness mm | Weight, kg |
|-------|----------|------|--------------|------------|
| 50    | 40130440 | 3000 | 1,2          | 5,5        |
| 50    | 40130450 | 6000 | 1,2          | 10,9       |
| 63    | 40130420 | 3000 | 1,2          | 5,5        |
| 63    | 40130430 | 6000 | 1,2          | 11,0       |
| 76    | 40130400 | 3000 | 1,2          | 5,6        |
| 76    | 40130410 | 6000 | 1,2          | 11,1       |
| 102   | 40130380 | 3000 | 1,2          | 8,8        |
| 102   | 40130390 | 6000 | 1,2          | 17,5       |
| 127   | 40130360 | 3000 | 1,5          | 9,3        |
| 127   | 40130361 | 6000 | 1,5          | 18,6       |
| 152   | 40130340 | 3000 | 1,5          | 11,0       |
| 152   | 40130350 | 6000 | 1,5          | 33,0       |
| 203   | 40130320 | 3000 | 1,5          | 22,0       |
| 203   | 40130330 | 6000 | 1,5          | 44,0       |



**Beam clamps**

Used in pairs to fix universal profiles to beams where drilling is not permitted/possible.  
Beam flange: max. 25 mm.

| Part no  |
|----------|
| 40170250 |



**Pipe clamp**

Used to suspend pipes together with universal bracket or profile.  
In two halves, bolt and nut.

| Ø mm | Part no  |
|------|----------|
| 50   | 40170160 |
| 63   | 40170170 |
| 76   | 40170180 |
| 102  | 40170190 |
| 127  | 40170230 |
| 152  | 40170210 |
| 203  | 40170220 |



**Universal bracket**

For suspending pipes.

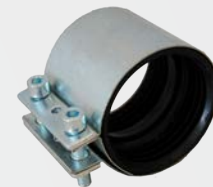
| Ø mm | Part no  |
|------|----------|
| 150  | 40170010 |
| 300  | 40170020 |
| 450  | 40170030 |



**Universal bracket**

For suspending wall-mounted pipes.

| Ø mm | Part no  |
|------|----------|
| 102  | 40170060 |
| 300  | 40170070 |
| 2000 | 40170080 |



**Pipe coupling**

Used to join pipes together.  
The rubber is electrically conductive.

| Ø mm | Part no  |
|------|----------|
| 50   | 43884001 |
| 63   | 40139350 |
| 76   | 40139420 |
| 102  | 40139370 |
| 127  | 40139410 |
| 152  | 40139360 |
| 203  | 40139400 |



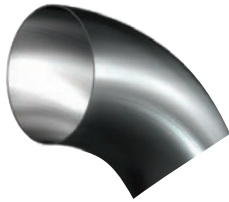
**Channel Nut with Short Spring**

| Ø mm                        | Part no  |
|-----------------------------|----------|
| Fits all universal brackets | 40170260 |



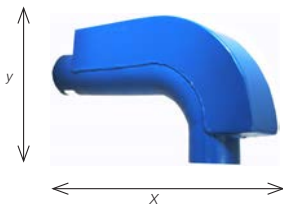
**Bends, 90° Galvanised steel bends**

| Ø mm | Part no. | Center Radius mm | Thickness mm | Weight kg |
|------|----------|------------------|--------------|-----------|
| 50   | 40130790 | 85               | 1,5          | 0,3       |
| 63   | 40130780 | 100              | 1,5          | 0,5       |
| 76   | 40134020 | 170              | 1,5          | 1,0       |
| 102  | 40131070 | 200              | 2,0          | 2,0       |
| 127  | 40134000 | 170              | 2,0          | 2,1       |
| 152  | 40130750 | 225              | 2,0          | 3,2       |
| 203  | 40134251 | 300              | 2,0          | 4,8       |



**Bends, 45° Galvanised steel bends**

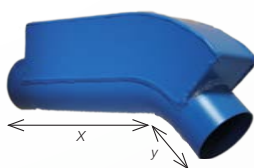
| Ø, mm | Part no. | Center Radius mm | Thickness mm | Weight kg |
|-------|----------|------------------|--------------|-----------|
| 50    | 40130840 | 85               | 1,5          | 0,2       |
| 63    | 40134100 | 100              | 1,5          | 0,3       |
| 76    | 40134030 | 170              | 1,5          | 0,7       |
| 102   | 40131080 | 200              | 2,0          | 1,2       |
| 127   | 40134010 | 170              | 2,0          | 1,4       |
| 152   | 40134340 | 225              | 2,0          | 2,1       |
| 203   | 40134249 | 300              | 2,0          | 2,5       |



**Reinforced steel bends, 90° steel bends with swarf box**

Finish RAL5009 blue

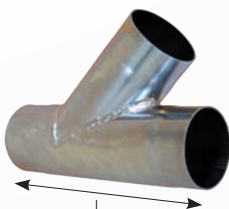
| Ø, mm | Part no. | Thickness mm | Weight kg | X mm | Y mm |
|-------|----------|--------------|-----------|------|------|
| 63    | 40134201 | 1,5          | 1,5       | 265  | 115  |
| 102   | 40134221 | 2,0          | 4,9       | 400  | 185  |



**Reinforced steel bends 45° steel bends with swarf box**

Finish RAL5009 blue

| Ø, mm | Part no. | Thickness mm | Weight kg | X mm | Y mm |
|-------|----------|--------------|-----------|------|------|
| 63    | 40134301 | 1,5          | 1,0       | 185  | 35   |
| 102   | 40134321 | 2,0          | 3,8       | 260  | 45   |



**Branch pipes**

Galvanised branch pipes. Used to join vacuum pipes together or connect a suction pipe. 45° branch.

| Ø, mm       | Part no. | L mm | Thickness, mm | Weight, kg |
|-------------|----------|------|---------------|------------|
| 50-50-50    | 40130650 | 150  | 1,5           | 0,4        |
| 63-63-63    | 40130660 | 300  | 1,5           | 0,6        |
| 76-76-63    | 40135650 | 200  | 1,5           | 1,0        |
| 76-76-76    | 40135640 | 270  | 1,5           | 1,0        |
| 102-102-63  | 40130600 | 280  | 2,0           | 1,4        |
| 102-102-76  | 40135630 | 300  | 2,0           | 1,8        |
| 127-127-76  | 40135620 | 300  | 2,0           | 2,2        |
| 127-127-102 | 40135610 | 350  | 2,0           | 2,8        |
| 152-152-152 | 40134150 | 500  | 2,0           | 4,0        |



### Branch pipes, parallel

Galvanised branch pipes. Used to join vacuum pipes together. Parallel branch.

| Ø, mm       | Part no. | L mm | Thickness mm | Weight kg |
|-------------|----------|------|--------------|-----------|
| 102-102-102 | 40130630 | 350  | 2,0          | 2,7       |
| 152-152-102 | 40130640 | 250  | 2,0          | 2,6       |



### T-pipe

Galvanised pipe branch used between dust separator and vacuum unit for parallel connection.

| Ø, mm       | Part no. | L mm | Thickness mm | Weight kg |
|-------------|----------|------|--------------|-----------|
| 152-152-152 | 40130120 | 250  | 2,0          | 4,4       |
| 203-203-203 | 40130210 | 300  | 2,0          | 6,1       |

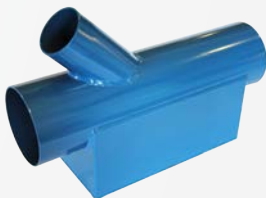


### Y-Branch pipes 45° branch

| Ø, mm       | Part no. | L mm | Thickness mm | Weight kg |
|-------------|----------|------|--------------|-----------|
| 50-50-50    | 40136030 | 150  | 1,5          | 0,4       |
| 63-63-63    | 40136031 | 150  | 1,5          | 0,6       |
| 76-76-76    | 40136032 | 150  | 1,5          | 1,0       |
| 102-102-102 | 40136033 | 200  | 2,0          | 1,4       |
| 127-127-127 | 40136034 | 200  | 2,0          | 2,2       |
| 152-152-152 | 40136035 | 200  | 2,0          | 2,8       |
| 203-203-203 | 40136036 | 200  | 2,0          | 4,0       |

### Reinforced branch pipes Branch pipes with swarf box.

Finish RAL5009 blue



| Ø mm        | Part no  |
|-------------|----------|
| 63-63-63    | 40134101 |
| 102-102-63  | 40134121 |
| 102-102-102 | 40134131 |

### Cone / Reducer

Galvanised.



| Ø, mm   | Part no. | L mm | Thickness mm | Weight kg |
|---------|----------|------|--------------|-----------|
| 63-50   | 40130730 | 67   | 1,5          | 0,2       |
| 76-50   | 40135750 | 70   | 1,5          | 0,2       |
| 76-63   | 40135740 | 75   | 1,5          | 0,2       |
| 102-76  | 40135830 | 120  | 1,5          | 0,4       |
| 108-102 | 40135840 | 120  | 1,5          | 0,5       |
| 127-76  | 40135820 | 120  | 2,0          | 0,6       |
| 127-102 | 40135810 | 120  | 2,0          | 0,7       |
| 152-127 | 40135800 | 120  | 2,0          | 0,8       |
| 203-152 | 40130020 | 150  | 2,0          | 1,4       |



### Reducer, eccentric

Cast aluminum.

| Ø, mm   | Part no. | L mm | Thickness mm | Weight kg |
|---------|----------|------|--------------|-----------|
| 102-63  | 40130710 | 125  | 1,5          | 0,6       |
| 152-102 | 40130700 | 145  | 2,0          | 1,1       |



### End cover

Used to block of the end of a pipe.

| Ø mm | Part no  |
|------|----------|
| 50   | 40130031 |
| 63   | 40130030 |
| 102  | 40130040 |
| 152  | 40130050 |
| 203  | 40130060 |



### Leaf Valve MDKB

Electrically zinc coated with spring-loaded lock. Connected with hose coupling MDKS.

| Ø mm  | Part no  |
|-------|----------|
| 50-50 | 40136000 |
| 63-50 | 40136001 |
| 63-63 | 40136002 |
| 76-63 | 40136003 |



### Leaf Valve MDKM

Electrically zinc coated with spring-loaded lock and furnished with a micro switch. Connected with hose coupling MDKS.

| Ø mm  | Part no  |
|-------|----------|
| 50-50 | 40136020 |
| 63-50 | 40136021 |
| 63-63 | 40136022 |
| 76-63 | 40136023 |



### Rubber Hose

The hose will be used as bends. Rubber bends are used when conveying abrasive material such as shavings, sand, dust and powder etc. Inner tube: wear resistant SBR/NR, black, smooth. Reinforcement: synthetic textile with embedded steel helix. Cover: wear and weather resistant SBR/NR, black, corrugated. Temperature range: -40°C to +90°C. Electrical properties: conductive tube and cover,  $R < 106 \Omega/m$ . Available in 12m lengths.

| Inside Ø mm | Part no  |
|-------------|----------|
| 63          | 82100126 |
| 76          | 82100127 |
| 102         | 82100128 |
| 127         | 82100129 |
| 152         | 82100130 |



### Hose Connector MDKS

| Ø mm  | Part no  |
|-------|----------|
| 50-38 | 40136040 |
| 50-50 | 40136042 |
| 63-50 | 40136043 |
| 63-63 | 40136044 |
| 76-63 | 40136045 |



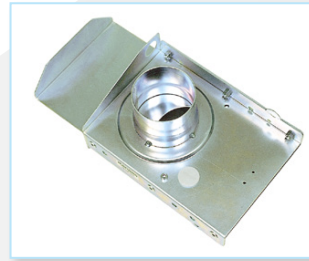
### Hose Clamps

Two clamps needed for each length of hose.

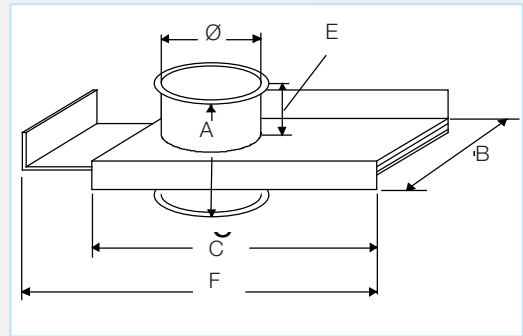
| Inside Ø mm | Part no  |
|-------------|----------|
| 63          | 82100131 |
| 76          | 82100132 |
| 102         | 82100133 |
| 127         | 82100134 |
| 152         | 82100135 |

## SBBA Manual Damper

The SBBA is a circular slide damper for tight closure. In the closed position, the damper is airtight and silent. Since there is no damper blade in the air stream in the open position, the damper is suitable for use in systems for dust-laden air. The damper is used for closing extraction points on machinery and in workplaces not currently in use.

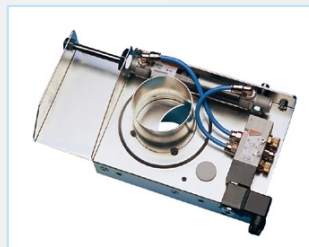


| ORDER EXAMPLE: SBBA-076 |          |      |      |      |      |      |           |
|-------------------------|----------|------|------|------|------|------|-----------|
| Ø mm                    | Item no. | A mm | B mm | C mm | E mm | F mm | Weight kg |
| 50                      | SBBA-050 | 145  | 140  | 225  | 60   | 285  | 2,1       |
| 63                      | SBBA-063 | 145  | 140  | 225  | 60   | 300  | 2,1       |
| 76                      | SBBA-076 | 145  | 160  | 255  | 60   | 345  | 2,7       |
| 102                     | SBBA-102 | 145  | 205  | 345  | 60   | 480  | 3,6       |

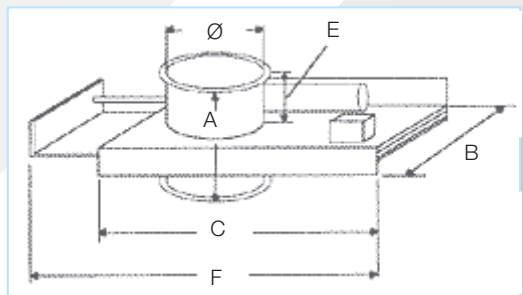


## SBBB Pneumatic Damper

The SBBB is a circular compressed air powered automatic slide damper for rapid and tight closure. Since the damper is opened and closed automatically, extraction is always focused on the connections, extraction points or machines currently in operation. This maximizes extraction power, with lower energy consumption as a bonus.



| ORDER EXAMPLE: SBBB-RK-102 |             |      |      |      |      |      |           |
|----------------------------|-------------|------|------|------|------|------|-----------|
| Ø mm                       | Item no.    | A mm | B mm | C mm | E mm | F mm | Weight kg |
| 50                         | SBBB-RK-050 | 145  | 140  | 195  | 60   | 220  | 2,3       |
| 63                         | SBBB-RK-063 | 145  | 140  | 195  | 60   | 220  | 2,3       |
| 76                         | SBBB-RK-076 | 145  | 160  | 225  | 60   | 250  | 3,0       |
| 102                        | SBBB-RK-102 | 145  | 205  | 315  | 60   | 340  | 4,0       |



- The damper should be connected to clean and dry compressed air
- Working pressure 5-8 bar
- Maximum temperature 80° C
- Voltage: 230V AC (Coils for 24-48-110V AC & DC optional)



## General conditions of sale

### Shipping and Packaging

An additional charge for shipping and packaging may be applied.

### Delivery Times

Order with parts available at stock and manufactured parts will be shipped in 1 - 2 days after order receipt. Larger project orders 20 days.

### Upon Receipt of Delivery

Please check the number of packages and that all components are intact before signing the waybill. If you are not completely satisfied with your order, please contact us.

*Contact Mail Order:*  
salesdk@nordfab.com

*Contact Phone Order:*  
+45 86 47 11 00

*Contact Order fax:*  
+45 99 68 09 01

*Contact Internet:*  
www.nordfab.eu

### Conditions for Returning goods

Please contact us before returning goods.  
Fax +45 99 680901, phone +45 86 47 11 00.  
When returning goods, please enclose a copy of the original invoice or delivery note. Returns without agreement and/or attached documents will not be credited. Un-damaged standard items should be returned in original packaging. 30% re-stocking charge apply. Delivery charges for returned items are to be paid by the customer.

### Tracking Goods

Please use the waybill number on your current bill to track goods. Goods can be tracked using:

*DHL Customer service*  
visit [www.dhl.com](http://www.dhl.com).

*Schenker*  
Phone terminal on each city or  
visit [www.schenker.com](http://www.schenker.com).

*Other companies*  
Phone terminal on each city.

### Price, reservation and technological changes

We reserve the right to change our prices at any time. To ensure you have the latest prices, please check our website [www.nordfab.eu](http://www.nordfab.eu).

### Product Documentation

For our product technical data sheets, please visit our website: [www.nordfab.eu](http://www.nordfab.eu).

### Hours of Operation

Weekdays 7:00 to 16:00.

Contact / order:  
salesdk@nordfab.com  
phone +45 86 47 11 00

[www.nordfab.eu](http://www.nordfab.eu)

