



“Opti-Soft” LLC – optimization software for industry

Contacts

<http://www.opti-soft.ru/>

[e-mail: sales@opti-soft.ru](mailto:sales@opti-soft.ru)

tel. +7 (8142) 713210

185910, IT-park of PetrSU

31 Lenin av, Petrozavodsk

Republic of Karelia

Russia

Established in 2002

Now: a group of 4 entities, 80+ employees

3 business lines:

1. BL «**Services**» (custom software development):



2. BL «**PCS**» (Valmet / Metso DNA training and projects)

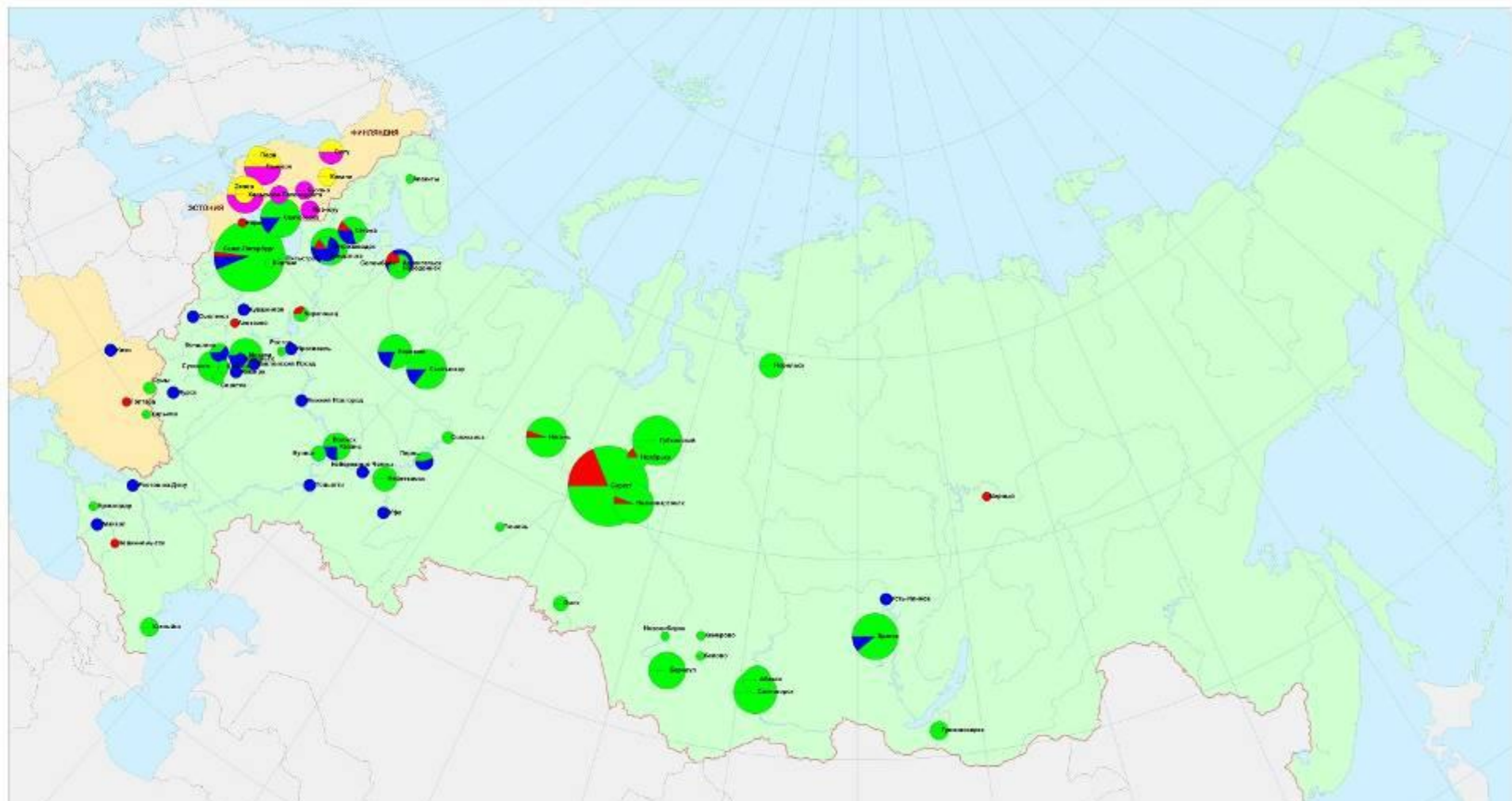
3. BL «**Products**» (optimal production planning systems)



1. Main industrial customers and partners



1. Geography of projects, customers and partners



- Enterprise Management - number of completed projects
- Process Control - number of completed projects
- Process Control - number of trained specialists
- Foreign Customers - number of Customer companies and organizations
- Foreign partners - number of partner companies and organizations

2. Cooperation with Valmet and Metso

Valmet: since 1993. On average 30+ full-time persons in R&D

- Since 2003 **multiple** full-size applications and major platform enhancements delivered **world-wide** in **all parts** of Valmet DNA platform: reporting, analysis, monitoring, configuration, diagnostics, templates, inter-systems communication, ...
- 10 International conferences “New Information Technologies in the Pulp and Paper Industry and Energy” (1994-2012)
- 11th International conference “Automation and Control in Forestry and Energy Industries” (20-21 April 2016)

Metso: since 2013, 5 full-time persons

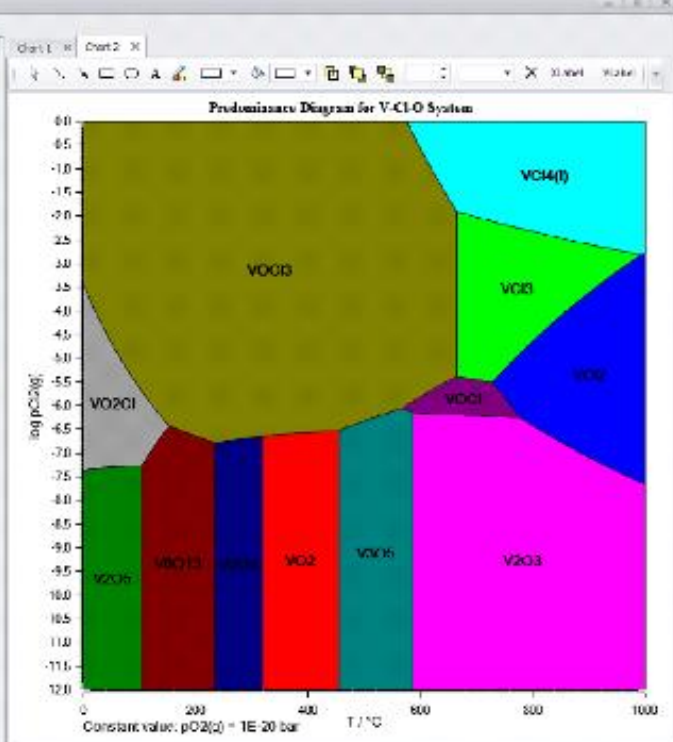
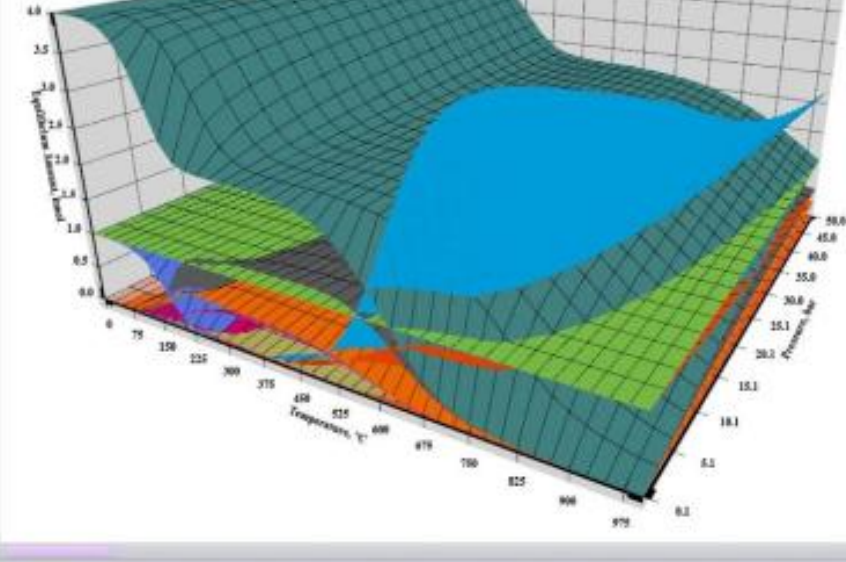
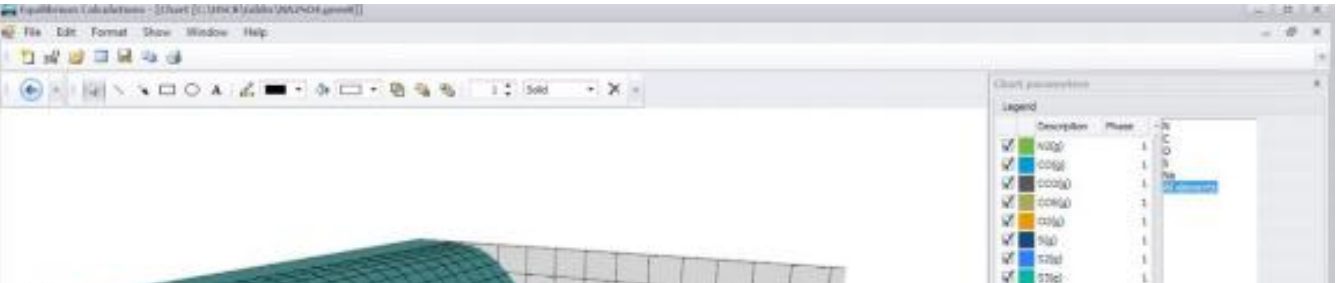
- Development and improvement of various applications using Lotus and Sharepoint, used practically every day by Metso senior management and employees on all 5 continents

2. Outotec Research Center

Over 1500 customers in 76 countries



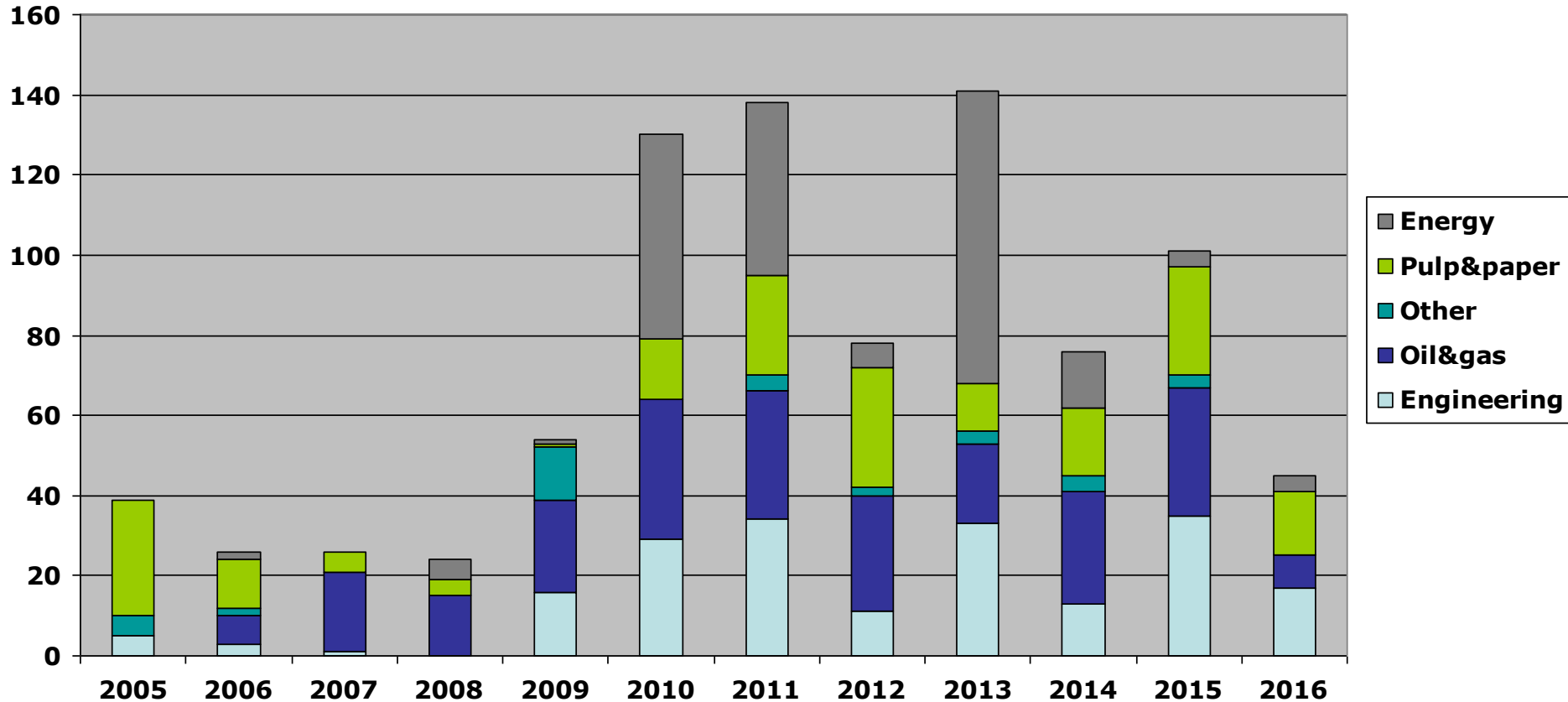
HSC Chemistry



2. Metso / Valmet DNA customer projects

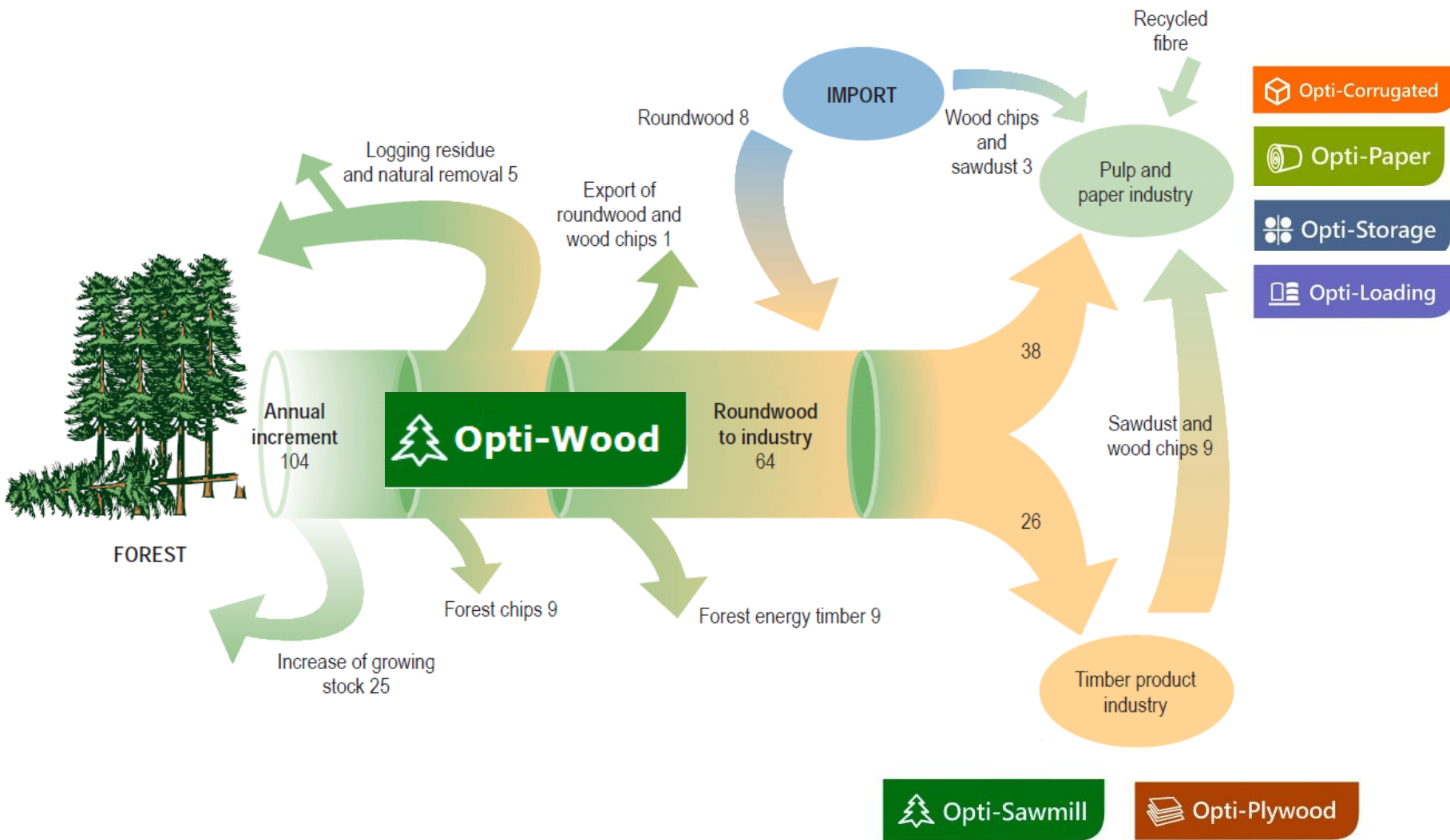
Customer, years	Projects
OJS "Surgutneftegas" (GKS, GTES): 2001-2015	22
OJS "Arkhangelsk PPM": 2002, 2011, 2012	3
OJS "Sibur": 2006, 2012	2
OJS "Segezhsy PPM": 2002, 2008-2009	2
OJS "Kondopoga": 2001, 2004	2
OJS "Belozerny GPK": 2013	1
OJS "Cherepovetskaya GRES": 2011	1
Other	5
TOTAL:	38

3. Metso / Valmet DNA customer training



«Man-courses» by years (total 870+ specialists from 65+ companies)

3. Optimal production planning systems



3.1 «Opti-Wood»



MAIN EFFECTS

- Optimal planning of wood transportation, minimizing **truck fleet** (by 2...6%), **unnecessary mileage** (by 5...7%) and **unnecessary inventory** (by up to 20%)
- Increasing **profit** (by 3...6%) by better sales planning, including fulfilling orders with higher "margin"
- Improved **utilization** of units in the supply chain due to mutual integration
- Reduce the **time** for management decision-making (by 25...50%) due to increased "transparency" of inventory movement and information availability
- More efficient use of enterprise **financial resources** in operations and investments (by 10...15%) by evaluating various strategies using **virtual** and real work centers

3.2 «Opti-Sawmill»

Unique mathematical models, methods and algorithms, combined with modern software development platforms and methodologies, improve **profitability** of the customers:

1. increased share of lumber by 1...2%
2. increased utilization of equipment by 2...3%
3. decrease the volume of in-process inventory



With average monthly production volume 15 000 m3 of lumber, the **economical benefits** amount to **300-400kEuro** annually

«Software company who is very much advanced in production planning for sawmill. In my understanding they are World leader in this area!»
Aleksey Ulybin
Business development director, **Ilim Timber Group**

The screenshot displays the 'Лесосурьев' (Log Skid) window with a table of lumber specifications and a 'РАБОЧИЙ ПЛАН' (Working Plan) window showing a sawmill layout diagram.

Лесосурьев	Сорти	Нач. ост. (м3)	Ожидается (м3)	Всего (м3)	План. объём (м3)	Кон. ост. (м3)
		27 285,8	0,0	27 285,8	14 318,3	12 967,5
Ель 4 м	13 см	4,7	0,0	4,7	0,0	4,7
Ель 4 м	14 см	32,3	0,0	32,3	0,0	32,3
Ель 4 м	15 см	1 195,0	0,0	1 195,0	0,0	0,0
Ель 4 м	16 см	533,0	0,0	533,0	214,3	318,7
Ель 4 м	17 см	207,9	0,0	207,9	136,6	72,0
Ель 4 м	18 см	933,2	0,0	933,2	933,2	0,0

The layout diagram shows a circular sawmill with various cutting zones labeled with dimensions like 92x100-5,4[5,8], 22x150x6,0[6,0], and 50x150x6,0[6,0].

3.3 «Opti-Plywood»

Purpose: raise Customer profit by means of:

- Priority production of more profitable goods ("higher grades")
- Reduction of in-process inventory
- Reduction of orders fulfillment time

Economic benefits

- Increased profit: by 1.5...2%
- Reduced time for management decision-making: by 2...3 times

Main customers

- «Ilim Bratsk Woodworking Plant»

Access

- Web-service: www.opti-soft.ru , section «Opti-Plywood»

Opti-Plywood
Оптимальное планирование производства фанеры

ИЛИМ

Главная Справочники Журналы Отчёты

Шпон

Наименование	Шпон (мм x мм)	Действия
1 сорт	2600 X 1300	Изменить × Удалить
2 сорт	2600 X 1300	Изменить × Удалить
3 сорт	2600 X 1300	Изменить × Удалить
продольный полный формат	2600 X 1300	Изменить × Удалить
продольный ребросклеи	2600 X 1300	Изменить × Удалить
поперечный полный формат	1300 X 2600	Изменить × Удалить
поперечный ребросклеи	1300 X 2600	Изменить × Удалить
поперечный полуформат	1300 X 1300	Изменить × Удалить

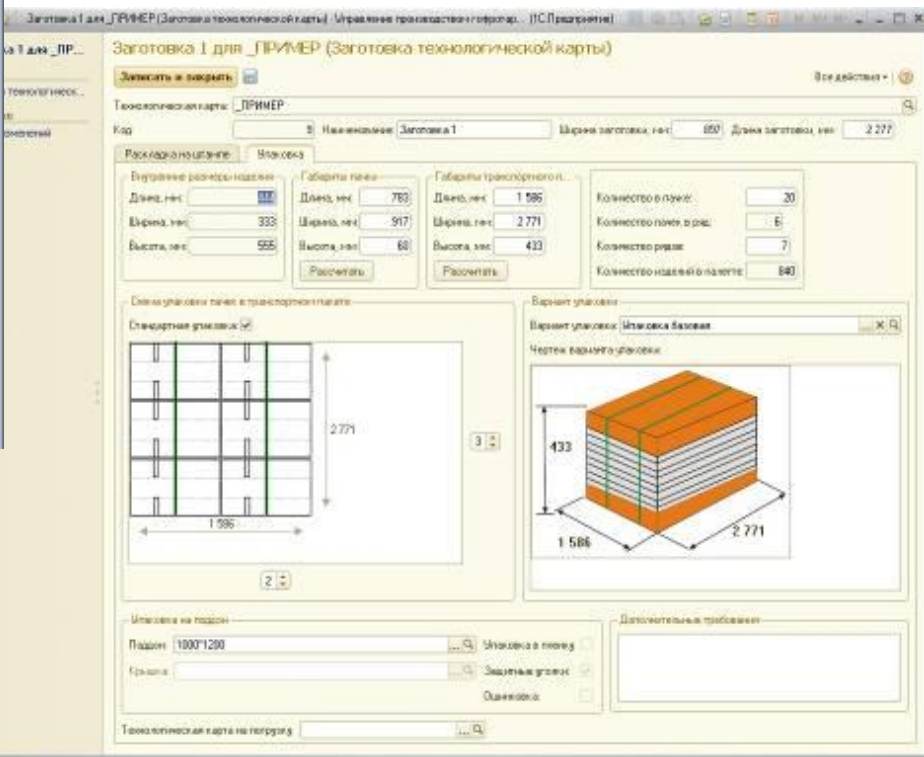
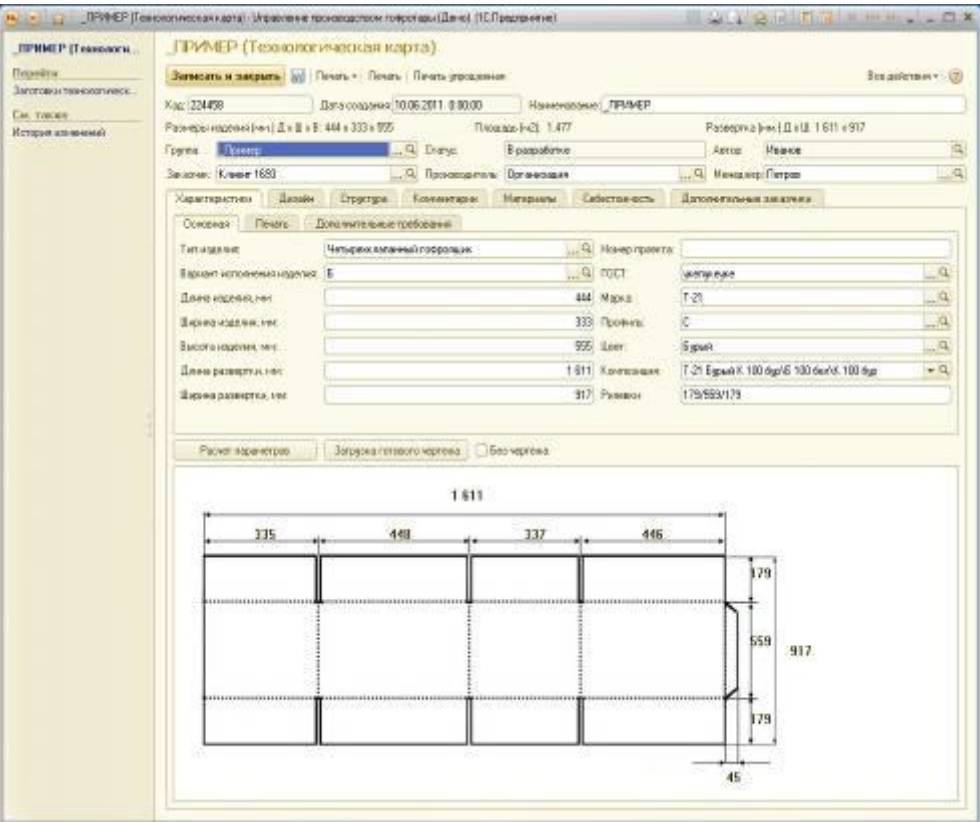
Страница 1 из 1 50 элементов на странице

3.4 "Opti-Corrugated"



30+ customers in Russia and Ukraine

- 1. decreased consumption of materials
- 2. increased utilization factor for equipment
- 3. decreased volume of in-process inventory



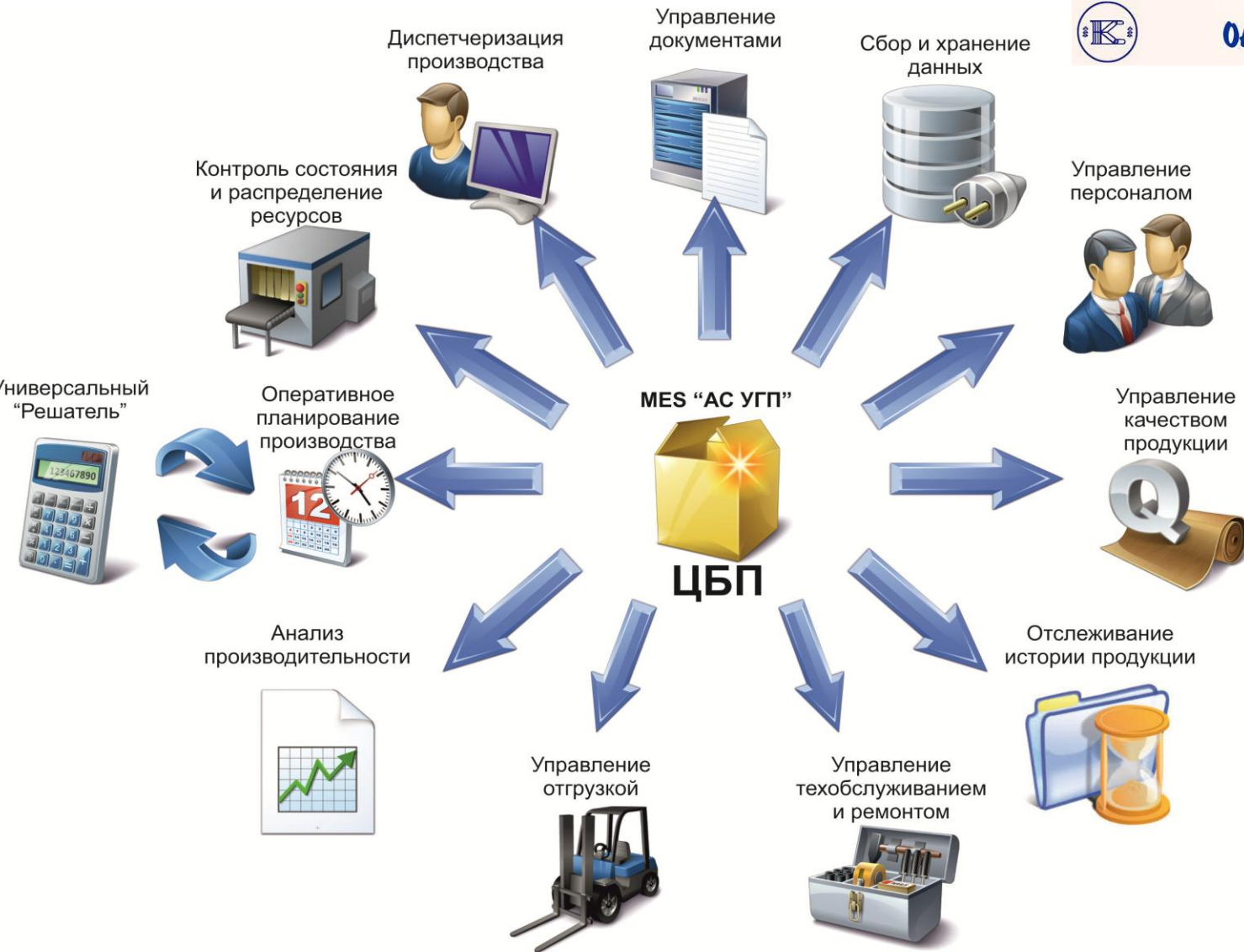
3.5 "Opti-MES" for pulp-and-paper mills



ОАО "КОНДОПОТА"



KARJALA PULP



3.5 "Opti-MES" for pulp-and-paper mills

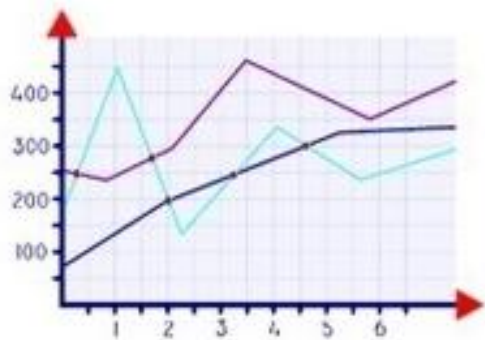
Tasks:

- Eliminate the drawbacks in the existing automation system
- Adding new features
- Migration to a new hardware
- Use of modern development tools and techniques

Scope:

- 7 paper machines
- 9 slitters
- 4 warehouses of finished products
- Operation schedule: around the clock 365 days a year
- The number of paper rolls: up to 5000 / day
- The number of contractors: 7000+
- The number of paper grades: 60+
- The number of generated documents: 11 000+ / month
- The number of users: 200+ people

3.6 «Opti-Paper»



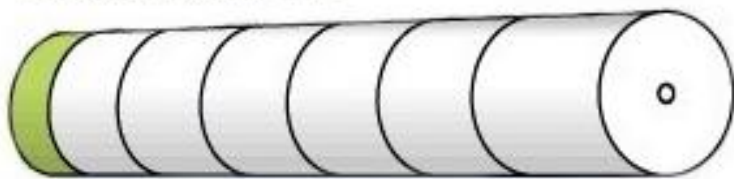
расчет сбалансированных планов производства и отгрузки продукции



расчет оптимальной загрузки оборудования и распределение работ между различными БДМ и КДМ

Экономия до 1-2% материала в виде кромок

оптимальный раскрой тамбура на рулоны



составление отчетной документации



3.7 «Opti-Storage» module

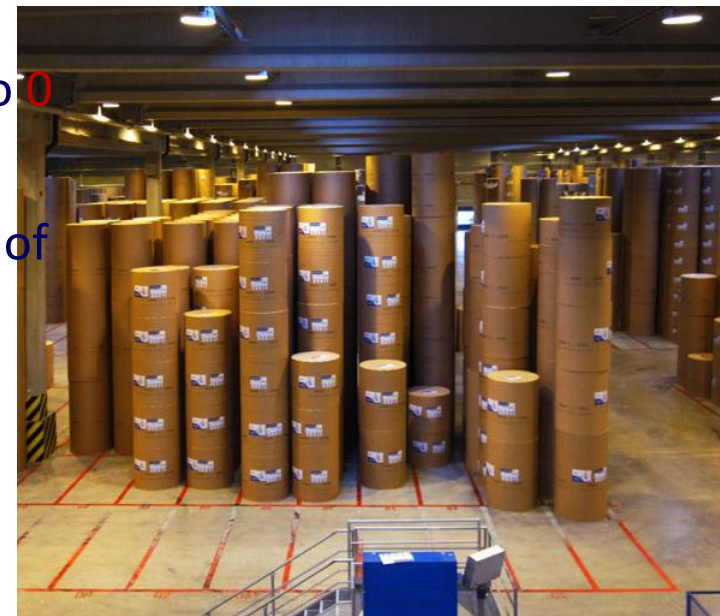
Warehouse optimization of a mill

- + **Practically all** operations in mill's warehouse are planned with the Module
- + Time of loading a transport was decreased by **30%**
- + Reduction of unproductive operations by **2** times
- + Number of non-free cells decreased by **10-12%**
- + Roll misplacements reduced to **0**
- + Rolls defective due to long storage time reduced to **0**
- + Time of warehouse inventory reduced by **5** times
- + Inventory is made 1-2 **times per year**: great saving of the working time for the staff
- + Complete **integration** with ERP, MES and other IT systems of the mill

Opti-Storage



Архангельский
целлюлозно-бумажный
комбинат



3.8 «Opti-Loading»

Optimization of paper goods shipment

- «Cloud» service is used by Mondi mill almost **daily; 10 to 30 non-standard loading schemes** calculated **monthly**
- Loading vehicles from **different warehouses**
- Different types of goods (“**round**” and “**cubic**”), pallets forming
- Transportation costs reduced by 5%



Справка для оптимального планирования погрузки продукции в транспорт

Главная | Справочники | Журналы | Отчеты | Настройки

Остатки

План

Основное

Наименование: План №21186

Дата создания: 12.05.2015 17:24

Состояние: Найдено решение

Сохранить

Рассчитать план

История данных | Результаты

Скачать отчет

Груз						
Наименование	Тип	Размеры	Вес (кг)	План	Загружено	Остаток
А1 138	Рунд	1000x200	1100	24	24	0
			Кол-во	24	24	0
			Вес (кг)	26400	26400	0

Транспорт								
Наименование	Тип	Размеры	Грузоподъемность (кг)	Дополнительное описание общего ИТ-груза в транспорте	Отгрузки	План	Загружено	Остаток
40НС	Ночный	12000x3114x2650	26580	РКД	50x50x50	1	1	0
					Кол-во	1	1	0
					Грузоподъемность (кг)	26580	26580	0

Схема погрузки

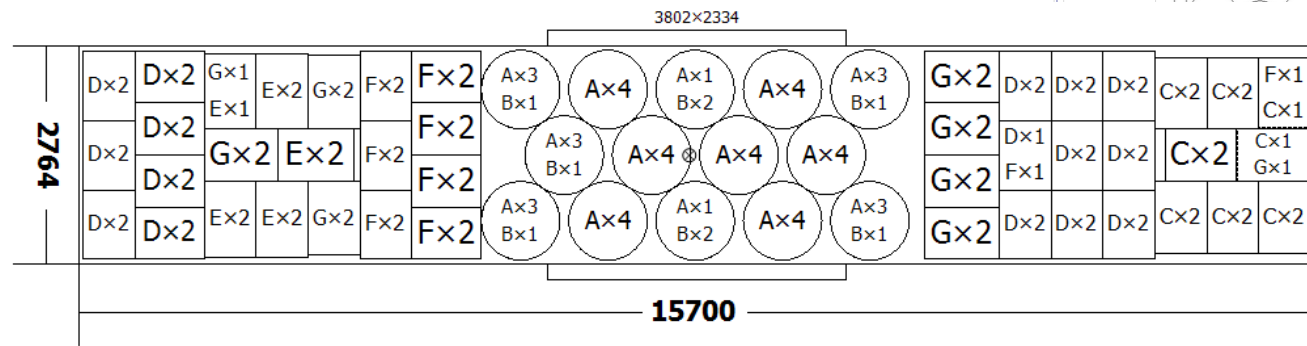
№	Транспорт	Кол-во
1	40НС	1

Схема погрузки №1 в ТС 40НС

Количество контейнеров: 1
Грузоподъемность(кг): 26580

Продукция:
138 (А1) - 24 шт.;
Вес груза(кг): 26400

Специфика:
Продольное описание: Таки (влезет); Поперечное описание: Оси; Допутое продольное описание: 2042мм; Допутое поперечное описание: 230мм;



4. Application types

- Mathematics, algorithms, **optimization**
- **Desktop** applications (using different UI frameworks, etc.)
- **Web** applications (jQuery, Ajax, knockoutJS, underscore.js, MooTools, HTML5; SOAP, ASP.NET, XML, WCF, Web API)
- **Graphical user interface** frameworks
- **Database** applications
- Application **modules** and **libraries**
- **Add-ons** (Excel VSTO, Visual Studio IDE)
- **Mobile** applications

4. Development process and tools

- **Agile development** Scrum with Jira and GreenHopper
- **Subversion** and **Git**
- **Code Analysis** reports: code style, coding guidelines
- **Code coverage** report
- **Performance profiling** with ANTS
- **Project tracking and collaboration**: JIRA+Confluence
- **Quality** assurance, automated **unit-testing** (MStest, Nunit + Moq, Rhino Mock, Jasmine for JavaScript)
- **Visual Studio IDE** (Nuget, Ankh)
- **Source control system (SVN)**: tagging, branches, SVN properties
- **Continuous integration** with Jenkins:
 - Automatic build on commit (unit testing; code analysis; latest stable component build; automatic deployment to test server)
 - Integration build on schedule or command (build the whole developer version of Info server; automatic deployment to test server)
 - Stable build on command (the whole system from stable SVN tags)

4. Main competences

- **Advanced** optimization algorithms of **own** development
- **Advanced** development platforms, approaches, **tools**: code analysis, performance monitoring, automated testing, design patterns, integration, stable builds, Scrum, Object-Oriented paradigm
- Studying the Customer processes to **every detail**
- **Completed** systems delivered to industrial users
- **Joint teams** of permanent developers, researchers, and students
- **Various** development environments, and programming languages (.NET, C++, Python, Java, PHP, Javascript, Qt, etc.)
- **Medals** of various exhibitions and contests (2 gold, 5 silver, 4 diplomas)
- **Patents**: 11, and counting

Patents and awards



12 patents on software systems
 6 diplomas and 4 medals of Russian and regional contests

