



OSD Software for wood processing companies

Professional programs in ERP/PPC + CAD/CAM

Production
planning

Office
organization

Material
management

Time data
management

CAD

Carcase
generator

CAD/CAM



OS Datensysteme GmbH

Software power for wood processing companies



OS Datensysteme GmbH

OSD Software for wood processing companies

Professional software power for wood processing companies

Do you want to optimize the operations in your company? Easy with software power from OS Datensysteme.

The versatile OSD product spectrum/portfolio offers completely interlinked solutions. We provide suitable software for your business in

- ERP (Enterprise Resource Planning)
- PPC (Production Planning and Controlling)
- CAD/CAM technology

OSD is the German market leader. With over 30 years of experience we know the requirements of wood processing companies.

We offer IT solutions for

- Cabinet makers
- Millworkers
- Production companies
- Interior designers
- Kitchen manufacturers
- Exhibition booth builder/manufacturer
- Shop fitting builder/manufacturer
- Joiners

Our 4,000 customers especially appreciate the unique integration of our complete solutions in the areas of ERP/PPC and CAD/CAM technology. By combination of several OSD programs you achieve unique synergies in your company.

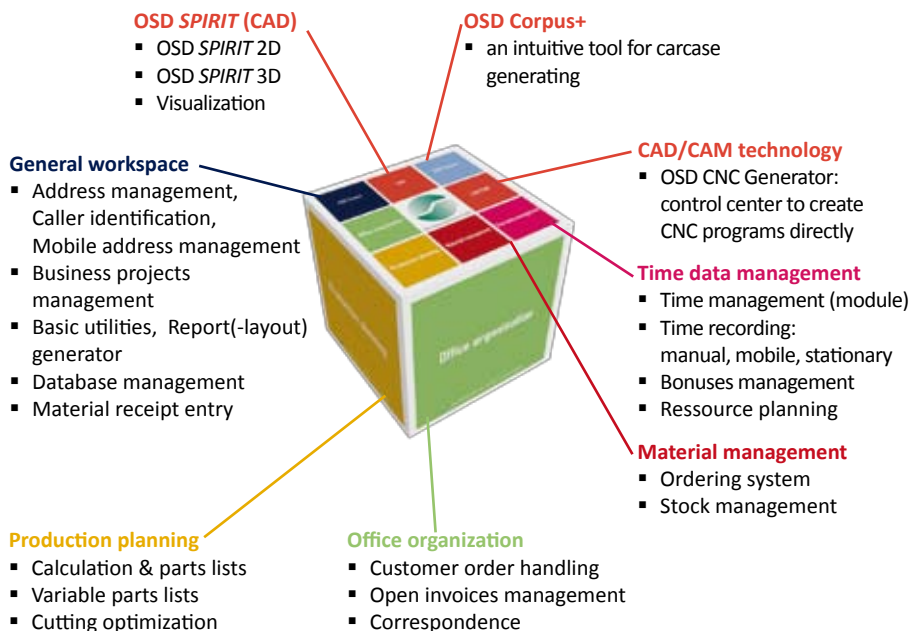


Overview

Product name:

**“OSD Branchenprogramm“
(ERP/PPC) and OSD CAD/CAM
technology**

The individual combination of the OSD programs (modules) in the areas of ERP/PPC with CAD/CAM causes a unique continuity in terms of the data flow in your company. You achieve tremendous rationalization effects. Extensive import and export functionality is self-evident.



Workspaces

ERP/PPC

General workspace

Production planning

Office organization

Time data management

Material management

CAD/CAM technology

OSD SPIRIT (CAD)

OSD Corpus+

OSD CNC Generator

ERP/PPC

Enterprise resource planning/Production planning and control



Professional software power for wood processing companies

General workspace

The general workspace includes the basic modules. The basic programs function comprehensively across the modules and are included as a basis of the "OSD Branchenprogramm". The associated modules are:

- Address management, Caller identification, Mobile address management
- Business projects management
- Basic utilities, Report (-layout) generator
- Database management
- Material receipt entry

Production planning

Calculation & parts lists: With this software solution you can enter your parts lists manually and optimize the calculation of your estimate/quotation. You work quickly and with exact costs. By using OSD Corpus+ parts lists will be created automatically.

Variable parts lists: It is a supplementary module to OSD Calculation & parts lists. It allows you to create detailed parts lists very quickly and save them as templates.

Cutting optimization: By using the OSD Cutting optimization you get an exact overview on the material requirement for one or more projects. This optimizes your stock and reduces waste. Expensive re-orders are not necessary due to exact material estimates.

Office organization

Customer order handling: This module is a central element during daily administrative tasks in the office. The main functions of this module support the following tasks: estimate/quotation, order confirmations, delivery notes (packing slips), invoices (incl. partial and final invoices), down payment invoices, service bills, invoice corrections (credit notes) and bank transfers. Direct debiting procedures (debit notes) are also possible but need to be clarified with your bank. You have also the possibility to create your own documents needed for your business operation.

Open invoices management: With this module you keep transparency of open invoices at every time. Invoices that were created using the OSD Customer order handling (debtors) are automatically passed on to the Open invoices management. Payment terms will be considered. Payment receipts are posted; payment monitoring and reminders are created automatically.

Correspondence: With this module you are able to write the daily correspondence quickly and efficiently. It has similar functions like those from MS Word. The advantage of the OSD Correspondence compared with other word processors is the direct linking to the OSD modules Address management and Business projects management.



Mobile address management (MAM)

ERP/PPC

Enterprise resource planning/Production planning and control



Professional software power for wood processing companies

Material management

Ordering system: With this software module you will achieve efficient order processing and order monitoring. The challenge is to keep stock levels low through an effective ordering management. Even material price requests can be sent to the suppliers. Deadlines are punctually reminded if necessary.

Stock management: The program calculates your inventory. It gives an overview of your inbound to or outbound from inventory entries and determines the current stock level. Cancellations and reservations are also possible.

Time data management

This part is the interaction of different OSD modules to help you in terms of recording, management and analysis of your tracked hours. Depending on operational requirements these methods of recording can be combined in various ways:

Time management (module) - the central element of Time data management. All the information is collected and prepared in this software. Analyzes, evaluations, statistics and wage data are only some of the information that can be individually created.

Time recording:

Manual time recording: The employee writes down his activities manually on a timesheet. Subsequently the data is entered manually in the module Time management.

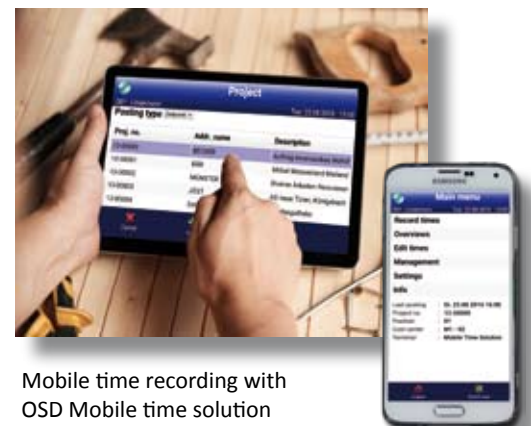
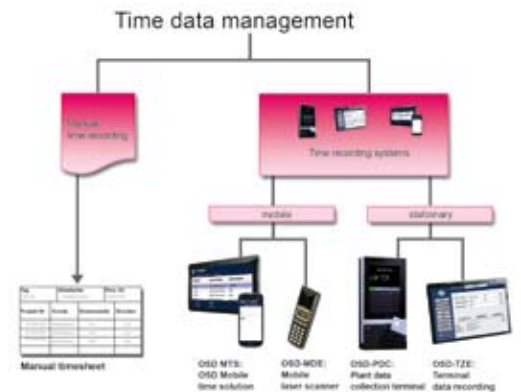
Mobile time recording: With smartphone, tablet or a special mobile (barcode) scanner

Stationary time recording: PDC (plant data collection) terminals or a terminal data recording per touch screen for example

Bonuses management: Based on similar structures of the production run in the company it is possible to determine prorated bonuses for employees. You can decide whether the bonuses are paid out or converted into time credits.

Resource planning: Maximum possible workloads and expensive production procedures are forcing more companies to look toward more efficient planning of operations. The OSD Resource planning replaces the often existing planning board completely, takes little time and always keeps manufacturing capacity transparent and visualized.

Interfaces to third party programs for payroll purposes (wage and salary) and financial accounting programs.



Mobile time recording with OSD Mobile time solution



Stationary time recording: PDC or terminal data recording per touch screen

CAD/CAM technology CAD system



Professional software power for wood processing companies



Office designed with OSD *SPIRIT* 3D, visualization with OSD *visualPRO*, freehand drawing with program Skribbel

OSD CAD/CAM technology

The OSD CAD/CAM technology includes several software solutions in CAD, carcase generating and CNC program generating.

CAD system

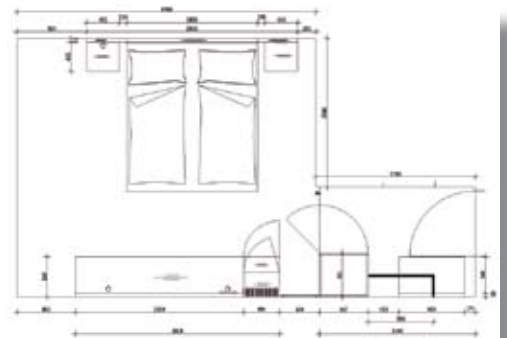
OSD *SPIRIT*: OSD *SPIRIT* is the CAD system of the future. All the tasks of planning and presentation are at peak efficiency. As part of the OSD CAD/CAM technology OSD *SPIRIT* provides the close integration of CAD/CAM to ERP/PPC. Two versions are available - **OSD *SPIRIT* 2D and OSD *SPIRIT* 3D**

OSD *SPIRIT* 2D: The ideal 2D CAD tool. You want to enter the world of CAD or you generally want to draw professional floor plans, elevations etc. With OSD *SPIRIT* 2D you use a compilation of tools (modular systems, character styles) according to your needs. You fulfill all tasks in the 2D area professionally. Of course you can always upgrade to the 3D version. Thus you protect your investment in the long run.

OSD *SPIRIT* 3D: Meets all the requirements of a CAD software. The individual design of 3D projects with OSD *SPIRIT* 3D gives your customers a realistic and professional impression. The decision-making of your customers is positively supported. OSD *SPIRIT* 3D meets all the requirements expected from a CAD solution. All possible combinations with the software solutions of the areas OSD CAD/CAM and OSD ERP/PPC are available, also the combination with optional programs for visualization, freehand drawing etc.



Bathroom designed with OSD *SPIRIT* 2D



Hotelroom designed with OSD *SPIRIT* 2D



Bathroom designed with OSD *SPIRIT* 3D, visualization with OSD *visualPRO*



Living area designed with OSD *SPIRIT* 3D, visualization with OSD *visualPRO*

CAD/CAM technology

OSD CNC Generator and carcass generating

Professional software power for wood processing companies



Room with attic/knee-wall cabinets generated by OSD Corpus+, visualization with OSD *visualPRO*

OSD Corpus+: an intuitive tool for carcass generating

With OSD Corpus+ you create quick and easy 3D furnitures by entering parameters. The input of data in the carcass generator is simplified by graphical representations in a 3D viewer window. With this type of construction all required CNC programs and complete parts lists with supplier-independent hardware, sheet goods, edges and surfaces can automatically be generated. The time-consuming and manual parts list creation is now no longer needed. Also errors made by manual entering parts are avoided.

For the application itself no CAD skills are necessary. OSD Corpus+ is directly connected to the “OSD Branchenprogramm” (same database). This means: all the entered materials/hardware can be used further on.

OSD CNC Generator: control center to create CNC programs directly

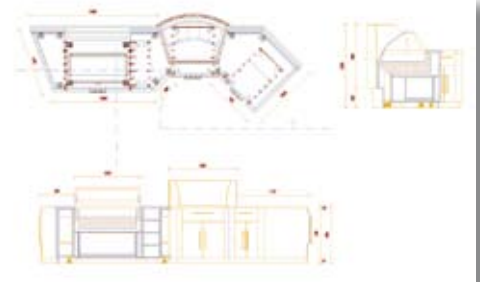
Using the OSD CNC Generator, CNC programs for all standard machines and WOP systems can be created automatically analyzing the 3D design data.

If required, programs might be generated for multiple machines simultaneously. This gives you the opportunity to choose for which machine(s) programs are created based on their workload. The CNC programs generated by OSD CNC Generator can be used directly on the machine with no further modification or post processing.

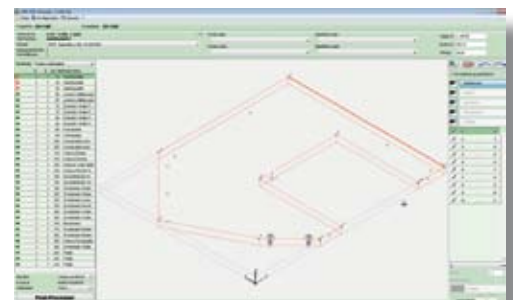


OSD Corpus+

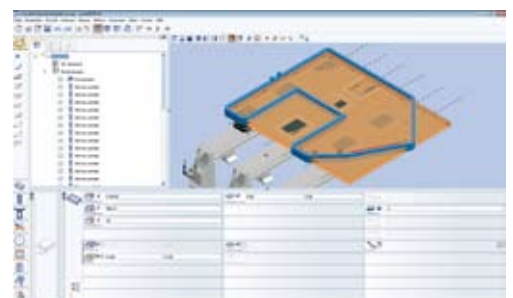
OSD CNC Generator



Counter design



Component in the OSD CNC Generator

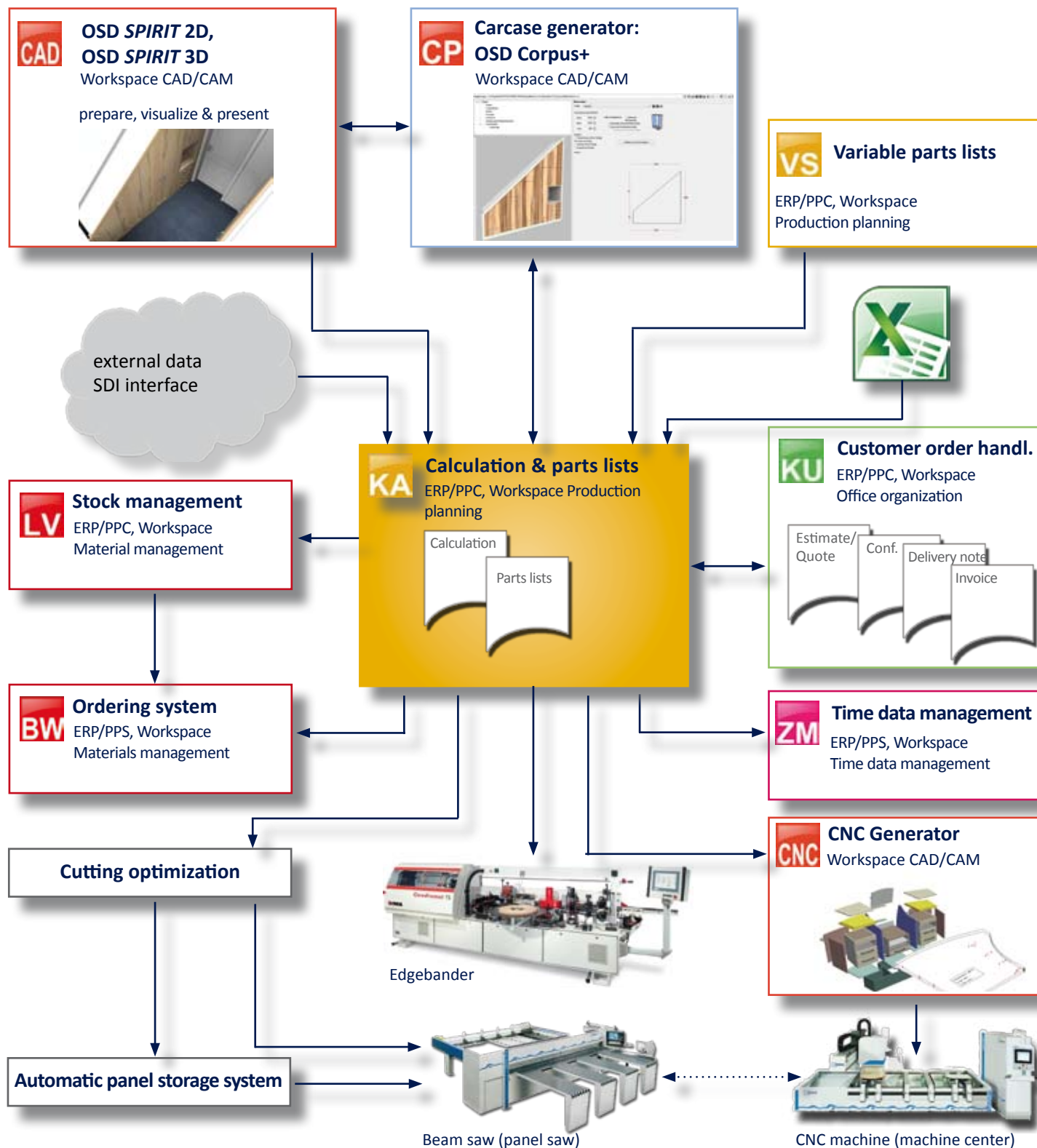


Component in the postprocessor, e. g. WoodWOP



OSD Software solutions: Production data flow

Professional software power for wood processing companies





CAD/CAM technology in practice

Professional software power for wood processing companies

Generating a CNC program: Interaction of OSD CAD/CAM modules





OSD Software products

Professional software power for wood processing companies

OSD Product range

Suitable software components for wood processing companies

OSD software is modular; thus it allows a tailored implementation in your company. The "OSD Branchenprogramm" therefore, is suitable for all enterprise sizes.

Telephone support and remote maintenance (online) are an essential part of our service. Our customers are supported by qualified OSD staff members which are experienced in each sector of the trades.

General workspace



Address management
Caller identification
Business projects management

Office organization



Customer order handling
Open invoices management
Correspondence

Production planning



Calculation & parts lists
Variable parts lists
Cutting optimization

Material management



Ordering system
Stock management

Time data management



Time management (module)
Bonuses management
Resource planning

Carcase generating



OSD Corpus+
an intuitive tool for carcase
generating

CAD/CAM technology



OSD SPIRIT 2D, 3D (CAD)
OSD visualPRO
OSD CNC Generator



Contact

Interested? Please do not hesitate to contact us.

For further informations please do not hesitate to contact us by phone, fax or e-mail.

OS Datensysteme GmbH
Am Erlengraben 5
76275 Ettlingen
Germany
Phone +49 (0) 7243 509 0
Fax +49 (0) 7243 509 200
info@osd.de
www.osd.de



OS Datensysteme GmbH

Software power for wood processing companies

Am Erlengraben 5
76275 Ettlingen
Germany

Phone: +49 (0) 7243 509-0
Fax: +49 (0) 7243 509-200

E-mail: info@osd.de
Internet: www.osd.de

Registergericht Mannheim
HRB 360897



05-2017