

# 01

## FEEDERS

---

- CHAIN-PLATE FEEDERS – TTK.230 / TTK.350
- VIBRATING FEEDERS
- CHAIN-PLATE FEEDERS – TTK.180
- TCG
- LCG
- VTG
- VFG





• PB • PALLET BLOCKS • PELLETS • WASTE • LIME



## FEEDERS FOR BULKY MATERIALS

### CHAIN-PLATE FEEDERS – TKK.230 / TKK.350

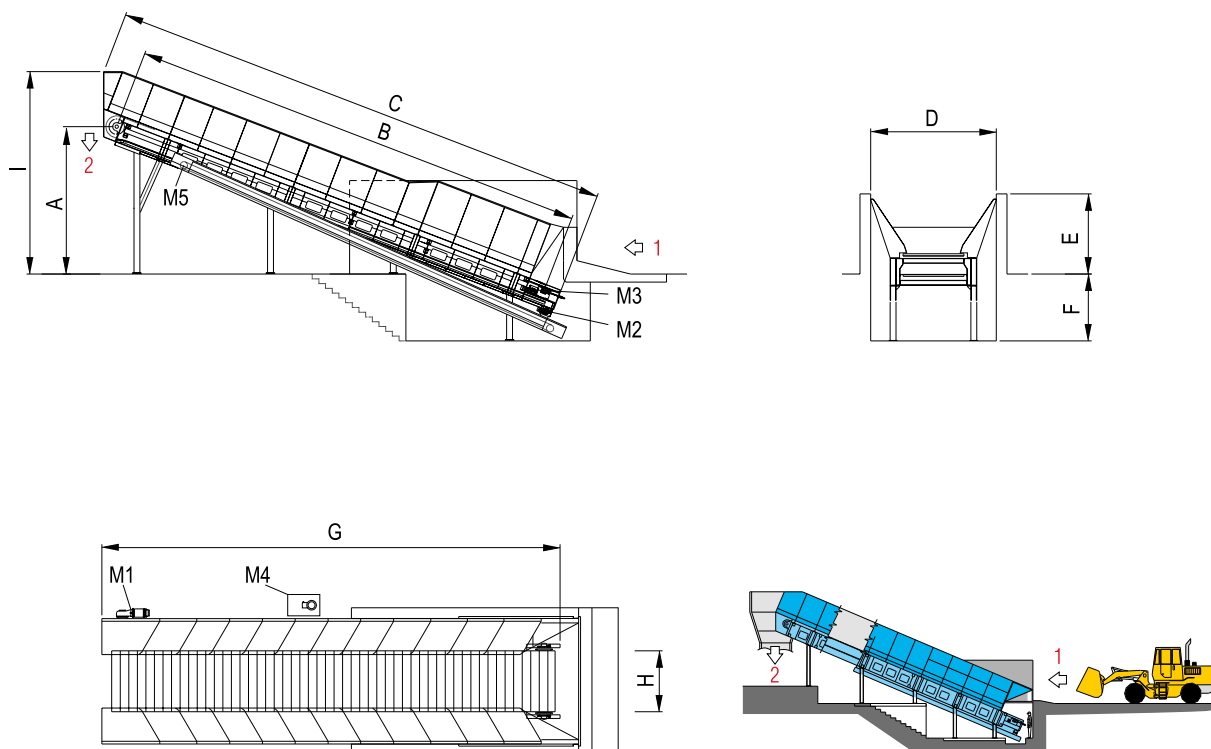
FOR URBAN FOREST MATERIAL

#### TECHNICAL FEATURES

• Very strong double-roller chain feeder • Moving bed equipped with transverse metal plates, overlapped and sealed by profiled shape • Front shaft fitted with direct transmission • Rear shaft fitted with chain tensioning devices • Self cleaning system with: closed bottom – rear reclaim screw conveyors – reclaim belt conveyor • Automatic lubrication device for chains • High containment walls.

#### BENEFITS

• Easy loading of urban forest material, such as pallets, crates, cable drums, construction material, demolition furniture, recycled particleboards, etc., bulky or pre-crushed • Very efficient feeding of pre-crushers (Alligator) or Crushers (Tiger) • Except for front loader or crane, operators are required from time to time only • Working speed freely adjustable by using frequency converter • Automatic cleaning and lubrication • High performance • Low maintenance cost.



1 = FEEDING  
2 = DISCHARGE

M1 = DOUBLE CHAIN  
PLATE-FEEDER

M2 = CLEANING SCREW  
M3 = CLEANING SCREW

M4 = LUBRICATION DEVICE  
M5 = CLEANING BELT

MODEL	OVERALL DIMENSIONS mm								
	A	B	C	D	E	F	G	H	I
<b>TKK.230/1200</b>	5515	12000	14167	4700	3000	1000	14832	2000	7575
<b>TKK.230/1700</b>	5515	17125	18914	4700	3000	2500	17140	2280	7575
<b>TKK.350/1200</b>	4315	12125	13760	5800	3000	500	13215	3500	7735
<b>TKK.350/1700</b>	4315	17125	18760	5800	3000	2400	17815	3500	7735

MODEL	CAPACITY* BULK m <sup>3</sup> /h	INSTALLED POWER kW					WEIGHT APPROX. kg
		M1*	M2	M3	M4	M5**	
<b>TKK.230/1200</b>	200-230	5,5	0,55	0,55	0,12	2,2	22000
<b>TKK.230/1700</b>	200-230	5,5	0,55	0,55	0,12	2,2	27000
<b>TKK.350/1200</b>	300	5,5-15	0,55	0,55	0,25	2,2	35000
<b>TKK.350/1700</b>	300-350	5,5-15	0,55	0,55	0,25	3,0	44000

\*According to feeding material \*\*Reclaim belt for self cleaning system as option





• MDF • PB • OSB • INS. BOARD • PALLET BLOCKS • PELLETS



## VIBRATING FEEDERS

### VIBRATING SCREENS – EVA

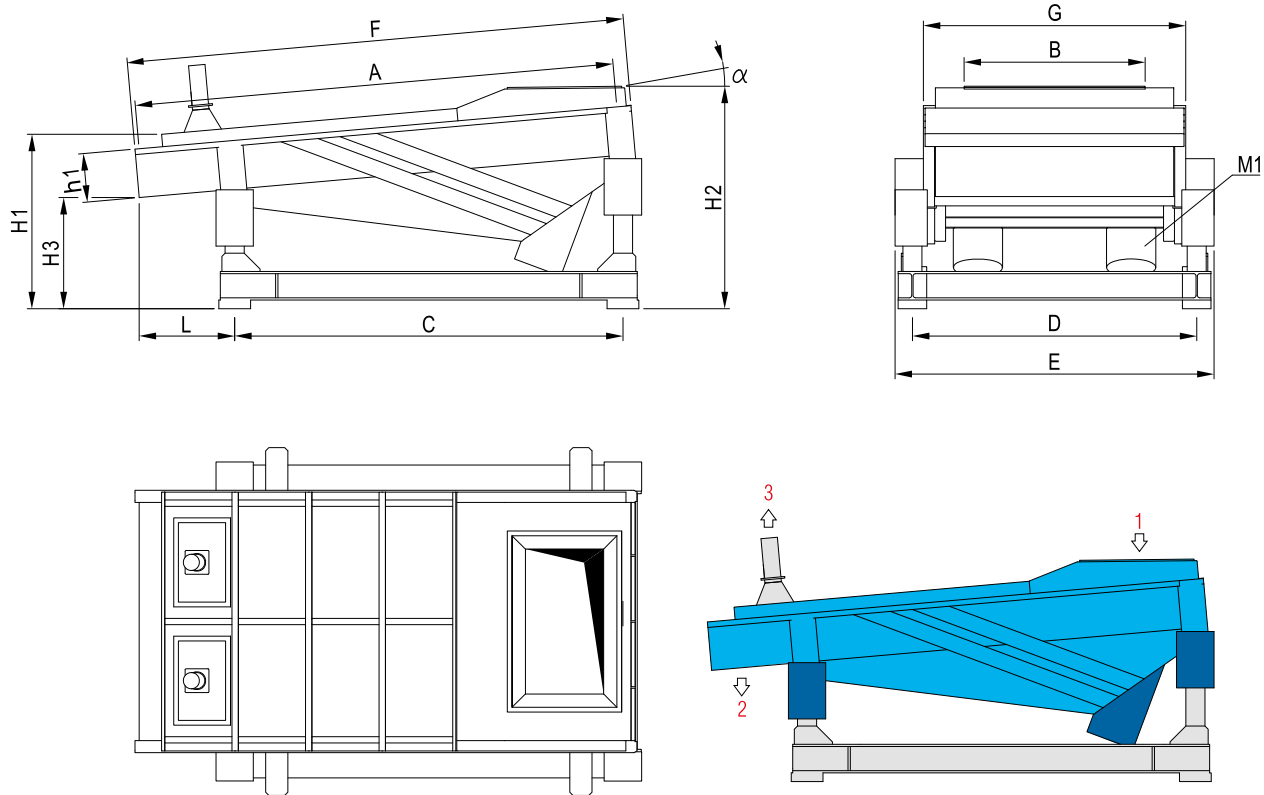
VIBRATING FEEDERS FOR SINGLE MACHINE

#### TECHNICAL FEATURES

- Box made of quality carbon steel • Wear-resistant plates welded onto the sliding-surface of the feeder • Electric vibrators • Elastic spring-supports or rubber puffers • Possibility of a positive inclination up to 10° for fine and/or very wet materials, i.e. wood-saw-dust, fine chips, etc.

#### BENEFITS

- High performance • Excellent feeding and fluidizing of any type of raw wood • Minimized energy consumption • Minimized labour cost • Low maintenance cost.



1 = FEEDING  
2 = DISCHARGE

3 = SUCTION (OPTION)  
M1 = MAIN MOTOR

MODEL	OVERALL DIMENSIONS mm											
	A	B	C	D	E	F	G	H1	H1	H2	H3	L
EVA.60/18	1800	600	1400	876	1150	1960	736	200	960	~1300	~763	492
EVA.90/20	2055	900	1400	900	1430	2220	1000	200	912	~1297	~715	744
EVA.90/25	2500	900	2200	1190	1430	2585	1052	256	986	~1496	~655	270
EVA.120/25	2500	1200	1700	1670	2000	2675	1336	300	936	~1400	~641	886
EVA.140/25	2500	1400	1700	1680	1992	2660	1540	300	938	~1400	~643	886
EVA.150/30	3000	1500	2445	1780	2010	3135	1652	306	1140	~1400	~700	601
EVA.180/30	3000	1800	2420	2090	2325	3135	1952	386	1140	~1770	~805	595
EVA.200/30	3000	2000	2390	2370	2565	3160	2230	386	1170	~1740	~787	720

MODEL	CAPACITY BULK m³/h	INSTALLED POWER kW	WEIGHT APPROX. kg
		M1	
EVA.60/18	According to type of material	2 x 0,68	340
EVA.90/20		2 x 0,90	600
EVA.90/25		2 x 1,00	720
EVA.120/25		2 x 1,50	900
EVA.140/25		2 x 1,50	1820
EVA.150/30		2 x 1,50	1000
EVA.180/30		2 x 1,96	2400
EVA.200/30		2 x 3,20	3300



• MDF • PB • OSB • INS. BOARD • PALLET BLOCKS • PELLETS



## FEEDERS FOR BULKY MATERIALS

### **CHAIN-PLATE FEEDERS – TKK.180**

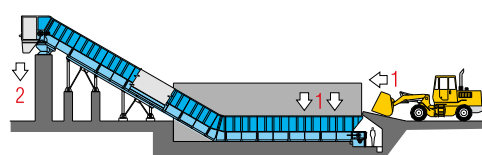
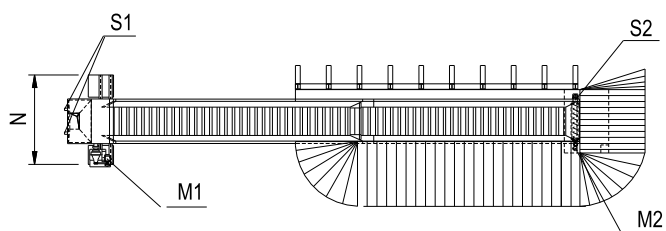
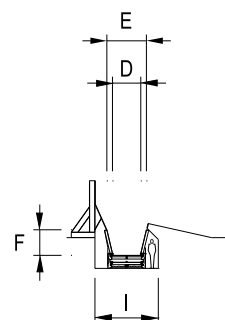
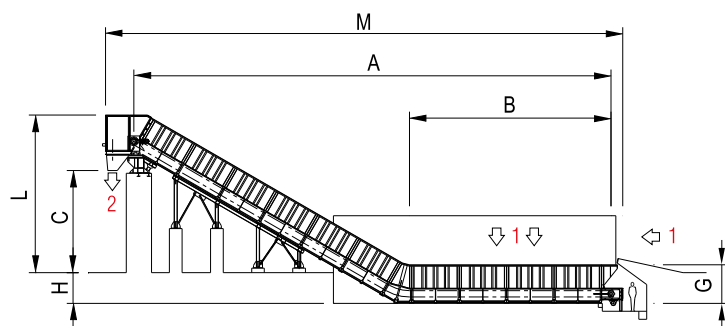
FOR FRACTIONED MATERIAL

#### **TECHNICAL FEATURES**

• Very strong double-roller chain feeder • Horizontal loading section connected with inclined lifting section • Moving bed equipped with transverse metal plates, overlapped and sealed by profiled shape • Front shaft fitted with direct transmission • Rear shaft fitted with chain tensioning devices • Self cleaning system with: closed bottom – rear reclaim screw conveyors – suction system or reclaim vertical screw conveyor • Automatic lubrication device for chains • Containment walls.

#### **BENEFITS**

• Easy loading of fractioned material, wet or dry, such as fresh or recycled chips, sawdust, shavings, etc. • Very efficient feeding of screens, cleaners, refiners, etc. • Except for front loader, operators are required from time to time only • Working speed freely adjustable by using frequency converter • Automatic cleaning and lubrication • High performance.



1 = FEEDING  
2 = DISCHARGE

M1 = MAIN MOTOR  
M2 = REAR CLEANING SCREW

MODEL	OVERALL DIMENSIONS mm											
	A	B	C	D	E	F	G	H	I	L	M	N
TKK.180/3200-LOW	30560	16460	4950	1790	2510	1580	2450	1940	4000	8450	33280	5850
TKK.180/3200-HIGH	30160	13280	6450	1790	2510	1580	2450	1940	4000	9950	32690	5850

MODEL	FEEDING CAPACITY* BULK m <sup>3</sup> /h	STORAGE CAPACITY BULK m <sup>3</sup> /h		INSTALLED POWER kW		WEIGHT APPROX. kg
		CHIPS	SAWDUST	M1*	M2	
TKK.180/3200-LOW	200	80 -100	80 -100	11-15	2,2	50000
TKK.180/3200-HIGH	200	70 - 80	70 - 80	11-15	2,2	50000

\*According to feeding material

MODEL	AUXILIARY SUCTION S1			AIR SUCTION for PNEUMATIC CLEANING S2		
	SUCTION m <sup>3</sup> /h	AIR SPEED m/s	SUCTION PRESSURE Pa	SUCTION m <sup>3</sup> /h	AIR SPEED m/s	SUCTION PRESSURE Pa
TKK.180/3200-LOW	4000	29	200	2000	29	200
TKK.180/3200-HIGH						





• MDF • PB • OSB/LSB • PALLET BLOCKS • PRESSED PALLETS • PELLETS • BIOMASS ENERGY



## FEEDERS

### CHAIN CONVEYORS – TCG

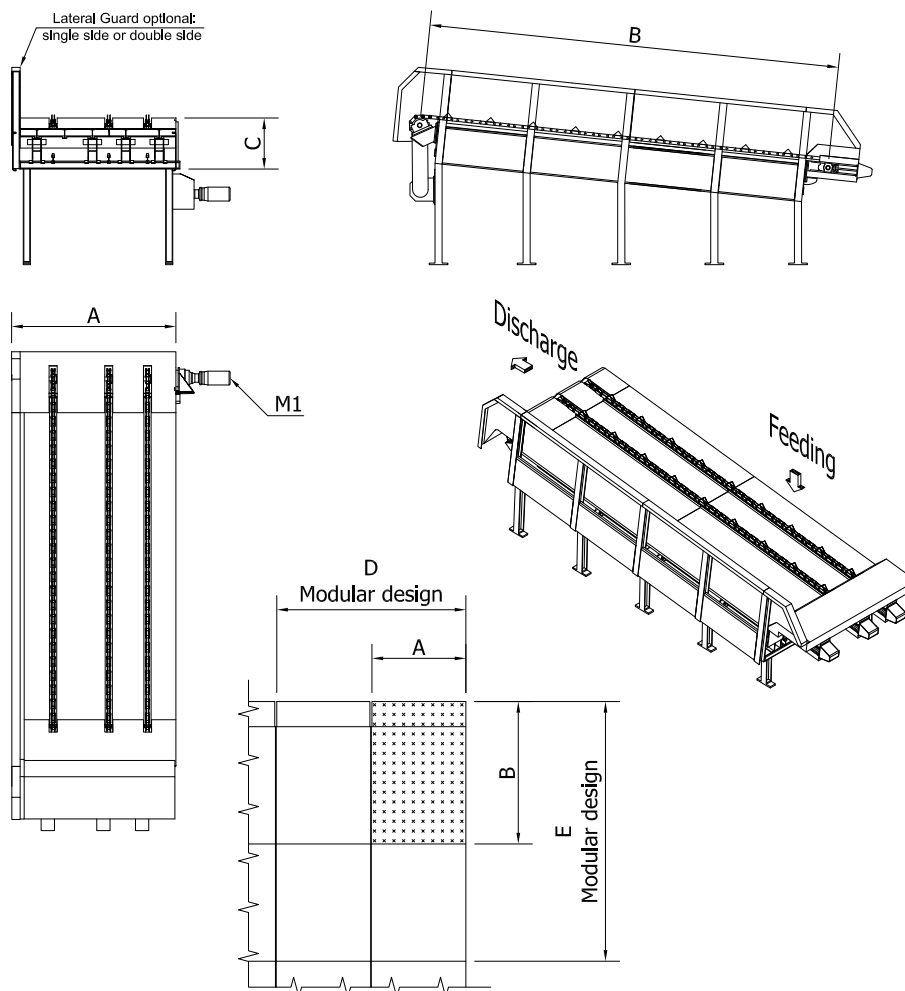
#### TECHNICAL FEATURES

• Chain conveyor for wood logs or slabs feeding • Manufacturing program for different length, width, number of chains, speed, capacity • Modular design in order to extend sizes of the conveyor once needed • Independent tensioning system for each individual chains.

#### BENEFITS

• Excellent regularity feeding of any type of raw wood • Great storage volume • Adjustable speed by frequency converter • Fast assembling timing without weldings on site • Rollers chain to decrease energy consumption and wear • Low maintenance cost.





MODEL	OVERALL DIMENSIONS mm ***					
	A	B	C	D	E	N° chains
TCG**	1000 ÷ 2000	2500 ÷ 4000	1200	A x n°Module	B x n°Module	2 ÷ 12

MODEL	CAPACITY*** m³/h	POWER kW	WEIGHT (kg)
		M1	
TCG**	***	3 ÷ 30	***

\*\*\*According to customer needs

\*\*According to dimensions



• MDF • PB • OSB/LSB • PALLET BLOCKS • PRESSED PALLETS • PELLETS • BIOMASS ENERGY



## FEEDERS

### LONGITUDINAL CHAIN CONVEYOR – LCG

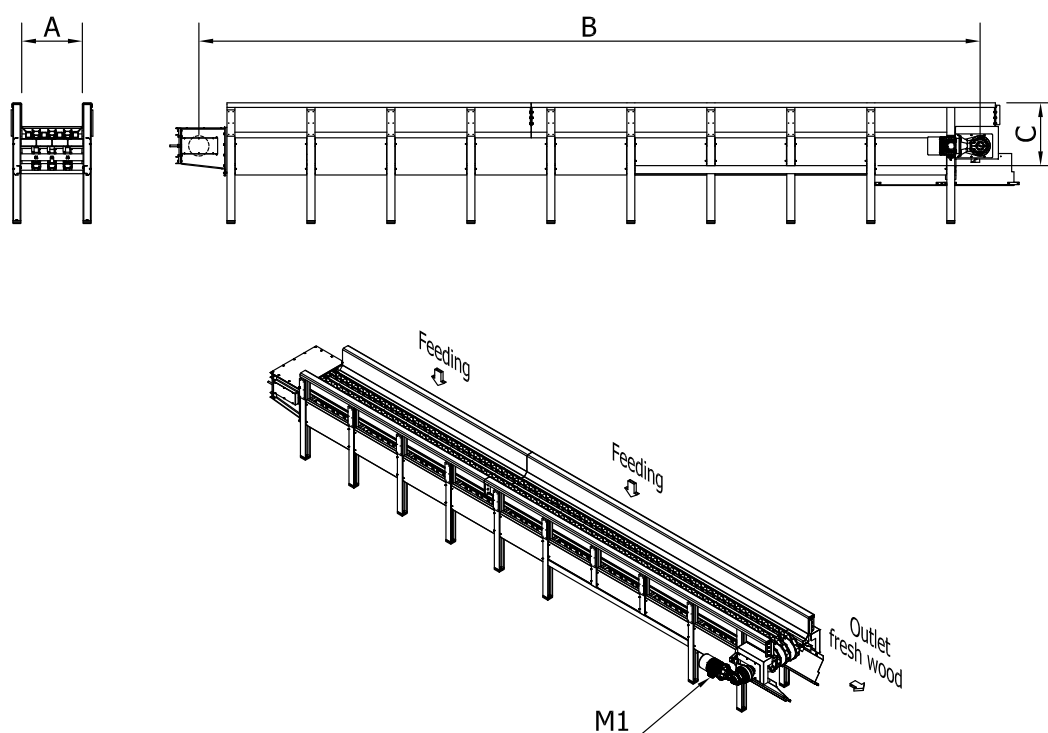
#### TECHNICAL FEATURES

- Chain conveyor for wood logs feeding • Manufacturing program for different length, width, number of chains, speed, capacity • Heavy construction in order to absorb shocks deriving from logs fall into the conveyor • Chains designed with scraper on the bottom side for rails cleaning.

#### BENEFITS

- Excellent regularity feeding of raw wood • Great storage volume • Adjustable speed by frequency converter • Fast assembling timing without weldings on site • Rollers chain to decrease energy consumption and wear • Low maintenance cost.





MODEL	OVERALL DIMENSIONS mm ***			
	A	B	C	N° chains
LCG **	800 ÷ 1600	6000 ÷ 24000	1150 ÷ 1650	2 ÷ 6

MODEL	CAPACITY*** m <sup>3</sup> /h	POWER kW	WEIGHT (kg)
		M1	
LCG **	***	5 ÷ 40	***

\*\*\*According to customer needs

\*\*According to dimensions



• MDF • PB • PALLET BLOCKS • PRESSED PALLETS • PELLETS • BIOMASS ENERGY



## FEEDERS

### VIBRATING TABLES – VTG

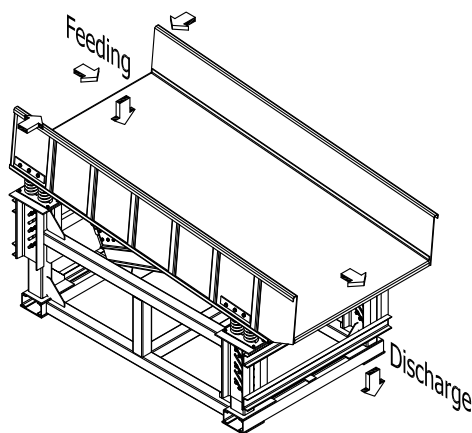
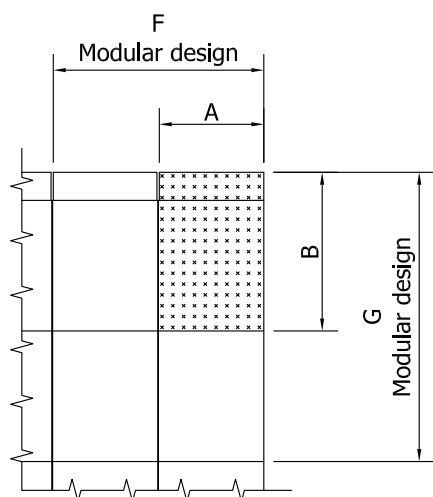
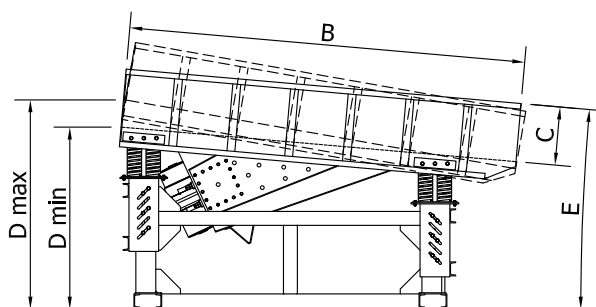
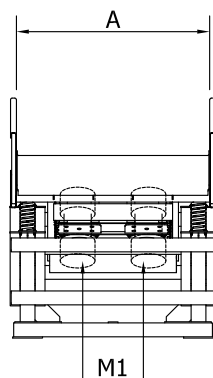
#### TECHNICAL FEATURES

• Vibrating table is the perfect integration with the following vibrating feeder machines, for a proper wood materials feeding • Modular manufacturing system to feed every single specific requirement • Each module could be equipped with a frontal screen for discharging fine materials such as bark, stone, dust etc • The unidirectional movement is obtained through a couple of motovibrators.

#### BENEFITS

• Excellent feeding and fluidification of any type of raw wood • Minimized energy consumption • Low maintenance cost.





MODEL	OVERALL DIMENSIONS mm***						
	A	B	C	D	E	F	G
VTG**	2000 ÷ 4000	4000 ÷ 4500	500 ÷ 600	1750 ÷ 2000	0° ÷ 10°	A x n°Module	B x n°Module

MODEL	CAPACITY m³/h	POWER kW	WEIGHT kg
		M1	
VTG**	***	7,5 ÷ 15	***

\*\*\*According to customer needs

\*\*According to dimensions



• MDF • PB • PALLET BLOCKS • PRESSED PALLETS • PELLETS • BIOMASS ENERGY



## FEEDERS

### VIBRATING CHANNELS – VFG

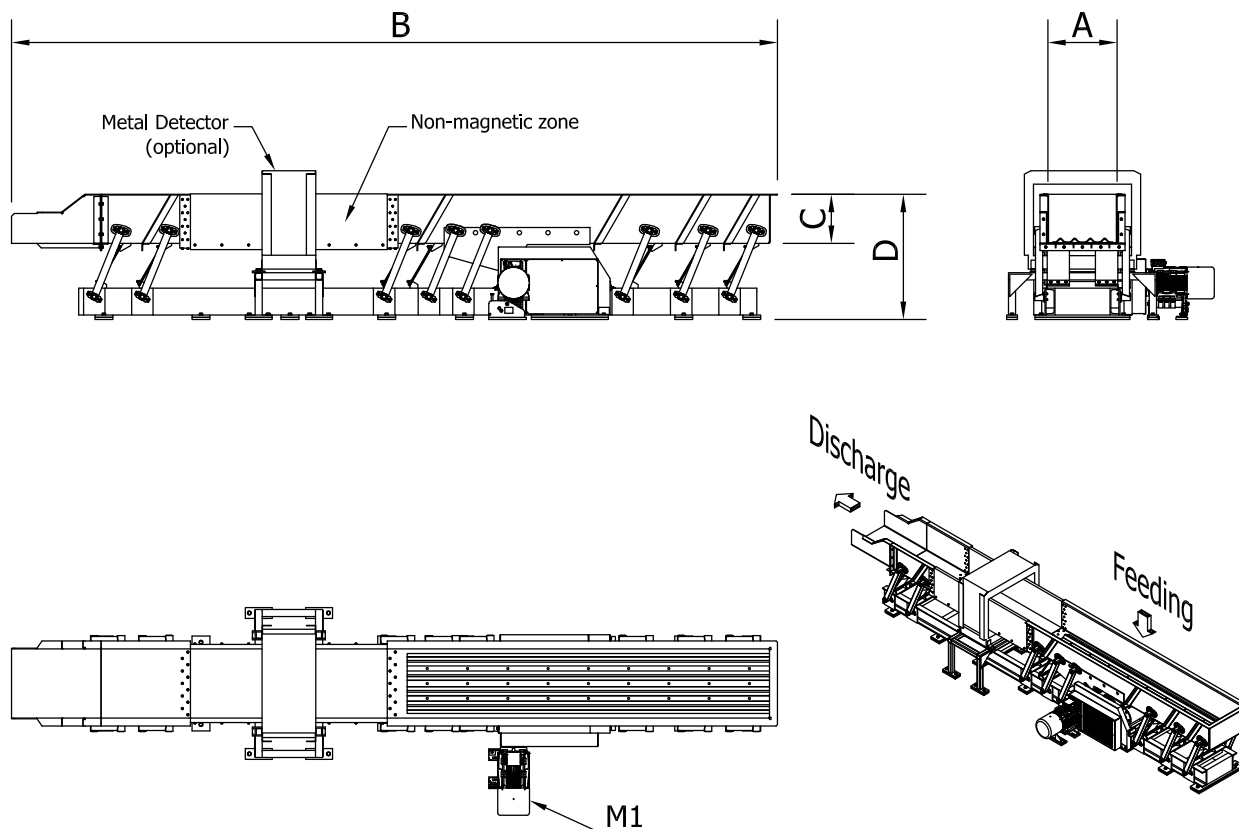
#### TECHNICAL FEATURES

• An adequate wood material feeding system is the main goal for reaching the optimal production capacity of all wood cutting machines • Globus vibrating feeder, are able to feed wood material at high speed, thanks to a special acceleration system called “leaf spring” • Extra high acceleration leave a perfect material alignment and the extra shake allow a perfect separation of stone and dust, collected by a special screen at the feeder end • The sturdiness of the driving mechanic group, together with the “leaf-spring” system made in compound material, reduces maintenance costs at the minimum.

#### BENEFITS

• Excellent feeding and fluidification of any type of raw wood • Minimized energy consumption • Low maintenance cost.





MODEL	OVERALL DIMENSIONS mm***				
	A	B	C	D	Metal Detector
VFG**	600 ÷ 1400	8000 ÷ 14000	300 ÷ 850	1000 ÷ 1700	optional

MODEL	CAPACITY m <sup>3</sup> /h	POWER kW	WEIGHT kg
		M1	
VFG**	***	11 ÷ 18,5	2500 ÷ 10000

\*\*\*According to customer needs

\*\*According to dimensions

