

PAL

EXTRACTORS

03
EXTRACTORS

TRANSLATING SCREWS, EXTRACON,
EXTRAPLUS, LEAF SPRING, HYDROMAT



/ Translating Screws

- designed for extraction of wet materials from big square silos;
- available with lateral or central point of discharge;
- low extraction cost.



/ Extracon

- suitable useful for medium-size silos, up to 10 mt diameter;
- available with one or two progressive pitch rotating screws;
- no demixing of the extracted material (excellent for CL & SL).



/ Extraplus

- suitable useful for large silos, up to 25 mt diameter;
- one progressive pitch rotating screw auto-supported;
- hydraulic drive for easy re-start even after a long stop.



/ Hydromat

- suitable for wet/dry materials like chips, sawdust, shaving, dust, ... (to be avoided for CL & SL), the system can have more than one point of discharge with different capacities;
- strong sliding scraper alternatively driven by hydraulic piston/s scaled to prevent material leakage;
- high dosing accuracy thanks to progressive pitch extraction screws.



RECTANGULAR EXTRACTORS

02.02.B

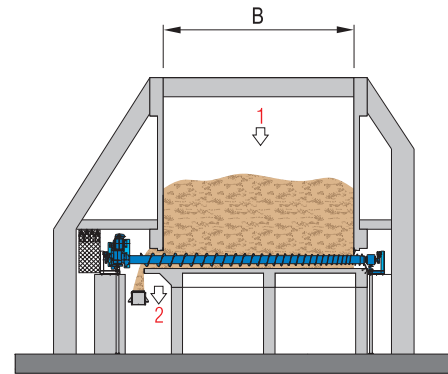
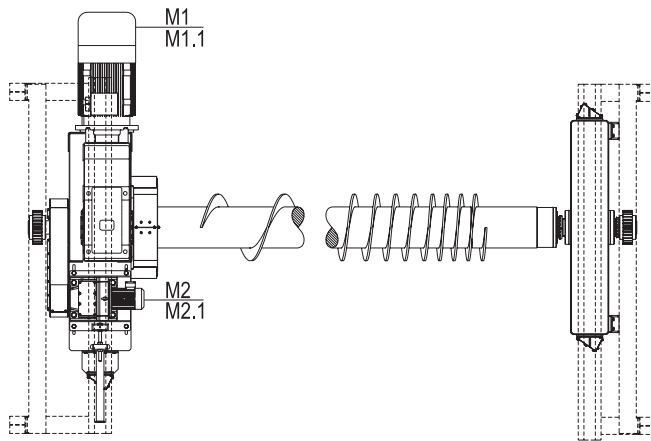
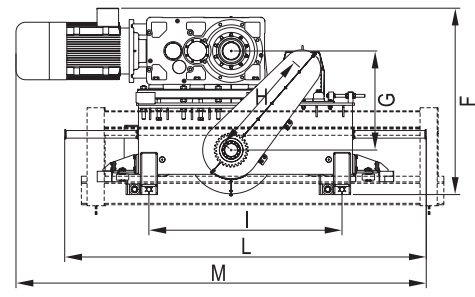
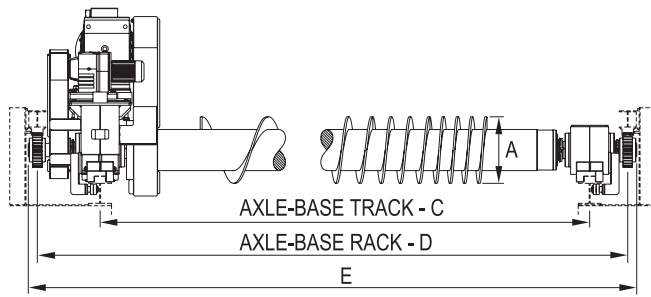
TRANSLATING SCREWS

TECHNICAL FEATURES

/ Easy installation at lower part of the storage bin / Strong extraction screws supported by two trolleys located at the ends / Travelling of screw on very strong and durable toothed guides / Extremely precision system with travelling tracks.

BENEFITS

/ Wide range of extraction capacity achieved by controlling the dosing screws with frequency converters / High dosing accuracy from progressively variable pitch screws / Very easy maintenance / Very simple and cheap system / High reliability / Very low maintenance cost.



1= FEEDING
2= DISCHARGE

M1= SCREW ROTATION
M1.1= FAN FOR COOLING

M2= TRANSLATION SCREW
M2.1= FAN FOR COOLING

Not binding data. We reserve the right of modification at any time without prior notice.

02.02.B

TRANSLATING SCREWS

MODEL	OVERALL DIMENSIONS mm											INSTALLED POWER kW	EXTRACTION CAPACITY m ³ /h	WEIGHT APPROX. KG
	A	B	C	D	E	F	G	H	I	L	M			
TSC 700/6000	700	6000	9500	10560	10750	1960	1050	1130	2030	3800	4300			10000
TSC 700/7500	700	7500	11000	12060	12250	1960	1050	1130	2030	3800	4300			12500
TSC 700/10000	700	10000	13300	14360	14550	1960	1050	1130	2030	3800	4300			16600
TSC 800/6000	800	6000	9500	10560	10750	1960	1050	1130	2030	3800	4300			10200
TSC 800/7500	800	7500	11000	12060	12250	1960	1050	1130	2030	3800	4300	*	**	12700
TSC 800/10000	800	10000	13300	14360	14550	1960	1050	1130	2030	3800	4300			16900
TSC 900/6000	900	6000	9500	10560	10750	1960	1050	1130	2030	3800	4300			10400
TSC 900/7500	900	7500	11000	12060	12250	1960	1050	1130	2030	3800	4300			12900
TSC 900/10000	900	10000	13300	14360	14550	1960	1050	1130	2030	3800	4300			17200

*Wide range available, according to project Customer needs **According to ensiled material and extraction capacity



CIRCULAR EXTRACTORS

07.03.A

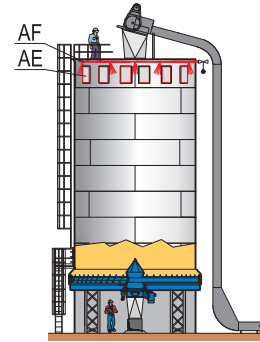
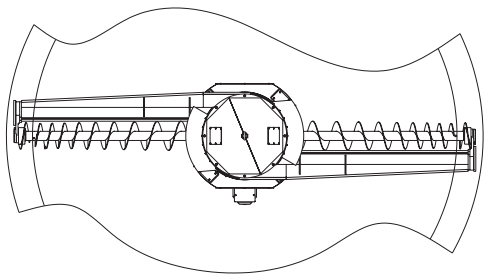
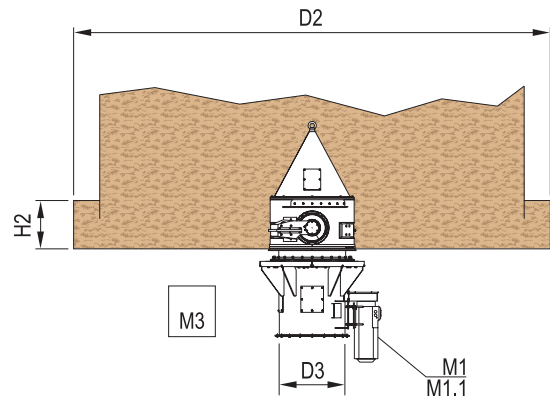
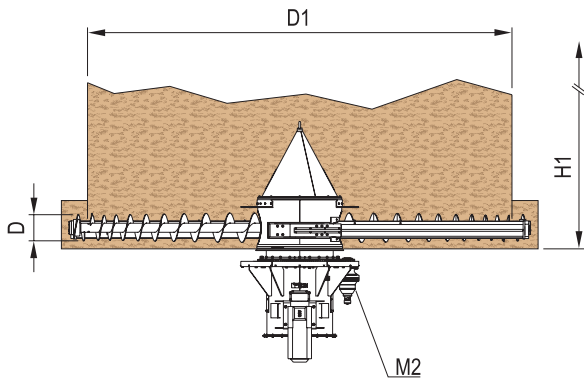
EXTRACON

TECHNICAL FEATURES

/ Rotating turret in the silo center, interconnected to a fix structure by a powerful bearing / One or two extraction screw/s driven by the main gearbox installed in the turret / Extraction screws based on progressive pitch and fitted with peripheral milling-teeth / Drive system for the turret.

BENEFITS

/ Suitable for: size silos, up to 15 m diameter • materials difficult to extract, e.g. wet-fibrous-compact / Excellent milling of the entire layer of material on the bottom of the silo / No demixing of the extracted flows (excellent for SL & CL to avoid panel blows) / High efficiency and reliability / Low maintenance.



FOR DRY MATERIAL ONLY:
AF = FIRE-EXTINGUISHING SYSTEM
AE = EXPLOSION VENTS

M1 = MAIN MOTOR
M1.1 = FAN FOR COOLING

M2 = COMAND BY HYDRAULIC POWER PACK
M3 = HYDRAULIC POWER PACK MOTOR

Not binding data. We reserve the right of modification at any time without prior notice.

07.03.A

EXTRACON

MODEL	THROUGHPUT UP TO m ³ /h	SCREWS		OVERALL DIMENSIONS mm					TOTAL INSTALLED POWER UP TO kW	WEIGHT APPROX. KG
		Pcs	D mm	D1	D2	D3	H1 UP TO	H2		
ES.10	199	1 - 2	350 - 450	4500 - 7000	D1 + 800	1000	20000	740	30	According to machine dimensions
ES.14	399	1 - 2	400 - 600	5000 - 8500	D1 + 800	1400		740	45	
ES.16	499	1 - 2	500 - 700	6000 - 10000	D1 + 1000	1600		740	110	
ES.18	650	1 - 2	600 - 800	6500 - 15000	D1 + 1000	1800		740	110	
EA.10	99	1	350 - 450	4500 - 7000	-	1000	15000	-	30	
EA.14	199	1	400 - 600	5000 - 8500	-	1400		-	45	
EA.16	250	1	500 - 700	6000 - 8500	-	1600		-	110	
EA.18	325	1	600 - 800	6000 - 8500	-	1800		-	110	

*ES = supported
EA = self-supporting



CIRCULAR EXTRACTORS

07.03.B

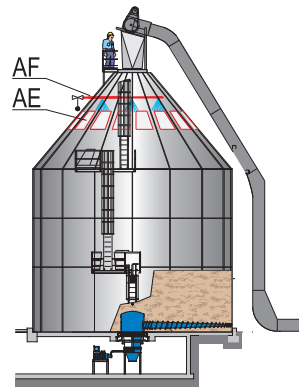
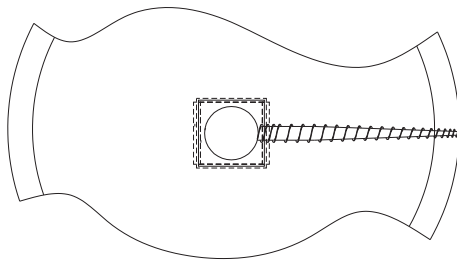
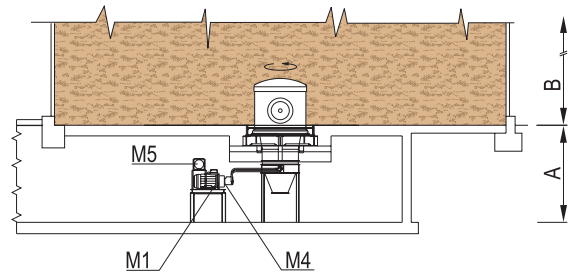
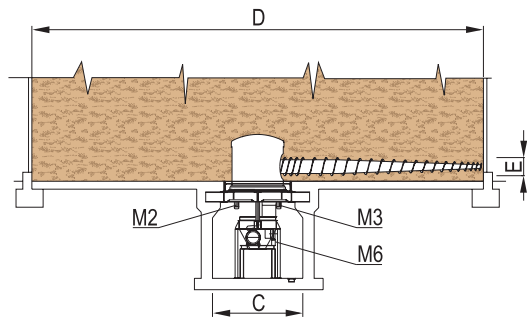
EXTRAPLUS

TECHNICAL FEATURES

/ Rotating turret in the silo center, interconnected to a fix structure by a powerful bearing / One extraction screw driven by hydraulic system and gearbox installed in the turret / Extraction screw based on progressive pitch and fitted with peripheral milling-teeth / Drive system for the turret.

BENEFITS

/ Suitable for: large silos, up to 25 m diameter • materials difficult to extract, e.g. wet-fibrous-compact / Easy inspection and maintenance / Easy re-start (even after a long stop) with hydraulic drive / Excellent milling of the entire layer of material on the bottom of the silo / No demixing of the extracted flows / High efficiency and reliability / Low maintenance.



FOR DRY MATERIAL ONLY:
 AF= FIRE-EXTINGUISHING SYSTEM
 AE= EXPLOSION VENTS

M1= MAIN SCREW ROTATION
 M2= TURRET ROTATION
 M3= TURRET ROTATION

M4= HEAT EXCHANGER
 M5= HEAT EXCHANGER FOR GEAR OIL
 M6= PUMP FOR GEAR OIL

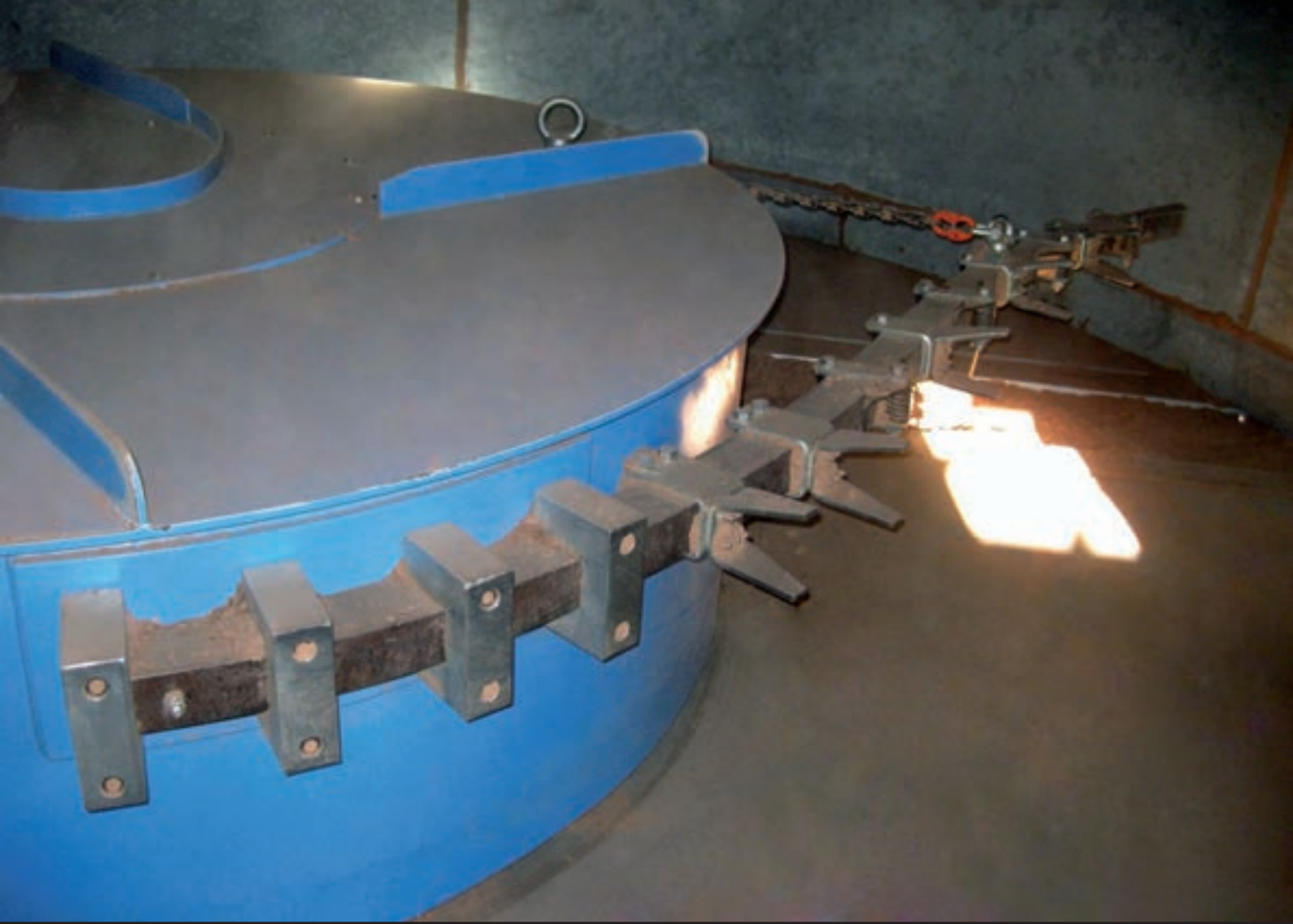
Not binding data. We reserve the right of modification at any time without prior notice.

07.03.B

EXTRAPLUS

MODEL	OVERALL DIMENSIONS mm					SILO CONTENT m ³ - top
	A	B - top	C	D	E	
SM.800-20-150-100	4400	20000	5000	20000	800	3000
SM.850-25-270-200	4400	25000	5000	25000	850	6000
SM.850-25-300-90	4400	25000	5000	25000	850	6000
SM.900-25-360-200	4400	30000	5000	25000	900	10000

MODEL	THROUGHPUT m ³ /h - top	INSTALLED POWER kW						WEIGHT APPROX. KG
		M1	M2	M3	M4	M5	M6	
SM.800-20-150-100	150	According to type of material and height of silo.						16000
SM.850-25-270-200	270							18000
SM.850-25-300-90	300							18000
SM.900-25-360-200	360							22000



CIRCULAR EXTRACTORS

07.03.C

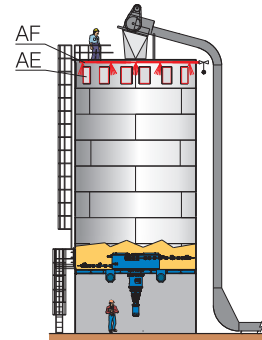
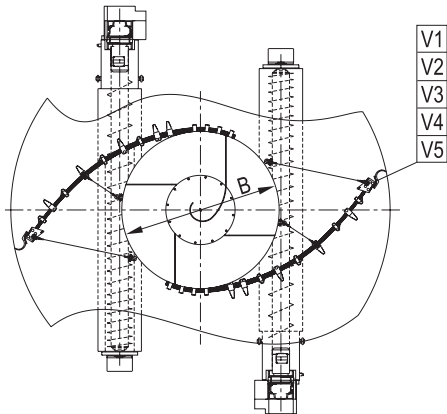
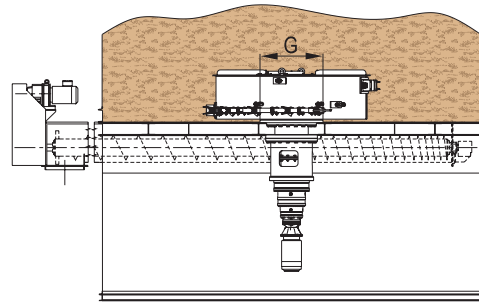
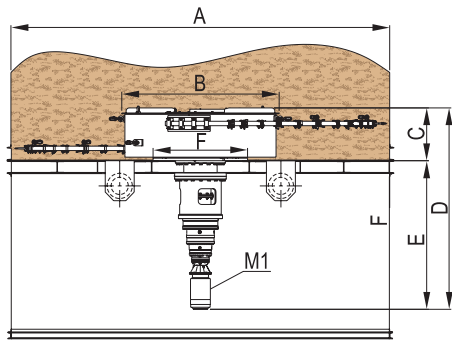
LEAF SPRING

TECHNICAL FEATURES

/ Drum rotor made of welded steel plates / Strong arms made of steel for springs / Strong execution planetary gear box / 2 devices to limit the movement of the arms / Progressively variable pitch screw/s for better accuracy / Electronic level indicator for screw empty condition / Up to 6 different dosing screws for discharge.

BENEFITS

/ Versatile destorage-dosing system for wet or dry fractioned materials i.e. chips, sawdust, shavings, particles, dust, fiber, etc. / Wide range of extraction capacity achieved by controlling the dosing screws with frequency converters / High dosing accuracy from progressively variable pitch screws / Reliable control of the silo levels / Simple and cheap system / High reliability / Very low maintenance cost.



M1 = MAIN MOTOR
 FOR DRY MATERIAL ONLY:
 AF = FIRE-EXTINGUISHING SYSTEM
 AE = EXPLOSION VENTS

MATERIAL TO PROCESS:
 V1 = TRIMMING, 60-150 KG/M3
 V2 = FIBER, 25-50 KG/M3

V3 = DUST, 150-220 KG/M3
 V4 = SAEDUST, 100-130 KG/M3
 V5 = FLAKES, 100-150 KG/M3

Not binding data. We reserve the right of modification at any time without prior notice.

07.03.C

LEAF SPRING

MODEL	OVERALL DIMENSIONS mm							INSTALLED POWER kW	EXTRACTION CAPACITY m ³ /h	WEIGHT APPROX. KG
	A	B	C	D	E	F	G	M1		
LSE.4,5-2,0-V...	4500	2000	840	3000	2160	1500	1000	Wide range available, according to project Customer needs	According to ensiled material and extraction capacity	2300
LSE.5,0-2,0-V...	5000	2000	840	3000	2160	1500	1000			2400
LSE.5,5-2,5-V...	5500	2500	840	3200	2360	1500	1000			3300
LSE.6,0-2,5-V...	6000	2500	840	3200	2360	1500	1000			3500
LSE.6,5-2,5-V...	6500	2500	840	3400	2360	1500	1000			5300
LSE.7,0-3,0-V...	7000	3000	840	3600	2760	1500	1000			5600



CIRCULAR EXTRACTORS

07.06.A

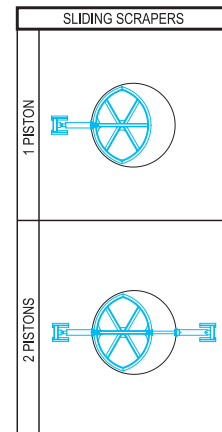
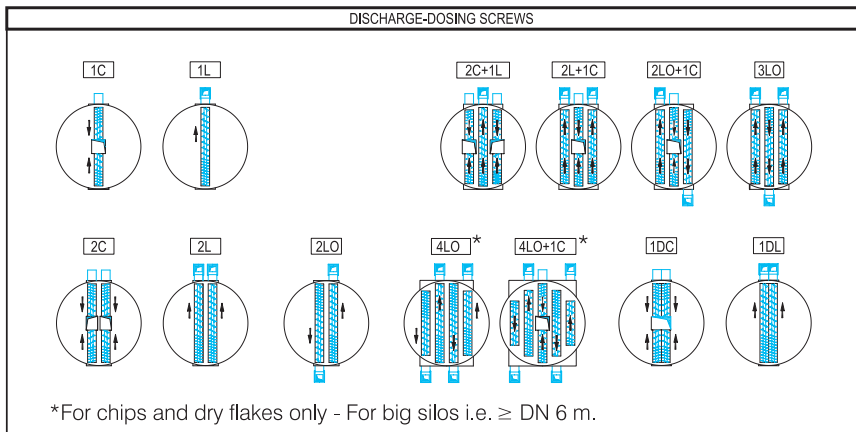
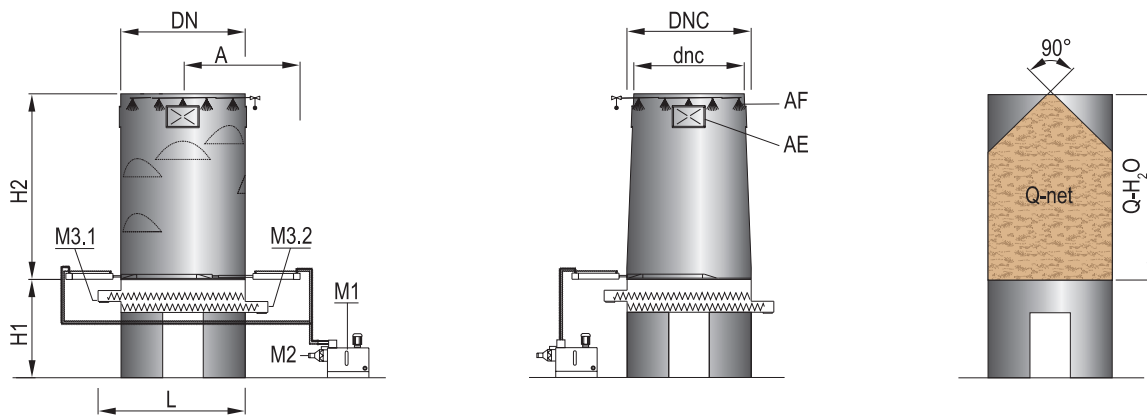
HYDROMAT

TECHNICAL FEATURES

/ Strong sliding scraper-extractor alternatively driven by hydraulic piston/s / Piston/s housing box with seals to prevent material leakage / Integrated power-pack to drive the hydraulic piston/s / Progressively variable pitch screw/s for better accuracy / Electronic level indicator for screw empty condition / Supply of silo drawing only for local manufacturing / Supply of complete silo and protections, including: bridge-breakers for cylindrical silos, when needed • continuous level indicator, i.e. ultrasound system • electromechanical levels for emergency (Top-minimum) • AF - Fire extinguishing system • AE - Explosion vents.

BENEFITS

/ Versatile destorage-dosing system for wet or dry fractioned materials i.e. chips, sawdust, shavings, particles, dust, etc. / Wide range of extraction capacity achieved by controlling the dosing screws with frequency converters / High dosing accuracy from progressively variable pitch screws / Reliable control of silo levels / Simple and cheap system / High reliability / Very low maintenance cost.



FOR DRY MATERIAL ONLY

AF = FIRE-EXTINGUISHING SYSTEM

AE = EXPLOSION VENTS

M1 = HYDRAULIC POWER-PACK

M2 = HEAT EXCHANGER

M3.1 = EXTRACTING SCREW

M3.2 = EXTRACTING SCREW

Not binding data. We reserve the right of modification at any time without prior notice.

07.06.A

HYDRMAT

MODEL	THROUGHPUT m ³ /h	OVERALL DIMENSIONS mm							SILO CONTENT m ³ UP TO		INSTALLED POWER kW				WEIGHT APPROX. KG	
		DN	DNC	dnc	A	L	H1	H2 UP TO	Q-H ₂ O	Q-net	M1	M2	M3.1	M3.2		
HYD.4,0-1P	Wide range available, according to customer needs	4000	-	-	4200	5500	According to layout requirement	9000	110	95	According to Material throughput & Characteristics					2300
HYD.4,5-1P		4500	-	-	4450	6000		10000	160	135		2400				
HYD.5,1-1P		-	5100	4300	5350	6500		10000	175	155		3300				
HYD.5,1-2P		-	5100	4300	5350	6500		10000	175	155		3500				
HYD.5,5-1P		5500	-	-	5550	7000		12000	285	245		5300				
HYD.5,5-2P		5500	-	-	5550	7000		12000	285	245		5500				
HYD.6,0-1P		6000	-	-	5800	7500		15000	425	370		6000				
HYD.6,0-2P		6000	-	-	5800	7500		15000	425	370		6300				
HYD.6,5-1P		6500	-	-	6250	8000		16000	530	460		6400				
HYD.6,5-2P		6500	-	-	6250	8000		16000	530	460		6700				
HYD.7,0-2P		7000	-	-	6500	8500		18000	690	600		7000				





/ Circular Silos