



PTH 400



PTH Series Drum Chippers

*Whatever wood,
the best chips*

GREENLINE

**PTH 300
PTH 400
PTH 400 XL
PTH 250 ENERGY**



PTH 300

PTH 300

This is the smallest model in the COMPACT line of Pezzolato drum chippers.

Both the inlet width, which allows the passage of material up to 500 x 300 mm, combined with the machine compactness, make it ideal for those who produce wood chips as fuel for domestic heating systems, for agricultural tourism, hotels, greenhouses, schools, or for those who simply need to reduce the debris from pruning.

It can be operated via the tractor PTO, or using an autonomous engine (diesel or electric) and it can be fed manually or using a mechanical loader.

The entry of material is facilitated by a feed conveyor at the end of the hopper. The PTH300 produces excellent quality chips from any type of wood (even from branches) thanks to the closed drum and the two knives, which are as wide as the drum itself.



Compact machine for 80 km/h towing



Space saving during transportation



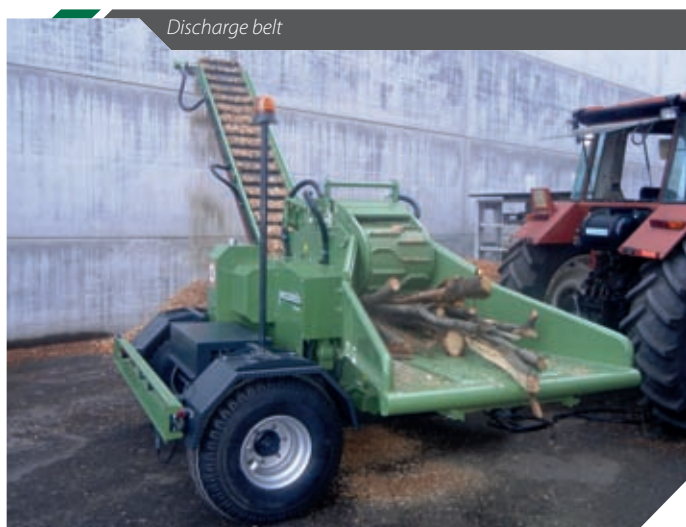
PTH 400

PTH 400

This is our flagship model in the COMPACT range of Pezzolato drum chippers, both due to the number of units sold as well as due to the quality / price ratio that allows excellent production levels despite the machine being "compact". The particularly robust structure stands out because of the inlet mouth width which enables the passage of material up to 500 x 400 mm. This particular machine is ideal for those who produce wood chips as fuel for domestic heating systems, for agricultural tourism, hotels, greenhouses, schools, or for those who simply need to reduce the debris from pruning.

It can be operated via the tractor PTO, or using an autonomous engine (diesel or electric) and it can be fed manually or using a mechanical loader.

The entry of material is facilitated by a feed conveyor at the end of the inlet mouth (a double belt covering the entire surface of the hopper can be provided upon request). The combined action of the belt and upper roller facilitates the introduction of bulk material, even using mechanical loaders. Routine maintenance and the replacement of knives can be performed extremely quickly and easily thanks to the "total" lifting of the feed roller.



Discharge belt



M version machine (Diesel) and crescent log splitter



PTH 400 XL

PTH 400 XL

The PTH 400 XL is the extra large version of model PTH 400.

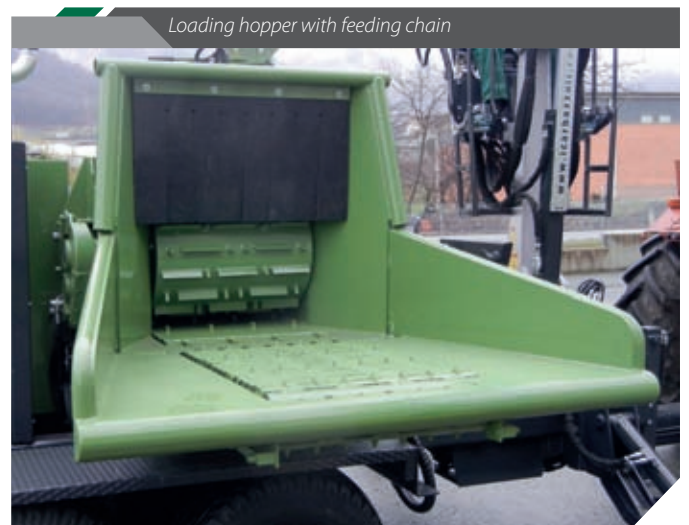
It has the same typical characteristics as small Pezzolato chippers: compactness, versatility, able to produce high quality woodchips, but it has a wider inlet to allow the passage of material up to 650 x 400 mm. The particular shape of the hopper and the action of the belt under the toothed roller allow for particularly easy feeding using a mechanical loader.

It is an all purpose professional machine given that the upper feeding roller and the cutting drum both have the same characteristics as medium power Pezzolato chippers.

The robust but deliberately compact design make it the ideal machine for working in tight spaces. This chipper is perfect for smaller forestry companies, consortiums, mountain communities, municipalities and companies operating in the road maintenance sector and fruit farming.



Tandem trailer for low speed towing and forestry loader



Loading hopper with feeding chain

EXTRAS AND CONFIGURATIONS

Pezzolato S.p.A. cares for its customers needs and listens carefully to the machines' end-users. This relationship has secured a number of customized features that are available on these machines to assure each Pezzolato PTH series chipper supplied meets or exceeds customers expectations.

\\ **NO STRESS electronic device**, available on all standard machines, automatically regulates the in-feed of material according to the available power

\\ **Recovering collecting screws**, with different size holes, easy to replace

\\ **Radio or cable remote control**, to manage the chippers main activities at a distance

\\ Removable **security bar**, for hand or crane feeding

\\ **Hydraulic orientation** (deflector rotation and direction) **discharge tube**

\\ **Tracks** to drive the machine in rough terrain

\\ **C-shaped wood-splitter** with or without chain saw

\\ **Integrated container**, with hydraulic pivoting, to collect chips wherever no means of transportation can access

\\ **Hydraulic traction**, to easily move the machine in impervious paths

\\ **Hook-lift system**

\\ **Telescopic legs** enable transportation of the chipping unit on several vehicles

\\ **Low- or high-speed towing trailer**, with air or hydraulic brakes

\\ **3 point hitch attachment**, to compact the machine and work in narrow places

\\ **Forestry cranes**, with or without cabin, in customized configuration

\\ **Stationary version with electric motor**

\\ **Charging rollers** to ease the introduction of certain types of wood

\\ **Motorized toothed roller at the hopper bottom** (for PTH 400 XL model only)



Sieving grid



C-shaped wood splitter



Integrated container



Charging rollers



Forestry cranes



Tracks



3 point hitch attachment



Electric stationary machine

These chippers guarantees the production of calibrated chips, i.e. the combustible appropriate for screw feeding of biomass plants



TECHNICAL FEATURES		PTH 300	PTH 400	PTH 400 XL	PTH 250 ENERGY
Minimum tractor power (PTO)	Hp/Kw	70/52	80/59	120/88	80/59
Maximum tractor power(PTO)	Hp/Kw	90/66	100/74	140/103	150/110
Diesel motor power	Hp/kw	126/93	126/93	175/129	
Electric engine power	Kw	45	55	55	55
Maximum chipping diameter (soft wood)	mm	300	400	400	250
Maximum chipping diameter (hard wood)	mm	200	300	300	180
Maximum inlet passage	mm	500 x 300	500 x 400	650 x 400	370 x 250
Blades	n°	2	2	2	3
Hourly throughput	m³/h	15/20	20/25	20/30	15/30
Drum diameter	mm	520	660	660	500
Drum width	mm	480	480	650	370
Feeding chain width	mm	500	500	650	
Feeding chain lenght	mm	750	750	750	
Weight motor machine (std model)*	Kg	3150	3700	4300	
Weight PTO machine (std model)*	Kg	2350	2900	3500	2000

*The above mentioned data may vary according to the machine setting

PTH 250 ENERGY

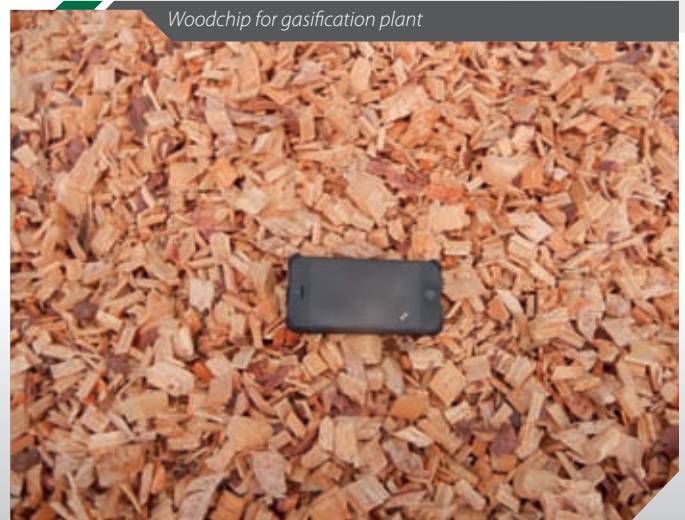
This chipper is specially designed and dedicated to woodchip gasification plants. Unlike traditional medium-small size chippers on the market, the PTH 250 ENERGY is able to produce larger wood chips than the standard using a particular and innovative cutting system which also limits the production of particulate matter.

It can be operated via the tractor PTO or by 55 kW electric motor, mounted on a low or high speed trailer, coupled to the tractor's three point attachment or left stationary. The expulsion of the chips takes place via the discharge belt with a rubber band, 3 metres long, able to evacuate material up to 2.10 meters in height.

Trailer for low speed towing and forestry loader



Woodchip for gasification plant



DEALER

