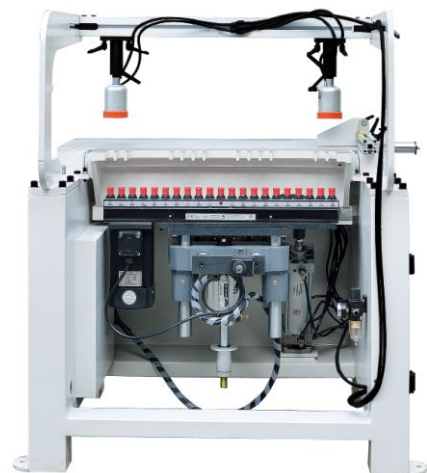


Single Line Boring Machine RMZ73211

Single line boring machine is suitable for small production enterprise or auxiliary drilling requirements of several lines boring machine. Drilling arrangement drill large range, all drill bits use fast joints that is fast and convenient; Drilling depth, drilling distance can be showed by accurate ruler, size position is quick and accurate.



Details:

1.The machine's frame is stable and structure is simple.



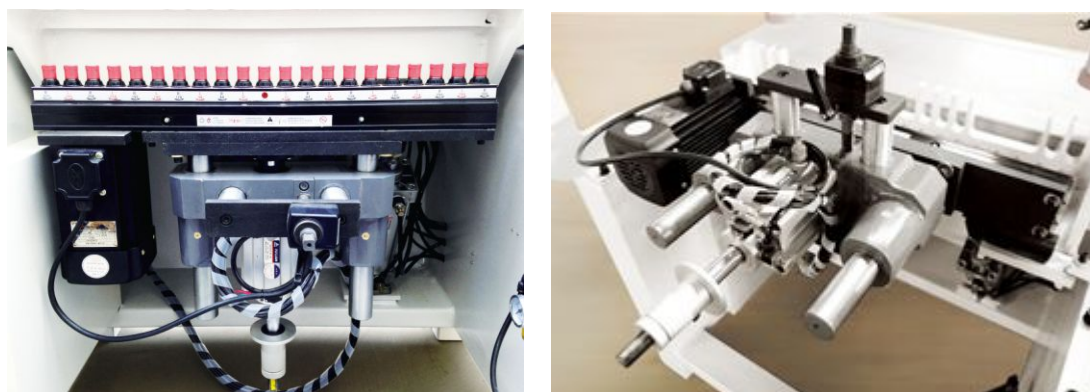
2. Control panel is operated by knob independently, icon is bright, simple and intuitive to control easily.



3. Position ruler: yellow ruler is clear to read value. Position fence can adjust driller distance by the adjustable handle.



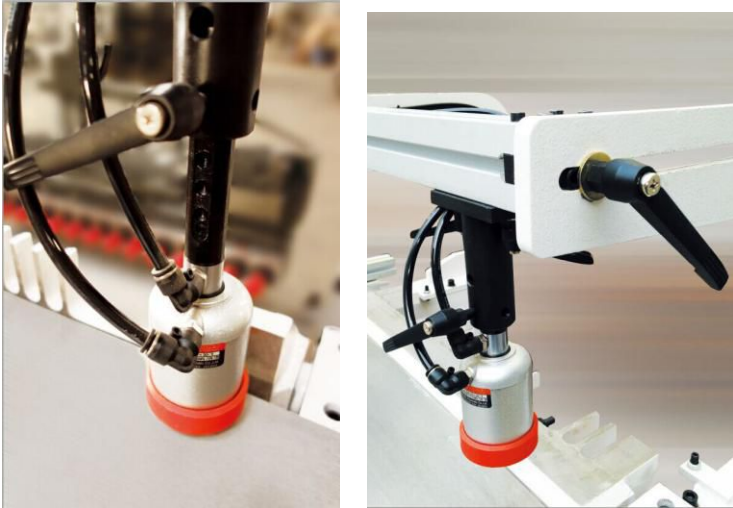
4. Drilling components can rotate 90 ° and do a vertical and horizontal drilling. Drilling depth is started by micro switch, which is less problems and easy replacement.



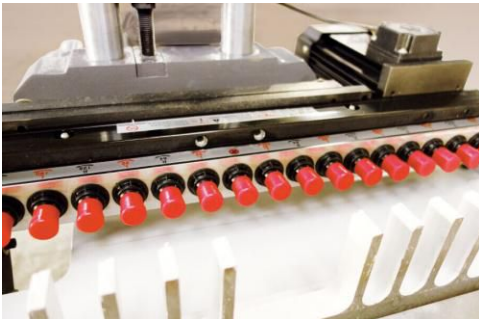
5. Drilling components have drilling depth adjusting device , scale values on ruler's flat end show drilling depth.



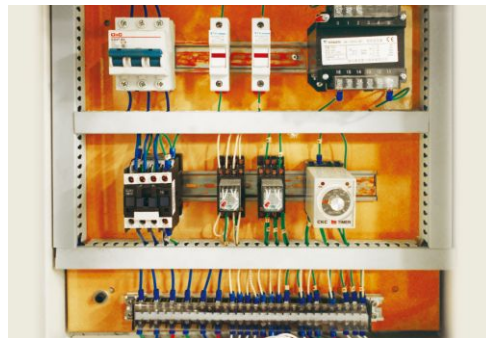
6. Pressure cylinder : adjust material thickness and vertical and horizontal distance according to sheet size by the adjustable handle , the distance of each row is 10 mm



7. The drill arrangement is 1 line with 21 bits, the holes distance is 32mm. It conforms CE standard.



8. Motor and electrical elements conform CE standard



Parameters:

Model	RMZ73211
Max. spacing between two horizontal hole	640mm
Max. panel thickness	80mm
Max. drilling depth	40mm
Drill spindle speed	2800rpm(50HZ)
Driller power	1.5kw
Working air pressure	0.6-0.8MPa
Overall dimension(L*W*H)	1200×1000×1250mm
Packing size(L*W*H)	1300×1100×1350mm