



Sliding Panel Saw RTJ45

The machine is suitable for processing all kinds of density board and particle board, ABS board, PVC board, organic glass plate and solid wood etc., that the hardness is similar board.

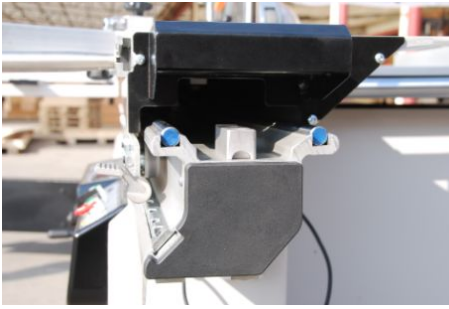


Details:

1. Material dam-board: with high-precision, flexible movement and easy operation.



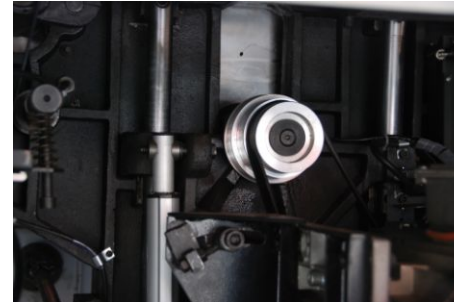
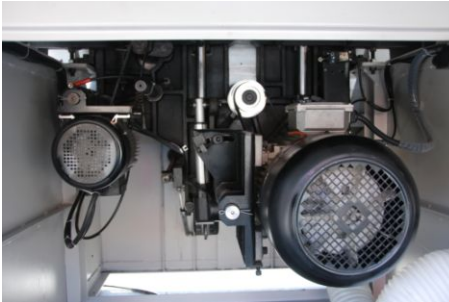
2. Movable workbench: it is linear steel pole guide way with high-precision, flexible and wear resistance.



3.Main saw blade and groove saw blade: angle of inclination is shown by the precision goniometer.



4:Machine core components: using pole guide way, makes the machine with high-precision and longer lifespan.



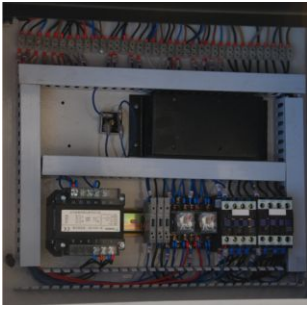
5. Control Panel: angle of inclination is shown by the precision goniometer.



6.Suction hood: equipped with European style suction hood makes the machine with a reasonable structure and strong power for suction.



7.Electrical system: all electrical parts confirm with CE standard.



8. Standard parts: material dam-board, eccentric swage, material guide-board.



9. Accessory rack: is made of precision aluminum alloy material, dimensions appear intuitive, 90° quick location lock.



Parameters:

Model	RTJ45
Cutting capacity of scoring saw	3000mm
Cutting width of right sawing	1240mm
Saw blade tilting angel	90°-45°
Max diameter of main blade	400mm
Main blade diameter	30mm
Scoring saw blade diameter	120mm
Scoring saw blade mandrel diameter	20mm
Main blade(Scoring saw blade) speed	3000/4000\5000(5600)r.p.m
Blade unit outlet diameter	120mm
Air suction quantity	1300m ³ /h
Worktable height	910mm
Sliding table width	378mm
Cutting height	130mm/92mm
Worktable size	1100X635
Main motor	5.5KW
Scoring saw motor	0.75(1)KW(HP)
Machine weight	775kg
Overall dimensions(mm)	3400*3700*1500
Package size(mm)	2195*1150*1070 Sliding panel table: 3300X435X280