

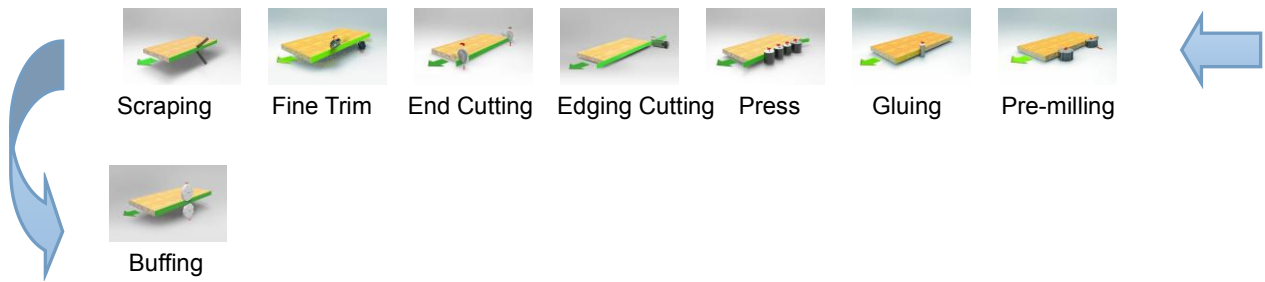
Automatic Edge Banding Machine RFB460J



The machine is suitable for such plates: MDF, block board, solid wood board, particleboard, polymer door plates, plywood etc, straight line edging and trimming. Function: pre-milling, one-time gluing, bonding and pressing edgeband, cutting edgeband, end cutting, rough trimming, fine rimming, profile, scraping, buffing, slotting and so on.; edging smoothly, feel good, edging line is straight. The machine is stable, reliable and durable, with favorable price. It is especially suitable for large and medium-sized furniture manufacturers that produce furniture, cabinets and other panel furniture.



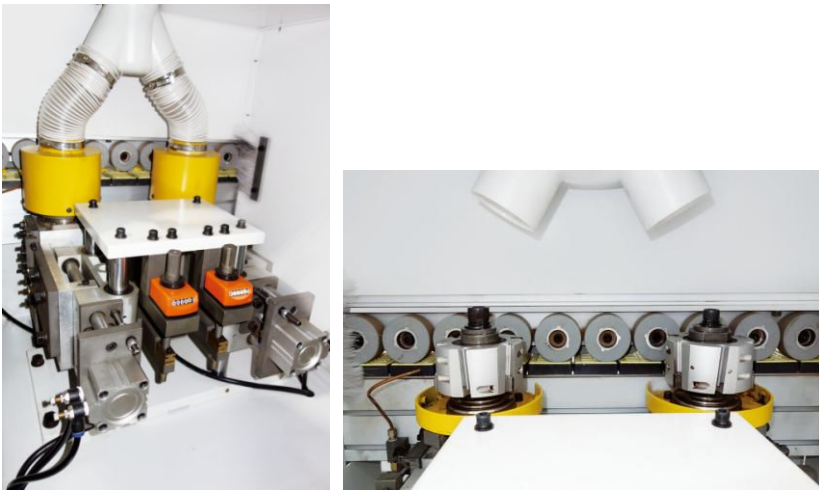
RFB460J Processing Diagram



Standard Configuration:

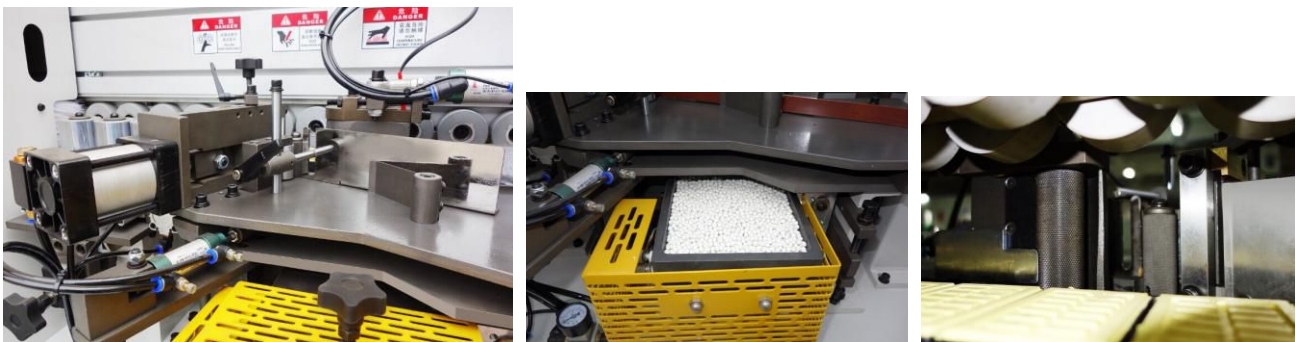
1. Pre-milling system

Two milling cutters reprocess ripple marks, burr and not vertical phenomenon, which are caused during plate working process of panel saw/scoring saw in order to achieve better edging effect and make the joint more closely between plate and edgeband, integrated and beautiful.



2. Gluing system

Special gluing system, heating fast, gluing wheels processing precisely, uniformly and perfectly .



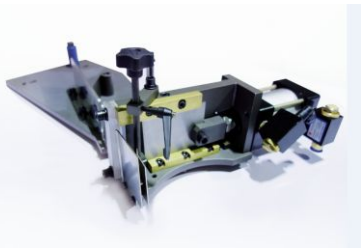
3. Pressure system

Processing work is done by two sets of wheels. Coincident working of high precision large pressure wheel and gluing wheel ensure pressure effect. Small pressure wheel contains up and down cone wheel and a straight wheel. Up and down cone wheel ensure joint of edgeband and workpiece.



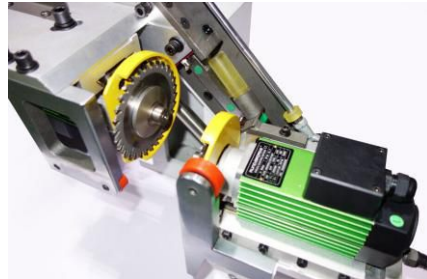
4. Edgeband cutting system

Strong cutting cylinder with a independent voltage regulating system which guarantee cutting speed and cooperating with high hardness cutter ensure the powerful cutting.



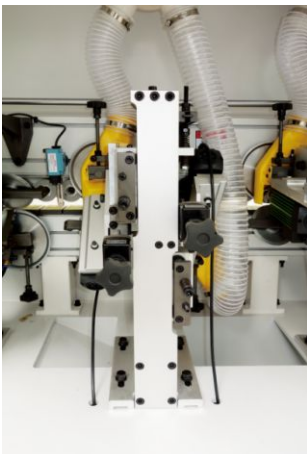
5. End cutting system

Precision linear guide movement, automatic profiling tracking and high frequency high speed motor structure ensure the smooth cut surface .



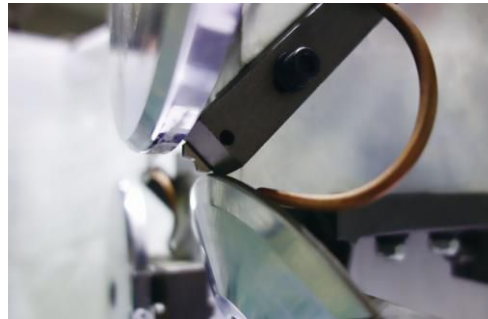
6. Fine trimming system

Up and down fine trimming tool is installed on two high frequency motor with circular arc cutters, 45 degree tilt trimming, adjustable angel, simple and stable design, very convenient and accurate to operate.



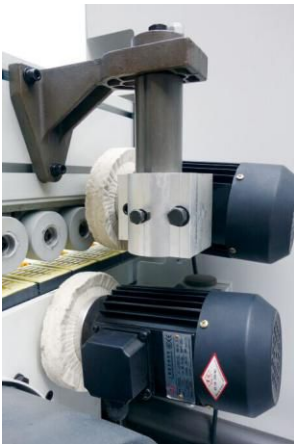
7. Scraping system

It is used for less than or equal to 3mm PVC or ABS edgeband, unpowdered scraping system is based on high stiffness structure. Two precise profile wheels each group ensure the accuracy of cutting point.



8. Buffing components

Two independent motor with buffing wheels is used for cleaning and buffing after edging. Simple design, very easy to operate.



9. Electric system

Each functional groups have independent converter to control, which ensure the co-movement control of system.



10. control panel

Perfect system program ensure the reliability of processing, simple user interface can start the machine very quickly.



11. Safety protection configuration conforming with CE standard

Each cover shield has an independent position switch, the way of shutting electric and maintenance is to ensure the safety of the serviceman and operator.



12. Pressure beam electric lifting system

(a). Manual type pressure beam lifting system is the standard configuration.



(b). Electric type pressure beam lifting system is the optional configuration. But it as the standard configuration for the machine with pre-milling function. The rise and fall of the pressure beam can be fast started on the operation screen, lifting height can be showed on a separate position indicator.



Parameter:

Model	RFB460J
Panel length	Min.120mm
Panel width	Min.80
Panel thickness	10-60mm
Edgeband width	12-65mm

Edgeband thickness	0.4-3mm
Type of edgeband	PVC, Acrylic, Veneer
Feeding speed	12-20m/min
In-put voltage	380v
In-put frequency	50hz
Out-put frequency	200hz
Total power	13kw
Required air pressure	0.7pa
Overall dimensions(L*W*H)	5200*1000*1600
Net Weight	1610kgs