

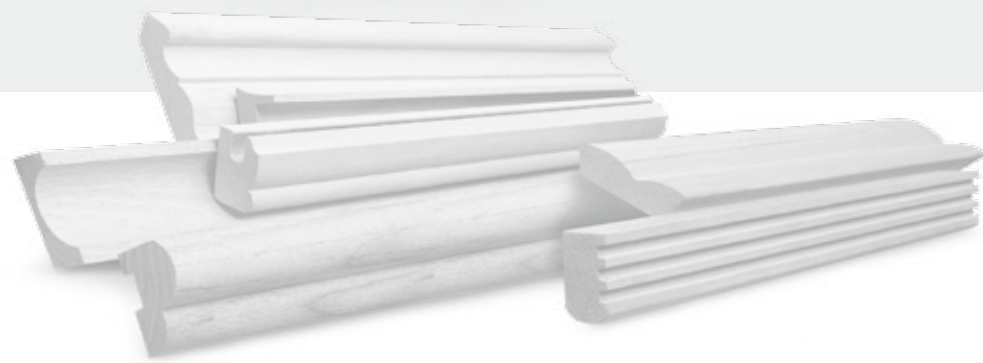
ShenKo 4-SIDE MOULDER

Perfect finish quality win your trust.

森科

Woodworking Machinery

How do you spot the peak article of moulding.



SHEN KO MACHINE CO., LTD.

791, SHEN CHOU RD, SHEN KANG DIST., TAICHUNG CITY 42948, TAIWAN.

TEL: 886-4-2562 9141 (5 LINES)

FAX: 886-4-2562 9148

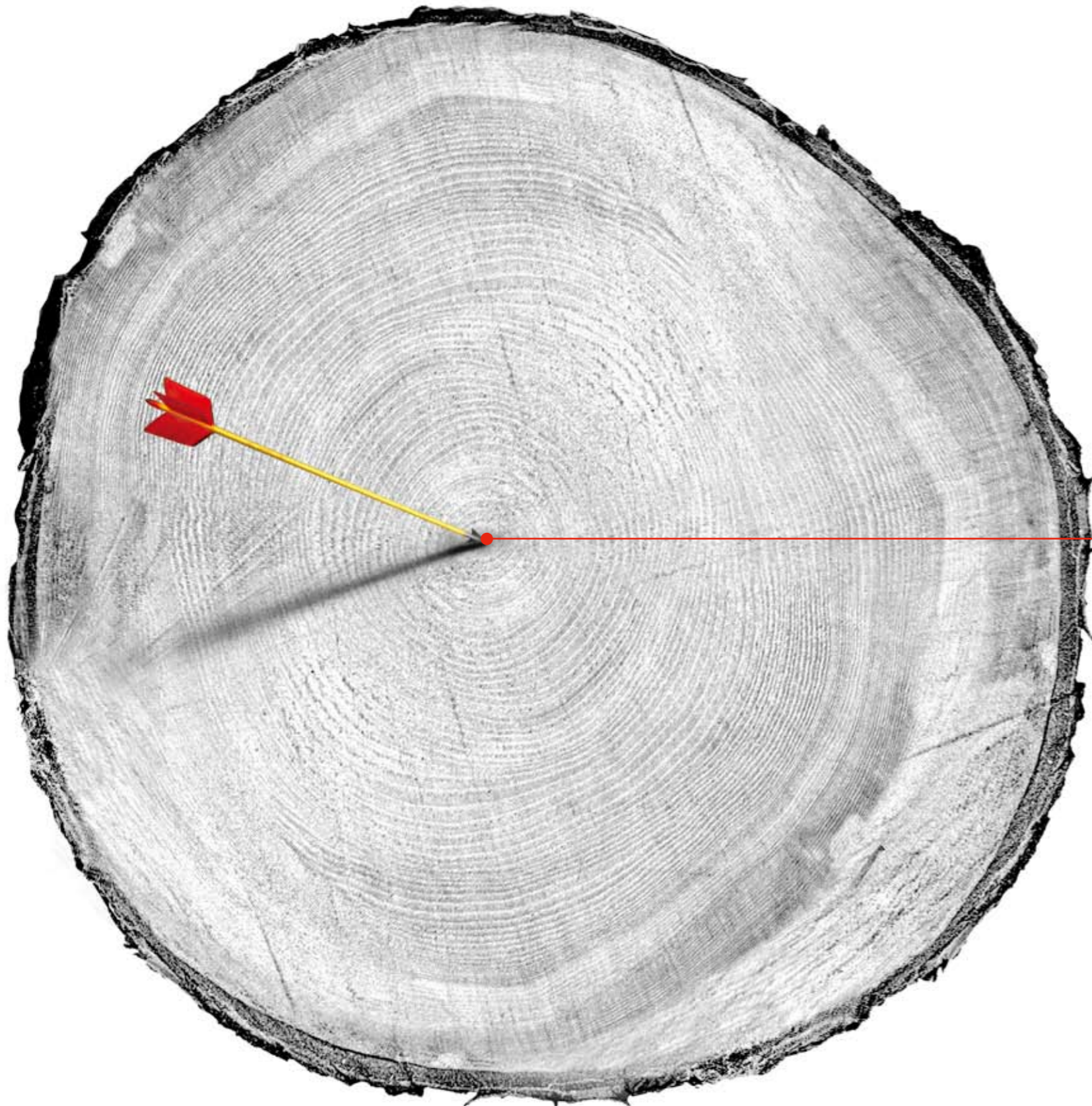
E-mail: senkoo@ms27.hinet.net

E-mail: shenko.tw@msa.hinet.net

http://www.shen-ko.com.tw



Entire Series
4-SIDE MOULDER
Perfect finish quality win your trust.



準

The 準 in Chinese has various meanings.

Among which one can be explained to be

"Approach", and this is just the Shen Ko's

pursuance in woodworking technology.

At Shen Ko's, we are committed to approach

perfection at all times.

4-SIDE MOULDER

Mouldtec 4/5/6 • SK-230 • SKG-230

High Efficiency!
Accurate!

Mouldtec 4 / 5 / 6

From the fresh appearance to high quality tradition, The MOULDTEC series 4-side Moulder is designed with excellence in mind. Now, look into its extraordinary features. The MOULDTEC features all new appearance, high accuracy cutting, user-friendly operation interface and precision constructed throughout. The MOULDTEC is not only a newly designed moulder, but also provides the best possible performance you've come to expect.



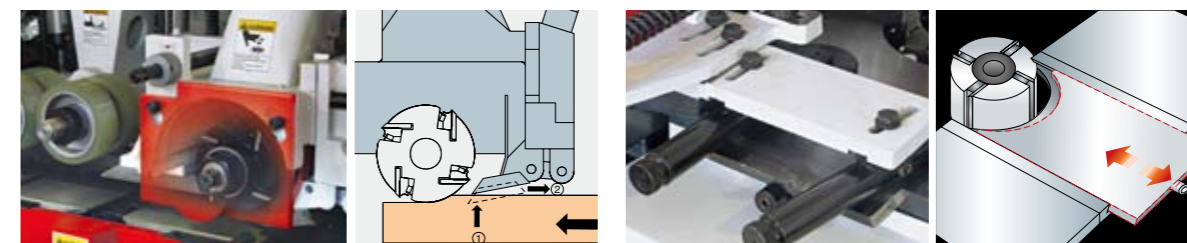
SK-230

Upgraded from the MOULDTEC series, the new SK series integrates many upgraded performances. The SK series is equipped with greater horsepower and provides increased thickness of cut. In addition, a wide range of optional equipment is available for maximum flexibility of operation.



SKG-230

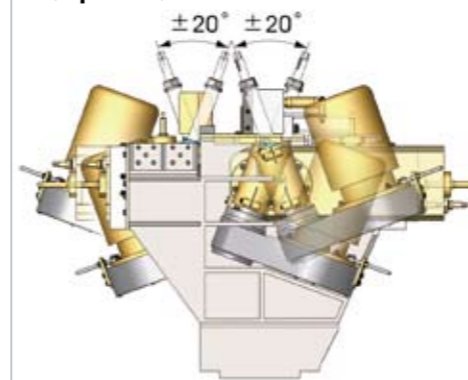
The SKG series is designed for solving your problem of hard material cutting. The series of machine is capable of cutting various wood materials. Especially for extra hard wood, moisturized wood and warped wood, the machine feeds wood smoothly while reducing wood jamming to a minimum.



Front And Rear Pressure Device for Upper Spindle

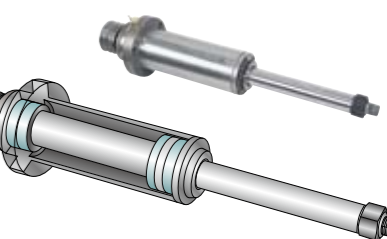
Front And Rear Pressure Device for Upper Spindle

Angled Vertical Spindle $\pm 20^\circ$ (Optional)



Inverter Controlled Feed System

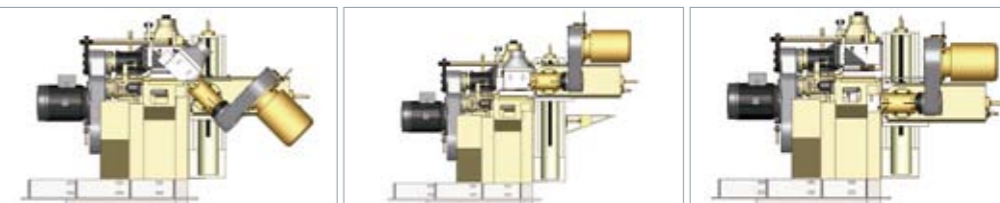
Feed speed via inverter provides positive feed. This machine can adjust the feeding speed according to the actual need. The speed range is 6-36 M/min.



Spindle

The spindle is supported by two pair of bearing to ensure accurate performance under high speed rotation.

Universal Spindle (Optional)



MODEL

	Mouldtec/6	SK-230	SKG-230
Working width min.~max.	15~230 mm	15~230 mm	15~230 mm
Working height min.~max.	10~120 mm	10~150 mm	10~150 mm
Infeed table length	1.6 M	2 M	1.2 M
Motor horse power	7.5 HP/10 HP	10 HP/15 HP	10 HP/15 HP
Feeding power	5 HP	7.5 HP	7.5 HP
Feeding speed	6 ~36 M/min	6 ~36 M/min	6 ~36 M/min
Diameter of spindle	40 mm	40 mm (50 mm Opt.)	40 mm (50 mm Opt.)
Spindle speed	6,000 RPM	6,000 RPM	6,000 RPM
Tool diameter of first bottom spindle	110~160 mm	110~160 mm	110~160 mm
Tool diameter of vertical spindle	110~180 mm	110~180 mm	110~180 mm
Tool diameter of horizontal spindle	110~180 mm	110~180 mm	110~180 mm
Adjustment range of straightening table and edge-joint	10 mm	10 mm	10 mm
Adjustment of vertical spindle	50 mm	50 mm	50 mm
Adjustment of horizontal spindle	30 mm	30 mm	30 mm
Diameter of feeding roller	140 x ϕ 35 mm	140 x ϕ 35 mm	140 x ϕ 35 mm
Width of steel feed roller	25 mm	25 mm	25 mm
Width of steel feed rollers opposite left spindle	20 mm	20 mm	20 mm
Width of rubber feed roller	50 mm	50 mm	50 mm
Max. cutting capacity for 1st bottom spindle	10 mm	10 mm	10 mm
Max. cutting capacity for 2st right vertical spindle	10 mm	10 mm	10 mm

※ Hard chrome plated table.

※ Specifications and design features are subject to change without notice.

4-SIDE MOULDER

SKG-300 • 350 • 400 • 500

High Efficiency!
Accurate!

SKG series
300 / 350 / 400 / 500

In addition to integrating all features on the SKG series, the function of SKG-300 / 350 is greatly upgraded. The increased width of cutting capacity allows the SKG-300 / 350 to cut wider panel. Furthermore, the special equipment is provided on each horizontal spindle for achieving the best finish on the surface after cut.



SKG-300 / 350

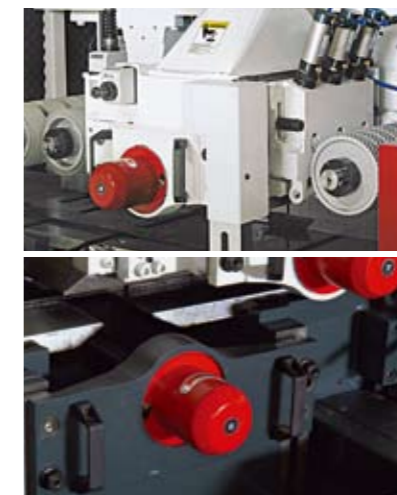


SKG-500



Pneumatic Pressure Side Wheel At Infeed Table

Eliminate the use of conventional spring load, the side pressure wheel is loaded by air system. This feature not only provides higher pressure, but also allows for flexible adjustment of pressure. No elastic fatigue occurs. The air loaded side pressure makes the machine ideal for high speed cutting operations.



Outboard Bearing Device

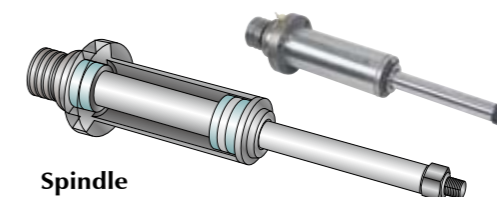
The device provides extra support for horizontal spindle to get better cutting performance and perfect finish quality.



Pneumatic Pressure Device At Opposite Side For Right Spindle



Pneumatic Pressure Device For Top Spindle



Spindle

The spindle is supported by two pair of bearing to ensure accurate performance under high speed rotation.

MODEL	SKG-300	SKG-350	SKG-400	SKG-500
Working width min.~max.	20~300 mm	20~350 mm	20~400 mm	20~500 mm
Working height min.~max.	10~150 mm	10~150 mm	10~200 mm (250mm Opt.)	10~200 mm (250mm Opt.)
Straightening table length (Hard chrome plated)	1.2 M	1.2 M	1.2 M	1.2 M
Spindle power	15 HP & 20 HP	15 HP & 20 HP	20 HP & 25 HP	20 HP & 25 HP
Feeding power	7.5 HP	7.5 HP	10 HP (15 HP Opt.)	10 HP (15 HP Opt.)
Feeding speed	6 ~36 M/min	6 ~36 M/min	6 ~36 M/min	6 ~36 M/min
Diameter of spindle	50 mm	50 mm	50 mm	50 mm
Speed of spindle	6,000 RPM	6,000 RPM	6,000 RPM	6,000 RPM
Diameter of cutter for 1st bottom spindle	125~180 mm	125~180 mm	125~180 mm	125~180 mm
Diameter of cutter for vertical spindle	125~180 mm	125~180 mm	125~180 mm	125~180 mm
Diameter of cutter for horizontal spindle	125~230 mm	125~230 mm	125~230 mm	125~230 mm
Adjustment range of straightening table	10 mm	10 mm	10 mm	10 mm
Adjustment of vertical spindle	50 mm	50 mm	50 mm	50 mm
Adjustment of horizontal spindle	30 mm	30 mm	30 mm	30 mm
Diameter of feed roller	140 x ø35 mm	140 x ø35 mm	200 x ø45 mm	200 x ø45 mm
Width of steel feed roller	25 mm	25 mm	50 mm	50 mm
Width of feed roller opposite to left spindle	20 mm	20 mm	20 mm	20 mm
Width of rubber feed roller	50 mm	50 mm	50 mm	50 mm
Max. cutting capacity for 1st bottom spindle	10 mm	10 mm	10 mm	10 mm
Max. cutting capacity for 2st right vertical spindle	10 mm	10 mm	10 mm	10 mm

※ Hard chrome plated table.

※ Specifications and design features are subject to change without notice.

Computerized Touch Controller

Computerized Automatic Spindle Positioning

Fast ! Convenient ! Accurate !



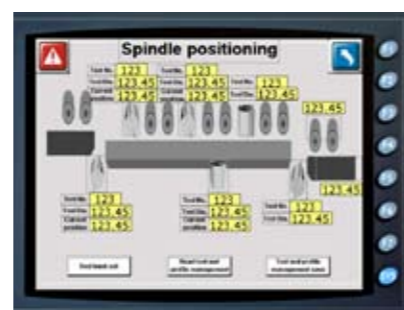
PLC Control in Combination With HMI Touch Screen Exhibits User-friendly Operation

- The 10.4" high resolution touch screen.
- Computerized automatic cutter calibration dramatically shortens time of tool calibration.
- Spindle positioning accuracy: 0.01 mm.
- 200 sets of cutter data display.
- 50 sets of memory capacity of production modules.
- Far end monitoring functions: Far end machine trouble shooting assistance and far end production module management. (Optional)
- Error message display facilitates trouble shooting.
- Also suitable for small lots flexible production mode.
- Spindle arrangement can be varied according to customer's requirement.



Main Menu Display
The main menu display provides 3 operation modes as below:

- For entering into spindle positioning display.
- For entering into production mode display.
- Working light ON/OFF control.

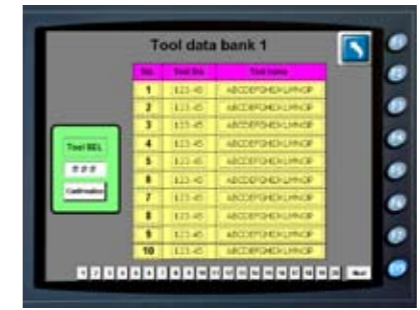


Cutter Spindle Positioning Display
The operator may select the cutter spindles to be adjusted through this display.



Spindle And Infeed Table Positioning Display

- This display allows the operator to set spindle position.
- Spindle positioning accuracy: 0.01 mm.
- In case the entered positioning value is bigger than the rated limit value, the computer will change the value to the allowable maximum value.



Cutter Spindle Data display

- This display is a cutter data bank.
- It displays 200 sets of cutter data.



Module Saving Display

- The operator may save cutter data and finished product sizes through this display.



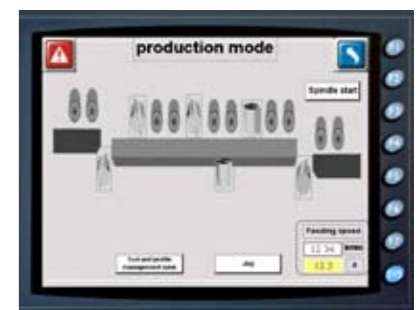
Module Reading Display

- This display shows 50 sets of cutter data and finished product sizes.



All Spindles Positioning Display

- The operator may use this display to perform all spindles positioning simultaneously.



Production Mode Display

- This display provides length calculation function, that allows the operator to understand the current production quantity.
- Feed speed is also set on this display.



Jog Positioning Display
The jog positioning display provides jog positioning for each spindle and the upper pressure rollers.



Error Message Display

- During operation, if any abnormal motion or trouble occurs, error message will automatically show on this display.
- The error message display enables the operator to understand the cause of error and provides convenience in trouble shooting.

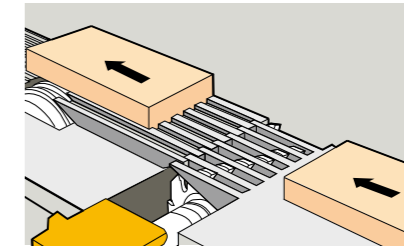


Historic Error Message Display

- This display recorded the error conditions that have ever occurred and the trouble shooting times.
- Recording capacity is of up to 50 sets.

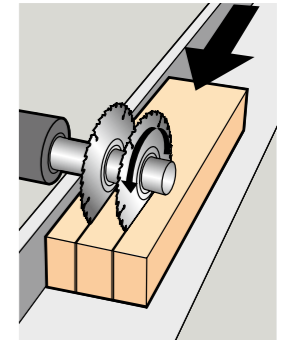
High Speed Short Wood 4-Side Moulder

SKG-230GH



Groove Guide Table

Moulder machine equip groove guide table can process short timber or twisted timber.



Multiple rip Sawblades (Optional)

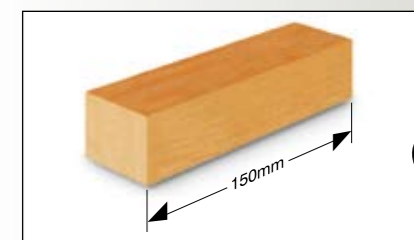
The multiple rip sawblades are available only for 6-spindle model. The sawblades are mounted on the 5th top spindle.



Automatic feeding for short stock.

SKG-230GH

The SKG-230GH series is designed and engineered for great saving for your wood cost. The short wood come from other machines are reusable on the SKG-230GH series. With its high speed feed system, you not only save cost of wood waste, but also get high efficiency production. It's a highly productive series you've come to expect.



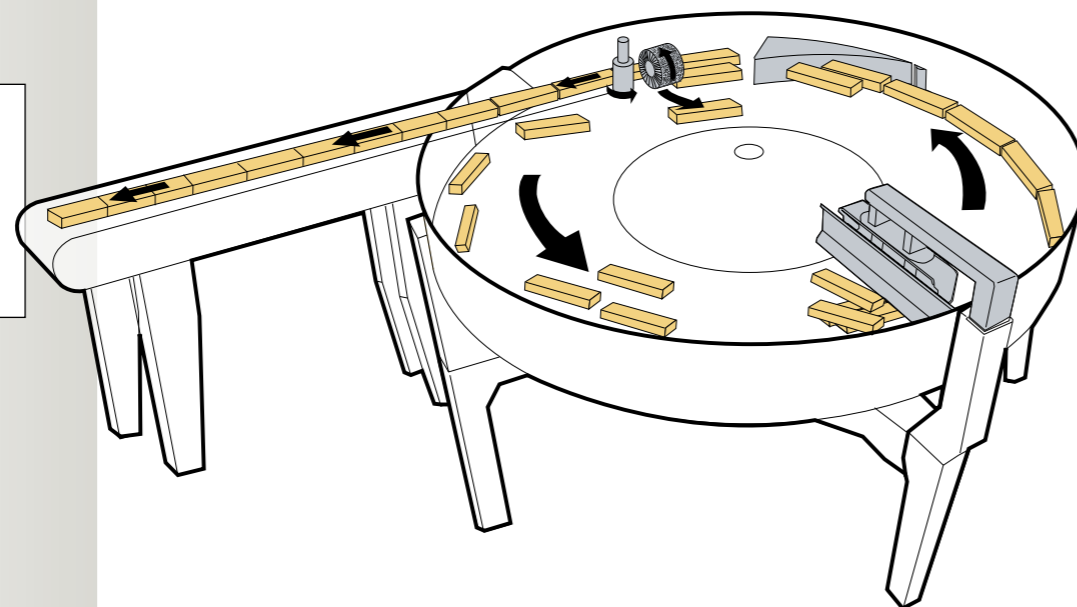
Min working length 150mm.

Centrifugal Force Type Feeding System (Optional)

- For saving manual indeed of wood.
- Reduce machine loss (Wood feed without touch between pieces results in loss of machine).
- Increase efficiency. Manual feed speed can reach only 30 M/min. With the optional feeding system feed speed may increase to 60 M/min.

MODEL AT11 Centrifugal Force Type Feeding System

Timer Length	150-450 mm
Max. Timber width	20-100 mm
Max. Timber thickness	20-100 mm
Circle Diameter	2.1 M
Feeding Motor	3 HP
Block Motor	1/2 HP x 3
Feeding Speed	10-60 M/min



Belt Type Infeed Conveyor

- Feeding speed 10-80 M/min.
- Working width 35-150 mm.
- Variable feed speed controlled by frequency inverter. Feed speed display.
- Maximum operation convenience. Easy to adjust width of cut.



Pneumatic element for left spindle. Reduced distance between feed rollers.

MODEL

SKG-230GH

Working width min.~max.	35~230 mm
Working height min.~max.	10~120 mm
Min. working length	150 mm
Straightening table length (Hard chrome plated)	1.2 M
Spindle power	10 HP & 15 HP
Feeding power	7.5 HP
Feeding speed	10~60 M/min
Diameter of spindle	40 mm (50 mm Optional)
Speed of spindle	7,200 RPM (9,000 RPM Optional)
Diameter of cutter for 1st bottom spindle	125~160 mm
Diameter of cutter for vertical spindle	125~180 mm
Diameter of cutter for horizontal spindle	125~180 mm
Adjustment range of straightening table	10 mm
Adjustment of vertical spindle	50 mm
Adjustment of horizontal spindle	30 mm
Diameter of feed roller	140 x ø35 mm
Width of feed roller	25 mm
Width of feed roller opposite to left spindle	20 mm
Width of rubber feed roller	50 mm
Max. cutting capacity for 1st bottom spindle	10 mm
Max. cutting capacity for 2st right vertical spindle	10 mm

- Hard chrome plated table.
- Pneumatic pressure device for top spindle.
- Pneumatic pressure device for left spindle.
- Groove table.
- Short wood automatic feeding device.
- Belt type feeder.

※ Specifications and design features are subject to change without notice.

Multiple Spindle Vertical Slicer Machine

SKG-230S Series



SKG-230S

The SKG-230S series not only combines the features of traditional 4-side moulder, but also provides slicing function. The series is designed for saving machining time while greatly upgrading throughput. The SKG-230S is a special purpose machine with cross cut and slicing function. It's applicable for composite parquet, Venetian blind, window curtain and air-tight window, etc.

Motorize Out Feed Vertical Roller Device (Optional)

Mounted at the end of out feed table to provide Finish product feeding smoothly after splitting.

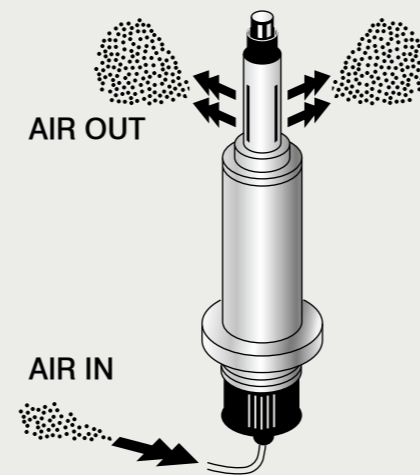


Sawblade Cleaning Device

The cleaning solvent reservoir provides solvent flushing together with outside cooling air to the blades for cleaning off the dusts existed on the blades. It also helps to reduce heat generation on the blades. The cleaning device permits time setting as desired.

Sawblade Cooling System

An air cooling system is applied for cooling blades during slicing, that reduces blades heat generation. A combination of cooling through spindle and outside air cooling for blades feature excellent cooling effect. The specially designed air cooling system not only greatly extends blades life but also ensures high cutting accuracy.



Multiple Sheets Slicing

The two vertical spindles can be fitted with multiple sawblades for producing multiple sheets at a time.



Scoring Sawblades

The machine is available to equip with additional scoring sawblades for slicing. The scoring blades may avoid tearing problem while upgrading slicing speed.



MODEL

MODEL	SKG-230S
Working width min.~max.	60~180 mm
Product thickness range	2~20 mm
Max. sheets of slicing	Max. 5 sheets
Spindle motor	7.5 HP~10 HP
Scoring sawblade motor	10 HP (15 HP Optional)
Slicing blade motor	20 HP (30 HP, 40 HP Optional)
Feed drive motor	5 HP
Feed speed	4 ~24 M/min
Spindle speed	6,000 RPM
Scoring blade spindle speed	3,600 RPM
Infeed table length	1.2 M
Slicing blade spindle speed	3,600 RPM (Inverter control 2,800~6,000 RPM Optional)

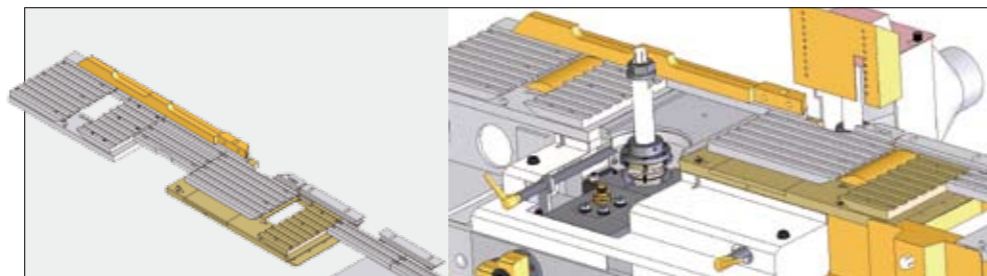
- Frequency inverter control for variable speed change. Feed speed display.
 - Centralized lubrication system for spindle bearings.
 - Slicing spindle running is transmitted by timing belt without slipping problem.
 - Pneumatic loaded pressure device assures maximum stability during slicing.
 - A combination of cooling through spindle and outside air cooling for blades, assuring outstanding cooling effect.
 - Hard chrome plated table.
- ※ Specifications and design features are subject to change without notice.

High Speed 4-Side Moulder For Parquet

SKG-230H / 6 Series

Designed for producing both solid wood floor and multi-layer floor, the SKG-230H of machine features outstanding feed system. The initial stage feeder is used for stacking wood, and rear stage feed is performed by a buffering type feeder.

The outstanding feed system design permits continuous infeed without gap between wood materials during feeding. This ensures high accuracy cutting. Its high speed feed system greatly upgrades production efficiency, while assuring superior product quality.



Double Table Plate (Optional)

The top plate come with light groove to reduce the friction between parquet and table. It is longer the life of working table, and easy to replace while wear out.



Vacuum Parquet Feeder

Technical Information For Single Stage Parquet Feeder:

- Parquet delivery and pressing at central position.
- The parquets continuously feed into the machine without gap between parquets.

MODEL	AT07
Vacuum Parquet Feeder	

Feed motor	2 HP (inverter control)
Feed speed	10-80 M/min
Length	3500 mm
Install vacuum device	



The table for first bottom spindle is available to be double trimming table for setting width. Also it can be used as the bottom spindle.

MODEL	SKG-230H/6
--------------	-------------------

Working width min.~max.	10~230 mm
Working height min.~max.	10~120 mm
Straightening table length	1.2 M
Spindle power	10 HP & 15 HP
Feeding power	7.5 HP
Feeding speed	10~60 M/min
Diameter of spindle	40 mm (50 mm Optional)
1st bottom horizontal spindle speed (Reversible running)	6,000 RPM
Vertical spindle speed	7,200 RPM (9,000 RPM Optional)
Top horizontal spindle speed	7,200 RPM (9,000 RPM Optional)
Diameter of cutter for 1st bottom spindle	110~160 mm
Diameter of cutter for vertical spindle	110~180 mm
Diameter of cutter for horizontal spindle	110~180 mm
Adjustment range of straightening table	10 mm
Adjustment of vertical spindle	50 mm
Adjustment of horizontal spindle	30 mm
Diameter of feed roller	140 x ø35 mm
Width of feed roller	25 mm
Width of feed roller opposite to left spindle	20 mm
Width of rubber feed roller	50 mm
Max. cutting capacity for 1st bottom spindle	10 mm
Max. cutting capacity for 2st right vertical spindle	10 mm

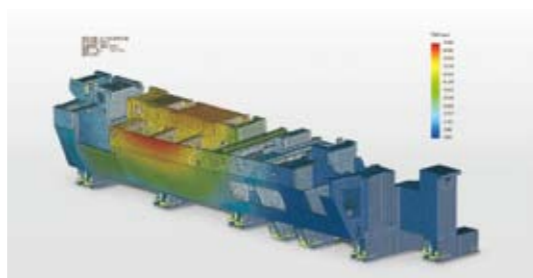
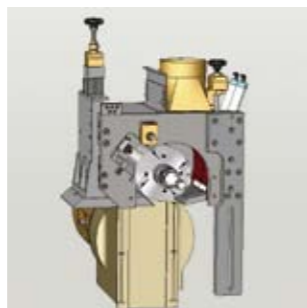
- Initial feeder.
 - Buffering type feeder.
 - Double air cylinders loaded pressure roller for vertical spindle.
 - Hard chrome plated table.
- ※ Specifications and design features are subject to change without notice.

HMI High Speed 4 Side Moulder

SKG-230JH



The newly developed High Speed Computerized 4-side moulder from Shen Ko is excellent for long wood materials machining, such as construction materials, wall boards and finger jointer materials, etc. Equipped with jointer device and cross type chain feed conveyor table, the machine not only produces extra fine surface of product, but also dramatically increases machining efficiency.



The machine structure is subject to Finite Element Analysis, allowing the machine to achieve the optimal stability during running and high quality of machining.

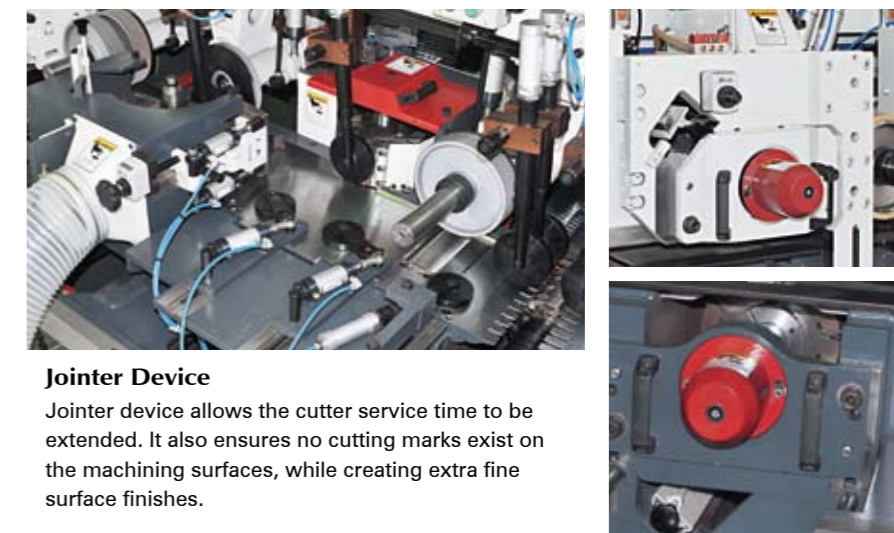


The reinforced top feed roller for the first spindle is equipped with special device to eliminate wood jamming problem.



PLC Control in Combination With HMI Touch Screen Exhibits User-friendly Operation (optional)

- The 10.4" high resolution touch screen.
- Computerized automatic cutter calibration dramatically shortens time of tool calibration.
- Spindle positioning accuracy: 0.01 mm.
- 200 sets of cutter data display.
- 50 sets of memory capacity of production modules.
- Error message display facilitates trouble shooting.
- Also suitable for small lots flexible production mode.
- Spindle arrangement can be varied according to customer's requirement.



Jointer Device

Jointer device allows the cutter service time to be extended. It also ensures no cutting marks exist on the machining surfaces, while creating extra fine surface finishes.

MODEL

SKG-230JH

Working width min.~max.	30~230 mm
Working height min.~max.	10~150 mm
Straightening table length (Hard chrome plated)	1.2 M
Spindle power	20 HP/25 HP (30 HP Opt.)
Feeding power	20 HP/25 HP
Speed of spindle	10~80 M/min
Diameter of spindle	40 mm (50 mm Opt.)
Feeding speed	6,000 RPM
Diameter of cutter for 1st bottom spindle	125~180 mm
Diameter of cutter for vertical spindle	150~200 mm
Diameter of cutter for horizontal spindle	150~230 mm
Adjustment range of straightening table	10 mm
Adjustment of vertical spindle	50 mm
Adjustment of horizontal spindle	30 mm
Diameter of feed roller	200 x ϕ 45 mm
Width of feed roller	50 mm
Width of feed roller opposite to left spindle	20 mm (in creased width available)
Width of rubber feed roller	50 mm
Max. cutting capacity for 1st bottom spindle	10 mm

- Jointer device
- Out broad bearing support on horizontal spindle
- Table surface is hard chrome treat

※ Specifications and design features are subject to change without notice.

Cross Type Chain Feed Conveyor Tape

AT12

Feeding width min.~max.	20~230 mm
Feeding height min.~max.	10~150 mm
Working length	400~5,000 mm
Material waiting area	2 M (Available to adjust according to wood size)
Feeding power	7.5 HP
Speed of spindle	10~80 M/min
Diameter of feed roller	ϕ 200 mm
Cross type chain feed motor	3 HP



Without jointer device, the timber have clear cutter mark.



Equip jointer device, the timber have no cutter mark under 80 M/min processing.

Top And Bottom Planer With Multiple Rip Saw

SKG-230R • 300R • 350R



230 / 300 / 350R

The series of machine looks like a 4-side moulder, but it combines double surface planer with multiple rip saw in one. The series will reduce machining processes, while increasing operational convenience. Other benefits are shortening production time and saving time and labor costs.



MODEL	SKG-230R	SKG-300R	SKG-350R
-------	----------	----------	----------

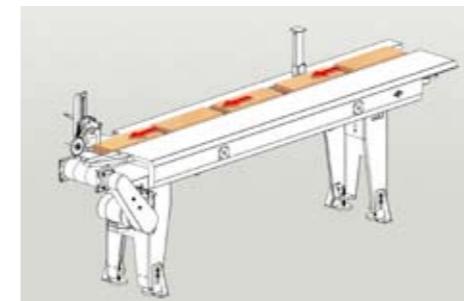
Working width min.~max.	230 mm	300 mm	350 mm
Maximum thickness of ripping	75 mm	75 mm	75 mm
Feed table length	1.2 M	1.2 M	1.2 M
1st bottom spindle motor	10 HP	15 HP	15 HP
1st top spindle motor	15 HP	15 HP	20 HP
Sawblade spindle motor	30 HP	40 HP	40 HP
Feeding power	5 HP	7.5 HP	7.5 HP
Elevation motor	1 HP	1 HP	1 HP
Feeding speed	6~36 M/min	6~36 M/min	6~36 M/min
Diameter of spindle	50 mm	50 mm	50 mm
Diameter of rip saw spindle	50 mm	50 mm	50 mm
Speed of 1st bottom horizontal spindle	6,000 RPM	6,000 RPM	6,000 RPM
Speed of 1st top horizontal spindle	6,000 RPM	6,000 RPM	6,000 RPM
Speed of sawblade spindle	3,200 RPM	3,200 RPM	3,200 RPM
Keyway width on sawblade spindle	10 mm x 2	10 mm x 2	10 mm x 2
Diameter of cutter for 1st bottom spindle	125~160 mm	125~160 mm	125~160 mm
Diameter of cutter for 1st top spindle	125~180 mm	125~180 mm	125~182 mm
Maximum diameter of sawblade	φ305 mm	φ305 mm	φ305 mm
Adjustment range of straightening table	10 mm	10 mm	10 mm
Adjustment range of horizontal spindle	30 mm	10 mm	10 mm
Diameter of steel feed roller	140 x φ35 mm	140 x φ35 mm	140 x φ35 mm
Width of steel infeed roller	25 mm	25 mm	25 mm
Width of steel outfeed roller	50 mm	50 mm	50 mm
Max. cutting capacity for 1st bottom spindle	10 mm	10 mm	10 mm

- Hard chrome plated table.
- Out broad bearing device for horizontal spindle.
- Anti-kickback device.
- Pneumatic pressure device for top spindle.

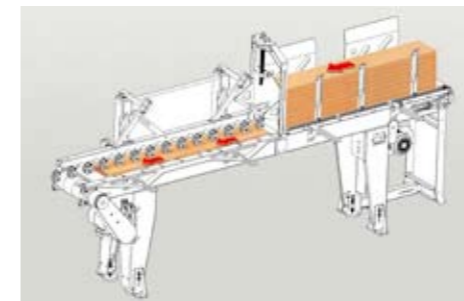
※ Specifications and design features are subject to change without notice.

FEEDING DEVICE

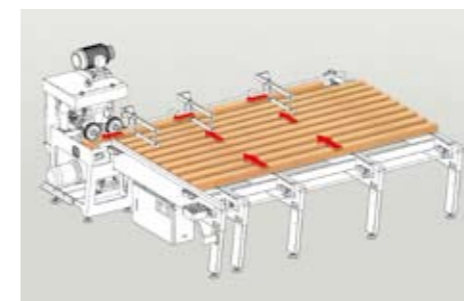
AT05 Buffering Type Feed Device



AT07 Vacuum Parquet Feeder



AT12 Cross Type Chain Feed Conveyor Tape



AT01 Automatic Feeding Device

