

SHERWIN-WILLIAMS®

Waterborne systems for high-humidity environments



Visit www.sherwin-williams.eu

Waterborne systems for high-humidity environments

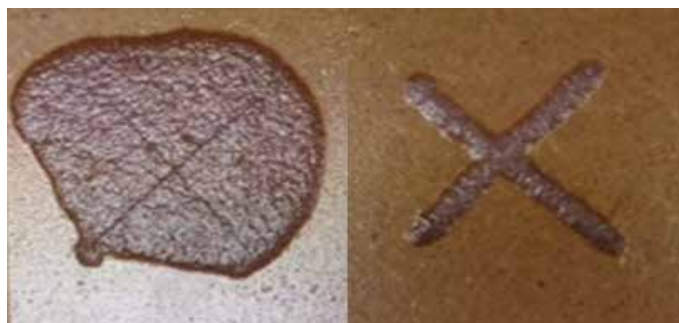
Sherwin-Williams has developed waterborne systems with exceptional resistance to liquid water and moisture vapour to meet the demands of high-humidity environments such as kitchens and bathrooms.

Sherwin-Williams new product range exhibits remarkable water resistance properties - tested by water immersion or a severe cold-check cycle.

A range of pigmented primers, topcoats, sealers and lacquers are now available for sale in Europe – customised with different properties for a variety of processes and performance conditions.

Benefits

- Waterborne system for kitchens and bathrooms.
- Protection against claims for swelling and cracking.
- Environmentally compliant - reduced VOC.
- Breakthrough system into traditional solvent borne end use.



System	Basecoat	Topcoat	Typical end use
	Pigmented system		
1.	ED1237 WB primer	EG1353 WB topcoat	Bathroom
2.	ED1237 WB primer	WH1667 WB UV topcoat	Kitchen
	Clear system		
1.	EL1130 WB sealer	EM1160 WB clear top	Bathroom
2.	EL1160 WB sealer	WM1607 WB UV clear top	Kitchen

Systems shown above provide the maximum protection against water and moisture and are a good balance of processing and resistance properties. Alternative systems for faster processing requirements are also available. Please contact the technical department for advice on the best system choice depending on processing and end use.

Since 1866, Sherwin-Williams has provided manufacturers and finishers with the coatings they need to make their products look better and last longer, while helping their operations meet productivity and sustainability goals. For both wood and general industrial markets, our innovative solutions go beyond coatings to include knowledge, tools, equipment, supplies, and industry-leading support. We're more than a coatings provider – we are Your Coating Solutions Partner.

Visit us at www.sherwin-williams.eu

SHERWIN-WILLIAMS®

© The Sherwin-Williams Company
Edition 1, 2017