



**SPÄNEX**



Consulting ■

Planning ■

Production ■

Assembly ■

Maintenance ■

# **SPÄNEX product program**

Customized system solutions from one source

safe ■ clean ■ efficient ■



## Dust extraction.

A comprehensive range of compact dust extractors up to an air capacity of 10,000 m<sup>3</sup>/h is available. Whether extraction is required for one or multiple processing machines, SPÄNEX has the right solution.



SMU 25 dust extractor

The range of dust extractors includes 11 models, starting with the SMU 12, with an extraction nozzle size of 125 mm and a volumetric extraction flow of 1,200 m<sup>3</sup>/h through to the SMU 100 with an extraction nozzle diameter of 355 mm and a volumetric extraction flow of 10,000 m<sup>3</sup>/h.

Filling containers with plastic lining bags, briquetting presses or mechanical or pneumatic transport systems are available as disposal options.



SMU 100 dust extractor with briquetting press



## Transport.

SPÄNEX has manufactured radial fans for more than 60 years. The air capacity spans from 1,000 to 120,000 m<sup>3</sup>/h with a total pressure increase of up to 10,000 Pa. Every fan is optimally designed for each application. The volumetric flow and compression are the decisive key figures for selecting the size.



extraction fan ND 800

Whether used on the raw or clean air side, dust and chips are transported in an energy-saving manner with SPÄNEX fans. The diameter ratio and the blade design are defined based on the use. The suction capacity is adjusted to the requirements via the speed control.

All required pipes and molded parts are part of the transport system. Starting with the suction hood on the machine, the pipe components through to the duct system for returning the filtered air to the facility rooms.



pipe components

### Plus points:

- compact
  - small installation area
  - low clearance
- high extraction
- quiet, energy-saving operation
- automatic start-up of the briquetting press
- complete control system
- operator friendliness
- inspected in accordance with GS-HO-07

### Plus points:

- air capacity up to 120.000 m<sup>3</sup>/h
- total pressure increase up to 10,000 Pa
- customized fan design
- energy efficiency due to high levels of efficiency and speed-controlled drives
- low noise
- assembly-friendly, complete piping and component product range



## Filtering .

With the range of compact filters, the system is covered below a volumetric extraction flow of 100,000 m<sup>3</sup>/h. The modular filter system with integrated fans impresses with its high capacity in the smallest of spaces. The energy-efficient, high-capacity fans in conjunction with the speed control ensure energy-efficient operation. Another plus point is the very good price-to-performance ratio.



compact filters

For industrial uses, we offer large filters in series or compact designs with filter surfaces of up to 1,500 m<sup>2</sup>.

The filter medium and cleaning system (vibration, reverse air or jet pulse) vary depending on the task. In addition, the mode of operation is adapted to the requirements of the case and the system is operated intermittently or continuously.



line filter with reverse-air cleaning

### Plus points:

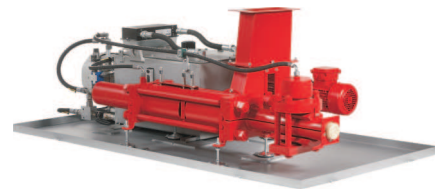
- modular system - optimum adaptation to the case of demand
- extraction fan can be installed
- with and without pre-separation chamber
- vibration, compressed air and reverse-air cleaning
- vacuum or positive pressure technology
- continuous or intermittent mode of operation
- residual dust concentration in the return air < 0.1



## Briquetting .

SPÄNEX has manufactured briquetting presses for more than 60 years. More than 3,000 machines in practical use are proof of the impressive technology, high-quality standard and the trust of the customers from several sectors (wood, plastic, biomass, paper and metal).

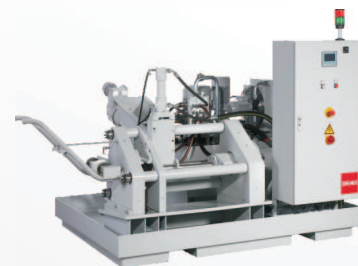
The optimum machine for each use case can be selected from a variety of series.



briquetting press SHB RS

| series         | capacity<br>in kg/h | throughput<br>in m <sup>3</sup> /h |
|----------------|---------------------|------------------------------------|
| SHB 40 - 55    | 40 - 70             | 0,2 - 0,5                          |
| SHB RS 55 - 70 | 50 - 90             | 0,3 - 0,7                          |
| SHB 60 - 250   | 60 - 250            | 0,5 - 2,0                          |
| SHB HP M       | 40 - 2.500          | 0,3 - 6,0                          |

We perform test pressings for our customers. The data is documented and provided to our customers with sample briquettes.



briquetting press SHB HPM

### Plus points:

- solid design
- compact design
- energy-optimized hydraulic systems
- application-dependent compression pressures (SHB HP series)
- high throughput capacity
- fully-automatic 24-hour operation (except SHB 40)
- complete system solutions



# Shredding .

SPÄNEX

Use your waste wood for energy recovery. The compact and reliable wood shredders were specially developed for shredding old and waste wood. Regardless of whether solid wood, chipboard panels, MDF panels, veneers, etc., the waste wood is efficiently and economically shredded with the SPÄNEX shredders, UNTHA system.

Depending on the use, two different shredding systems are available:

- single-shaft shredders
- four-shaft shredders



LR series  
single-shaft shredder

RS series  
four-shaft shredder



The result is homogeneous, pneumatic and mechanically transportable chippings. The granulate can be briquetted or directly burned in the heating system.

## Complete system solutions from A to Z

... from extraction, briquetting, transport, filtering, painting through to shredding

SPÄNEX disposal systems offer you complete systems, starting from collecting the chips or dust at the machine, pneumatic transport with subsequent separation in the filtering system, return of the clean air to the facility rooms and recycling of chips/dusts as briquettes and/or valuable fuels in a combustion plant.

Based on the task, the SPÄNEX field service will develop the optimum system concept for each individual case, plan the system and develop, present and explain the offer. The optimal solution for the respective application case can be selected and implemented using items from the diverse range of products. The essential components are manufactured by SPÄNEX and form closed system solutions without interface problems.

It's a long path from planning to a finished system. SPÄNEX will stand by you during every phase with its expertise and experience from the implementation of several thousand systems. The systems are set up by our assembly technicians and commissioned by our customer service technicians. Our service, in conjunction with maintenance agreements, ensures the long service life and reliable operation of the systems.

## Plus points:

- high throughput
- low power requirement
- robust and reliable
- tried-and-tested cutting systems
- automatic impurities detection and shut-off
- automatic start-up if the motor overloads
- 3-year warranty or 2,000 operating hours





## Painting .

For extraction of overspray when painting and for the inlet air supply, SPANEX offers innovative and economically-efficient system technology for a wide variety of applications.



extraction wall

The highest value is placed on the energy efficiency of the system when there are large quantities of air. With the help of the heat recovery system, the thermal capacity requirement is reduced. Intelligent control technology ensures constant working conditions with its speed-controlled drive.

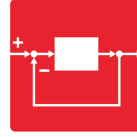


underfloor extraction

These days, the air supply units are usually equipped with a heat recovery system.

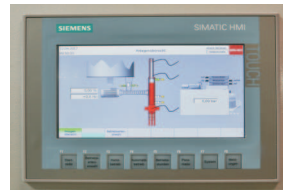


air supply unit



## Controls .

One of our core competencies is customized control and regulation concepts for each individual system. The basic requirement for safe and efficient operation, the functional, automatic control and regulation has been adapted to the requirements of the customer-side project.



switch board briquetting press

After planning and programming in the engineering department, we manufacture the circuitry using tried-and-tested components from well-known manufacturers.



switch board exhaust unit

### Our range of products:

- dry spray walls
- underfloor extraction systems
- combined systems
- water-sprinkled spray walls
- air supply units with and without heat recovery
- control and regulation technology
- extraction tables and walls for grinding work

### Plus points:

- in-house development and production
- complete control system solutions
- many years of experience
- competent consultation
- services from the manufacturer
- direct availability of spare parts
- retrofitting of existing systems

# SPÄNEX-your partner

## Perfect down to the last detail

- In-house sheet processing and in-house mechanical engineering

The components of the dust extractor, filter units and the briquetting presses are manufactured using the most modern machines. Due to the production depth, our high quality demands and those of our customers are reliably ensured.

- Accessories

Only accessories (gearbox motors, pneumatic hydraulic parts, etc.) from leading manufacturers that meet our quality requirements are used. The experience from delivering more than 1,000 filter systems and more than 3,000 briquetting presses has proven that this is the right concept.



### Practical examples



## SPÄNEX GmbH

Luft-, Energie- und Umwelttechnik  
 Otto-Brenner-Straße 6  
 D-37170 Uslar  
 phone: +49 (0) 5571 304-0  
 fax: +49 (0) 5571 304-111  
 info@spaenex.de  
 www.spaenex.de

safe ■ clean ■ efficient ■