

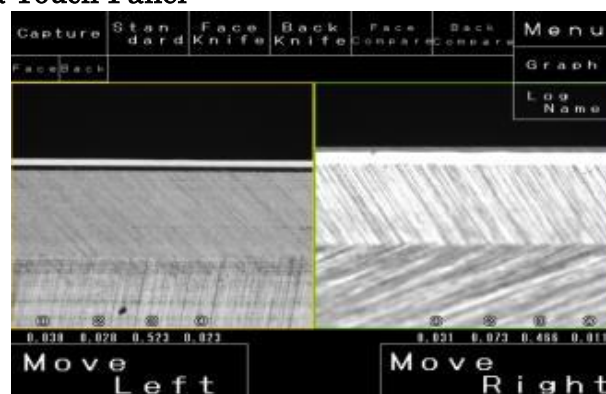
ARTESA II TAIHEI Super Precision Knife Honing Machine - Latest Model V95-AA -



Forming data setting on the Touch panel

	1st HONING	2nd HONING	3rd HONING	4th HONING	5th HONING	6th HONING
FACE						
HONING ANGLE	38° 0'	28° 0'	31° 0'	38° 0'	0° 0'	0° 0'
SELECT STONE	#1000	#1000	#1000	#1000	#1000	#1000
AIR PRESSURE	10	30	10	5	0	0
ROTATION SPEED	150	700	400	100	0	0
PASS TIME	8	12	6	4	0	0
BACK						
HONING ANGLE	15° 0'	5° 0'	8° 0'	12° 0'	0° 0'	0° 0'
SELECT STONE	#1000	#1000	#1000	#1000	#1000	#1000
AIR PRESSURE	10	30	10	5	0	0
ROTATION SPEED	150	500	400	100	0	0
PASS TIME	8	12	6	4	0	0

The knife edge sharp can be inspected by a microscope camera and displayed on a Touch Panel



- * Easy Programming and memory storage of various combinations of honing profiles.
- * Any combination can be selected simply by pressing on the touch panel.
(Max. 39 honing profiles can be memory and preset.)

Standard Specification :-

V95-AA ARTESA II Available knife size.

Length : 700mm - 2,750mm/ 3,320mm/ 4,750mm
 Width : 125mm - 210mm
 Thickness : 12mm- 25mm

〒485-0084 TAIHEI MACHINERY WORKS, LTD.
 No.955-8, Miyamae, Irukadeshinden, Komaki-City, Aichi-Pref, Japan.
 TEL(0568)73-6421
 FAX(0568)75-2805

E-mail Sales@taihei-ss.co.jp

Home page address : <http://www.taihei-ss.co.jp>