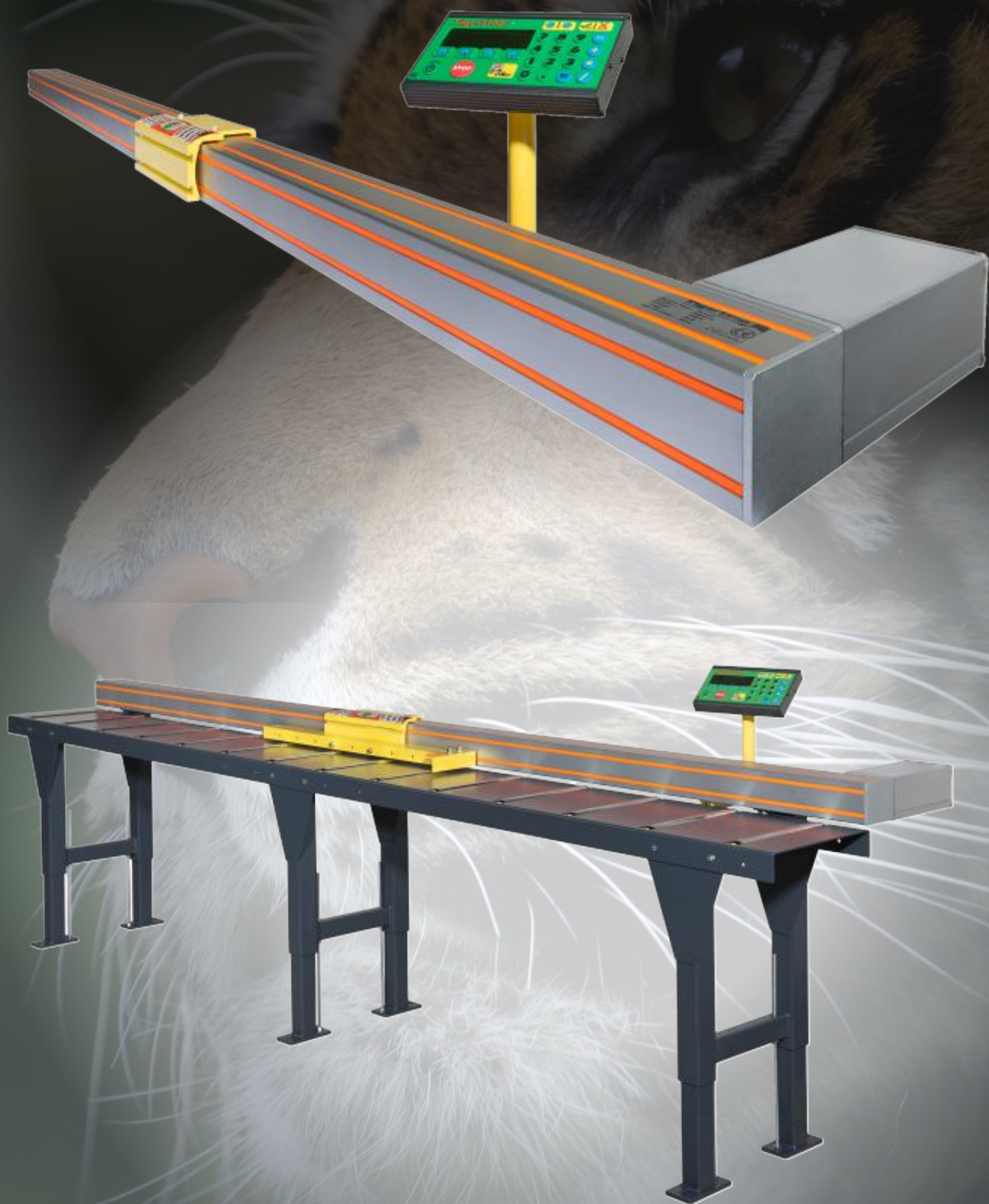
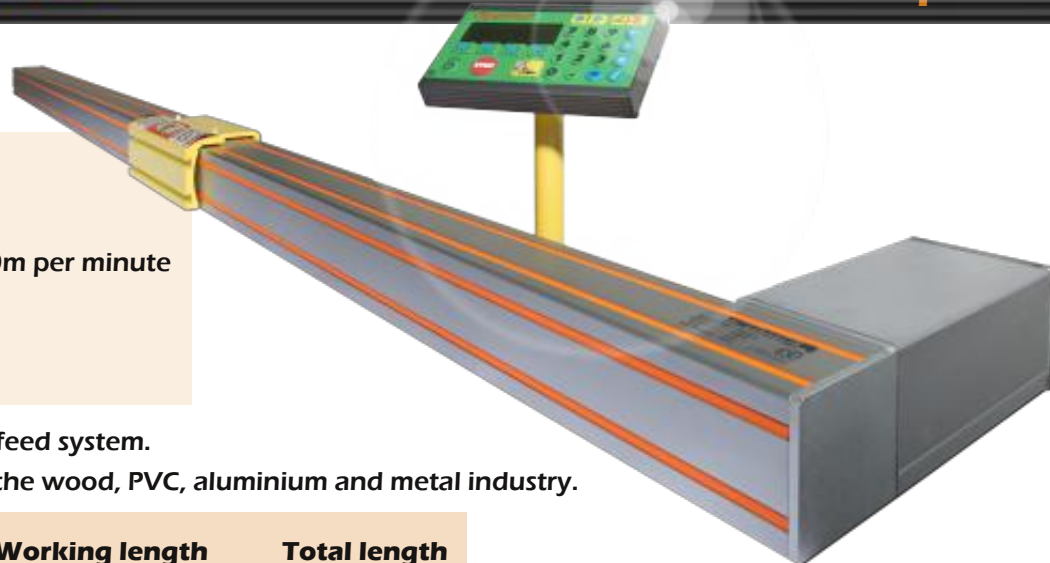


TigerStop

fast and accurate... every time.





Profile dimension	100 x 100mm
Voltage	220 Volt 50Hz
Power	0,6KW Servo Drive
Positioning speed	up to maximum 60m per minute
Repeatability	0,1 mm
Push	up to 100Kg
Display	4 lines LCD

Automatic programmable stop and push feed system.
 Easy and quick to mount on machines in the wood, PVC, aluminium and metal industry.

Article	Name	Working length	Total length
10000	TigerStop 2	2.0 m	2.6 m
10001	TigerStop 3	3.0 m	3.7 m
10002	TigerStop 4	4.0 m	4.6 m
10003	TigerStop 4.8	4.85 m	5.4 m
10004	TigerStop 6.8	6.85 m	7.4 m
10005	TigerStop 8.5	8.5 m	9.1 m

Special lengths are available upon request.
 The price for a shortened Tigerstop is the price for the next standard length up.

We advise to mount the Tigerstop on our roller or flat top tables (see page 2 tables).
 The Tigerstop can also be mounted on existing tables if they meet certain conditions.
 For mounting on existing tables you can use our mounting brackets (see page 3).

Software	Standard equipment:	Hardware
<ul style="list-style-type: none"> • Stop and pusher function • Memory capacity for 100 cut lists • Increment function • Adjustable speed acceleration and deceleration • Build in calculator 		<ul style="list-style-type: none"> • Control panel • Tilttable stop • Guide profile • Control stand for control panel • Bolts and T/nuts for mounting • DM safety switch

Recommended options:



10050	Extended Arm (100 cm) Easy to attach to the flip away stop. Positions the material to Zero Point Used for Set Point and Push Feed functions Other lengths available on request
10051	Spring Buffer (70 / 100 cm) To facilitate the handling of heavier pieces of material. Choice between 2 standard lengths to position to Zero Point (longer available on request)

Tables

Closed Roller tables



For model	Total length	370mm wide table		520mm wide table	
		Roller length 350mm Ø 50mm	Centre distance: 280mm	Roller length 500mm Ø 50mm	Centre distance: 280mm
		Article number		Article Number	
1 roller table	1,85m	10006		10006B5	
TigerStop 2	2.5m	10007		10007B5	
TigerStop 3	3.7m	10008		10008B5	
TigerStop 4	4.3m	10009		10009B5	
TigerStop 4.8	5.4m	10010		10010B5	
TigerStop 6.8	7.4m	10011		10011B5	
TigerStop 8.5	9.1m	10012		10012B5	

Closed roller table for high security with powder coating Ral 7016
Height adjustable form 70 - 100cm Higher tables available on request.

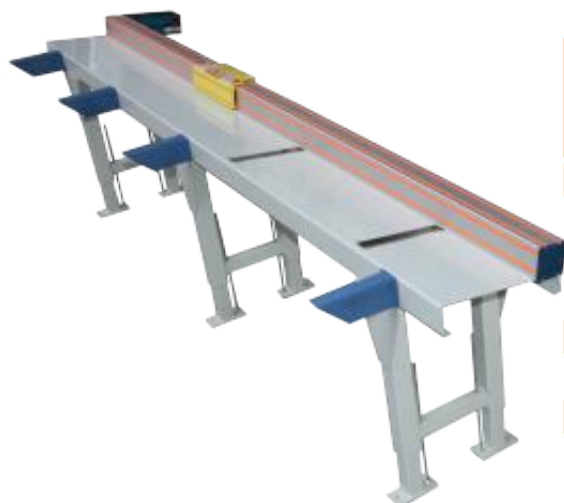
Flat top table



For model	Total length	Width	
		370mm	520mm
1 flat top table	1,85m	10013	10013B5
TigerStop 2	2.5m	10014	10014B5
TigerStop 3	3.7m	10015	10015B5
TigerStop 4	4.3m	10016	10016B5
TigerStop 4.8	5.4m	10017	10017B5
TigerStop 6.8	7.4m	10018	10018B5
TigerStop 8.5	9.1m	10019	10019B5

Closed roller table for high security with powder coating Ral 7016
Height adjustable form 70 - 100cm Higher tables available on request.

Inclined tables with or without tiltable rollers



For model	Total length	Width	
		325mm	600mm (suitable for TSL)
1 inclined table	1,85m	10225	10225B5
TigerStop 3	2.9m	10226	
TigerStop 3-4	3.7m	10227	10227B5
TigerStop 4.8	4.9m	10228	
TigerStop 4.8	5.4m	10229	10229B5
TigerStop 6.8	6.6m	10230	
TigerStop 6.8	7,4m	10231	10231B5
TigerStop 8.5	9.1m	10233	10233B5

8 degrees inclined with powder coating Ral 7035
Height adjustable form 75-100cm Higher tables available on request.

Support brackets for reception of material before processing are available (see page 3 art 60072).

Table Accessories

Articl Number



60072 **Support brackets**

For reception of material before processing.
To be mounted on the front of the inclined tables.



10052 **Attachment Bracket**

Used to stabilize the TigerStop for mounting to existing tables or structures. They are not required when you purchase a TigerStop feed table.



60117 **Support legs for Single-end tenoning machine**

Minimum 2 pieces needed.

Side fence for in/out feed tables

Aluminium L profile 100x60mm



10403	1m
1040318	1.85m
1040325	2,5m
1040337	3,7m
1040348	4,3m
1040354	5,4m

When ordering tables without a Tigerstop the side fence is not included.

Arms for stop and push feed applications

Article Number



10050 **Extended Arm (100 cm)**

Easy to attach to the flip away stop. Positions the material to Zero Point.

Used for Set Point and Push Feed functions.

Other lengths available on request.



10051 **Spring Buffer (70 / 100 cm)**

To facilitate the handling of heavier pieces of material.

Choice between 2 standard lengths to position to Zero Point (longer available on request).



10053 **Pneumatic Tilttable arm**

Add-on for the Tigerstop when using a driven roller table. Includes a manual switch valve.

(Electrical valve and sensors available on request).



10050D **Extended arm with double stop plate left and right**

Best ordered with software option double zero point.



10050P **Stop arm for Single-end tenoning**

With height adjustable stop.

Accessories: IT solutions

Software



10060 Automatic Tiger machine start Interlock
 Software option with the required 24 Volt DC in and output signals, to start an existing machine and the automatic push feed cycle. Includes required cables and external connection box.



10061 Tiger Set Communications Software
 Allows control of TigerStop from PLC or PC via RS 232 port. Software is pre-programmed in the controller.



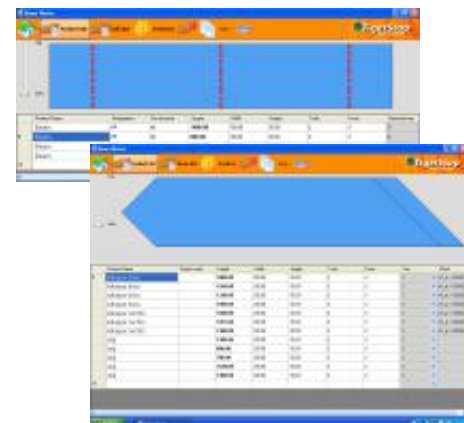
10062 TigerStop Optimizer Software packages
 Allows for optimisation of material through user adjustable modes to provide the best yield of materials. The software is pre-programmed in the controller.



10063 Tiger Optimaster for the wood industry
 Software developed specifically for managing the cuts of hard woods, this program optimises head and tail cuts of weathered pieces for window frame fabrication.



10064 WFM Tigerlink Version 5 Workflow manager
 Do you use design and cut listing software or Excel? Combine cut lists or download multiple cut lists to multiple TigerStop cut list locations simultaneously. Works on windows XP or Windows 7.



10254 BW Beamworks Multitool Software
 Software for machining pieces with different successive tools like saws, drills, mills. All this in combination with the TigerStop automated push feed device.
 A simple product list is used to direct the TigerStop for positioning and relay machinery activation. Importing files from excel (or other tabulation programs) and some draw programs is possible. (Requires Tiger Set communications Software)

Hardware



10065 Short Haul Modem Set

If your computer is further than 15 meters from the TigerStop, you need a short haul modem set to insure good communication between them. The customer has to supply the cable (in red on image) between the modems.



10518 Ethernet to serial converter

To drive one or two TigerStop through your LAN



10066 Bar code Scanner

Send the Tigerstop to position by scanning a bar code with the required length. Includes required cables, etc..

Label Printer and Software package

Prints text or bar-codes with text labels for your parts. Automatically strips self-adhesive labels for easy application to your finished pieces. (Requires Tigeroptimizer)

10067 2" 50mm

100670101 4" 100mm



10263 Telemeter

Electronic measuring gauge to measure lengths transmitting them wireless to the TigerStop.

Direct control over the TigerStop, or storage of lengths into the list memory is possible. Expansion with TigerStop level 3 software for optimizing lengths available.

Transmitter/receiver on 8 channels. Allowing up to 8 telemeters to be used simultaneously in the same factory floor.

Measuring lengths up to 2800mm.

Includes two mounting brackets

10265 Telemeter mounting brackets

Extra Telemeter mounting brackets set.



Programmable stop



Profile dimensions	70 x 70 mm
Precision	0,2 mm
Voltage	220 Volt 50 Hz
Speed	40 m/min
Programs	Up to 10 positions per list, for 10 lists
Display	LCD

10500	profile length	3000 mm
	working length	2500 mm

10501	profile length	4100 mm
	working length	3600 mm

Accessories

for mobile sawing installations



10502	Fixing Kit
	2 Clamps

10503	Foot
-------	-------------

Tables for SawGear

- Width 240mm
- Rollers 200mm long at 50mm Diameter
- Height adjustable from 80cm up to 115cm

Roller tables



10510 for Sawgear 3 3 meter

10511 for Sawgear 4 4 meter

10512 single roller table 2 meter

Flat top tables



10505 for SawGear 3 3 meter

10506 for SawGear 4 4 meter

10507 single flat top table 2 meter

TigerStop Fences

Programmable stop

TigerFence



Profile dimension	108 x 108mm
Accuracy	0,1mm
Requirements	220 Volt 50Hz
Positioning speed	30 -250mm/s
Programs	100 cutting or drill patterns each with up to 100 positions
Display	4 line high contrast LCD

10184 Working length 1550mm

Tiger CrossCut



Profile dimension	108 x 108mm
Accuracy	0,1mm
Requirements	220 Volt 50Hz
Positioning speed	30 - 250mm/sec
Programs	100 cutting or drill patterns each with up to 100 positions
Display	4 line high contrast LCD

10185 Working length Stop 1: 1625 mm
Stop 2: 3150 mm

TSL HEAVY DUTY Automated Stop and Programmable Pusher



The TigerStop TSL is guided by a steel strip linked to a steel C profile, 180mm fence height.

Power transmission is done through an tooth gear drive.

Available in lengths from 2m up to 24 meter.



Example:

Standard length	10 meters	
Working length	9,2 meters	
Profile dimension	180 mm high (steel)	
Positioning speed	Max. 40min/min	Article number
Accuracy	+/- 0.4mm	10164
Power	1,1 kW DC Servo drive	
Requirements	220 Volt 50 Hz	
Programs	100 cutting or drill patterns or 100 memory positions	

Option

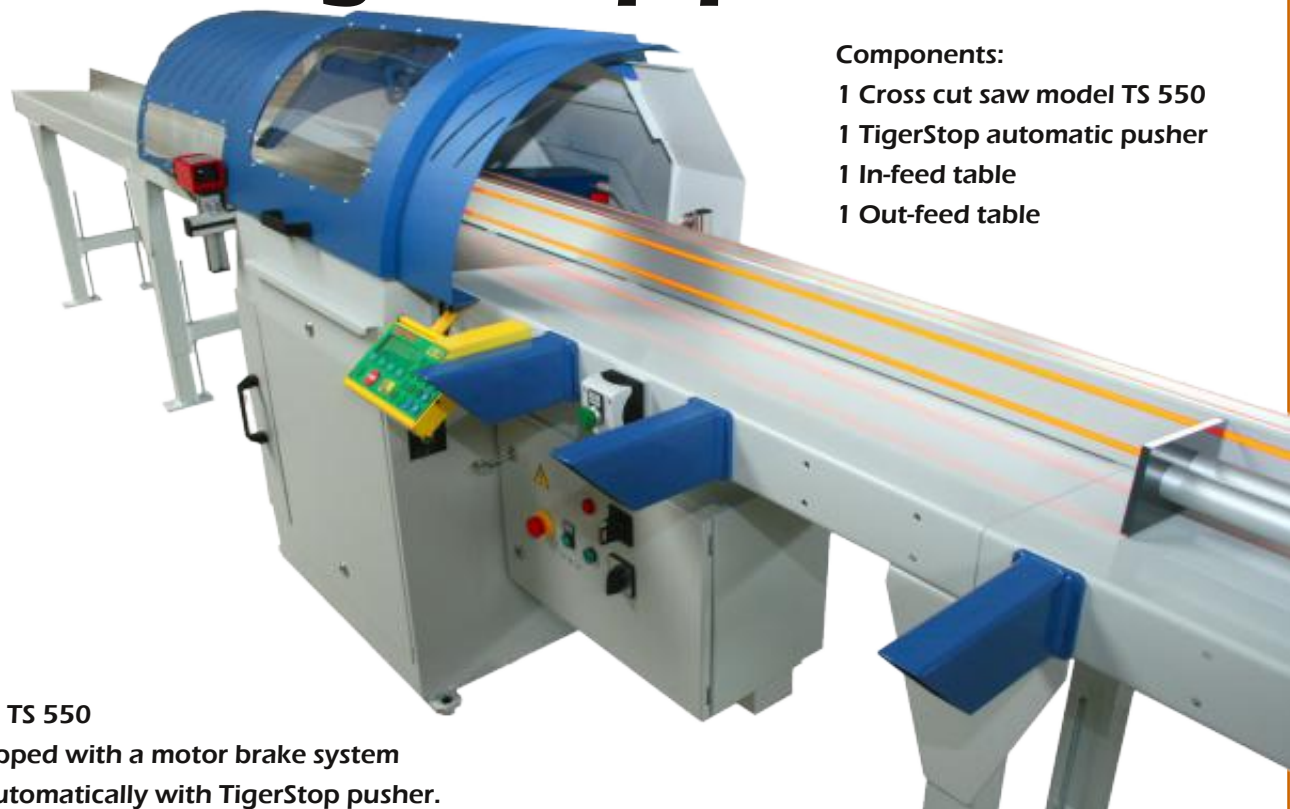
1 meter extension or reduction in length



TigerStop installations



Push-feed Cross-cut saw TS 550 with TigerStop pusher



- Components:
- 1 Cross cut saw model TS 550
 - 1 TigerStop automatic pusher
 - 1 In-feed table
 - 1 Out-feed table

Cross cut saw model TS 550

The machine is equipped with a motor brake system and operates fully automatically with TigerStop pusher.

Saw blade diameter	550mm or 500mm
Cutting capacity	100 x 280 mm or 150 x 150mm
Maximum cutting height	150mm max.
Motor power	5,5Kw
Requirement	380 Volt 50Hz
Working height	950mm
Saw stroke	Pneumatic adjustable
Diameter of dust exhaust	1xØ100mm

TS 550 with TigerStop Automatic pusher left or right-hand

TigerStop 4	length of work piece	3,0m
	length of table	3,7m
Tigerstop 4.8	length of work piece	4,0m
	length of table	5,0m
TigerStop 6.8	length of work piece	6,0m
	length of table	7,0m

Flat top out-feed table
Angled at 8 degrees (standard table 2,9m)
Longer table available on request

Option: HandyScan

Patented detecting device by laser line for optimising and defecting.

Pushfeed Cross-cut saw TS 800 with TigerStop pusher



- Components:
 1 Cross cut saw model TS 800
 1 TigerStop Automatic pusher
 1 In-feed table
 1 Out-feed table

Cross cut saw model TS 800

The machine is equipped with a motor brake system and works with 2 hand push button operation or fully automatic with TigerStop pusher

Saw blade diameter	550mm or 500mm
Cutting capacity	80 x 700 mm and 50 x 800mm
Maximum cutting height	Max.180mm
Motor power	5,5Kw
Requirement	380 Volt 50Hz
Working height	950mm
Saw stroke	Hydro-Pneumatic adjustable speed
Diameter of dust exhaust	1xØ100mm and 1xØ120mm

TS800 with TigerStop Automatic pusher left or right-hand

TigerStop 6,8	length of work piece	6.0m
	length of table	7.0m
Tigerstop TSL 10	length of work piece	8.2m
	length of table	10m
Other Tigerstops and tables	length of work piece	Up to 18 meter

Flat top out-feed table

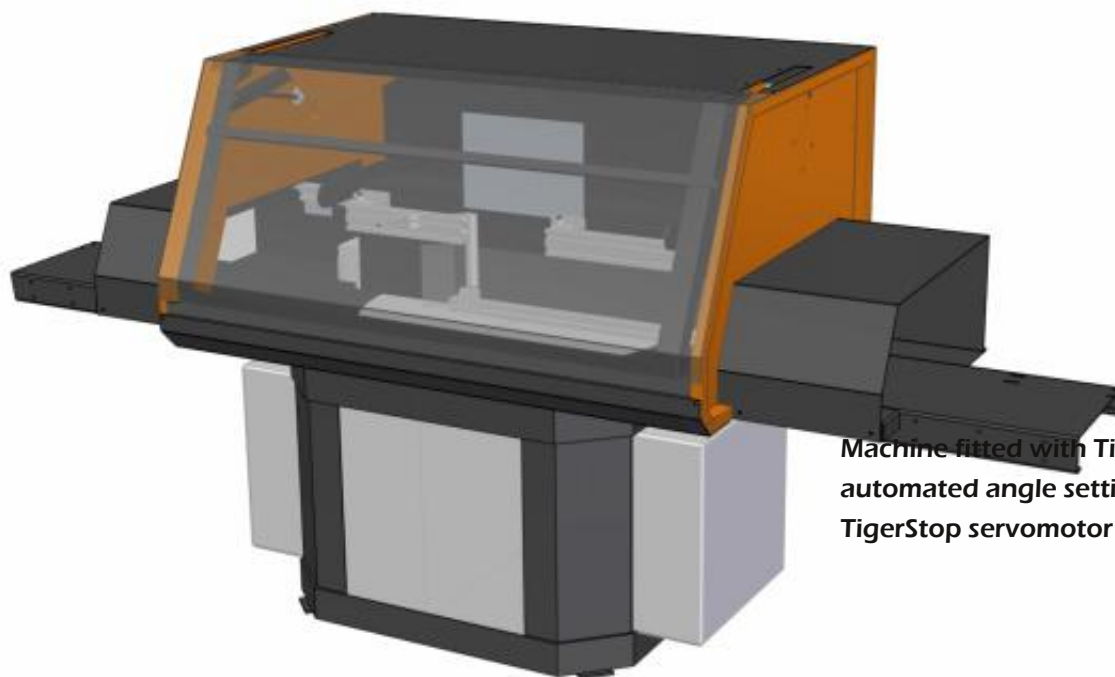
Inclined at 8 degrees (standard table 2,9m)

Other Tigerstops and tables available on request

Option: HandyScan

Patented detecting device by laser line for optimising and defecting

Up-stroke angle cross-cutting saw model UKA 600



Machine fitted with TigerDrive:
automated angle setting using a
TigerStop servomotor

Maximum cutting height	170 mm
Saw blade diameter	About 350 mm at 90 degrees (75 x 350mm , 100 x 300mm)
Saw-blade Diameter	950mm
Cutting angles	20– 90– 20 degrees or 30 – 90 – 30 degrees in full automated use
Motor power	5,5Kw
Requirements	380 Volt 50Hz
Saw stroke	Pneumatic adjustable

UKA 600 with TigerStop TSL Automatic pusher left or right-hand

Tigerstop 4.8	length of work piece	4,0m
	length of table	5,4m
TigerStop 6.8	length of work piece	6,0m
	length of table	7,4m
TigerStop 8.5	length of work piece	7,5m
	length of table	9,1m

Option: PC with Tiger Angle/ Beamworks

PC with TigerAngle programme, computer and computer cabinet

To control angle on the saw and Tigerstop pusher simultaneously

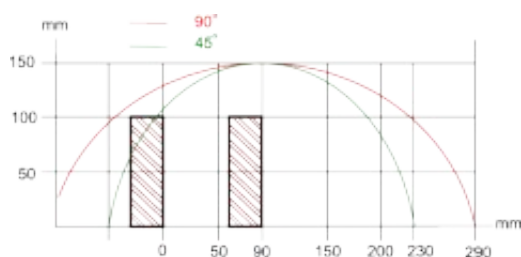
TSA 420

Cross-cut angle saw with TigerStop pusher for aluminium and plastics/synthetics



TSA 420

Cutting height	Max 145 mm
Cutting width	180mm at 90 degrees (50 to 130mm high)
Cutting angles	30– 90– 45 degrees
Motor power	2,2Kw
Voltage	400 Volt 50Hz
Saw drive	Hydro-pneumatic



Accessories

Extra tables see page 1 and 2

Also available with automatic cycle system, safety guards etc.

Details

The sawing mechanism is mounted under a rotating table, this table rotates on its central axis thus maintaining the zero point.

Setting the angle is done manually, several notches for angles are built in the table to make this process easy, precise and fast.

Includes sprinkler system, hood with safety switch and horizontal and vertical clamps.



Drilling installation with pusher system TS63/125D

TigerStop drilling installation TS63/125D with direct drive

Suited for metal, aluminium, PVC or wood.

Machine functions fully automatically using a Tigerstop positioning system



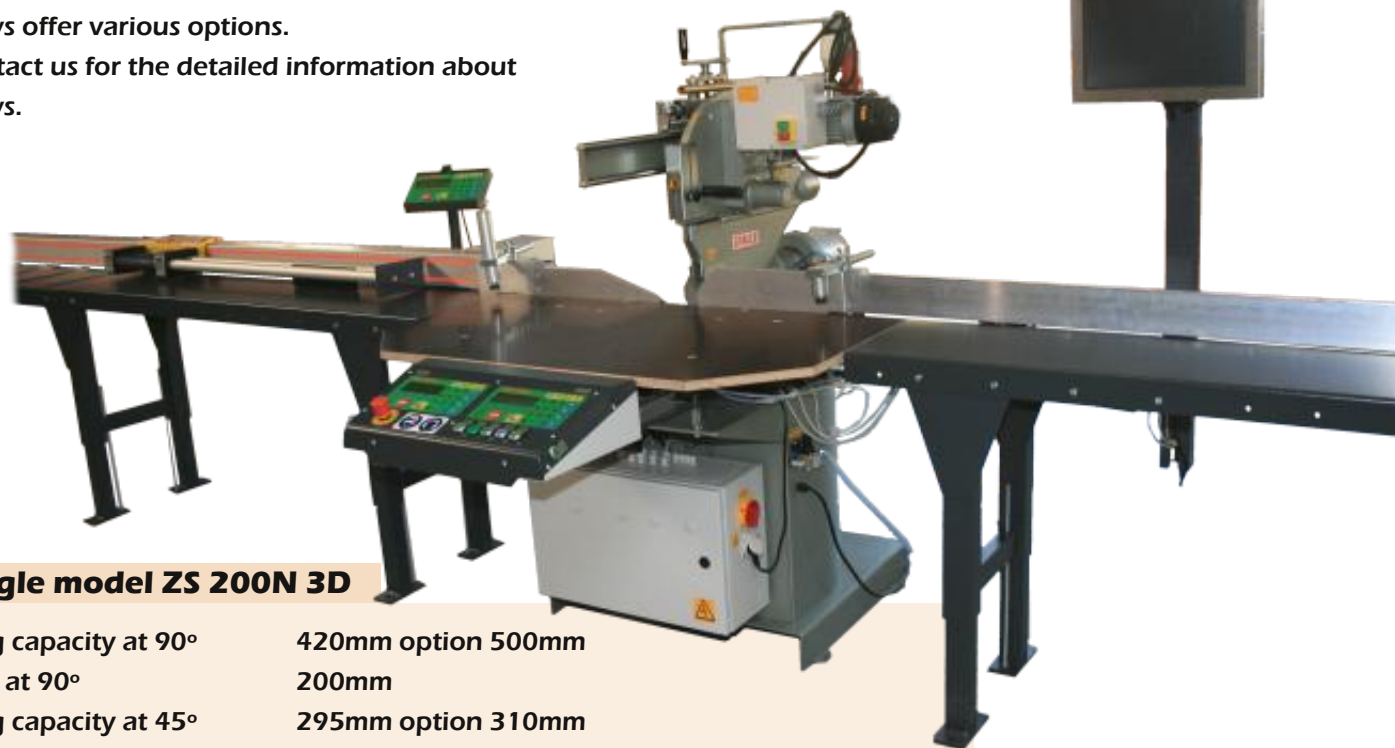
Drill-head	one vertically or two vertically or one vertically and one horizontally
Motor power	1,1Kw (either 1,5 / 2,2Kw)
Speed	1400 rpm (choice between 750 and 3000rpm)
Bore	Standard 125mm or 160mm (200mm maximum)
Bore capacity	About 35mm in wood 11mm in metal ST50 13mm in steel pipes 16mm in aluminium
Drill drive	Pneumatic with speed regulator and hydraulic brakes
Drill power	1120N at 6 bar
Waste disposal	1xØ100mm
Drill take up	Drill-head UNF ½-20 at standard performance
Setting of the Y-axis	With double linear 200mm rails (or 300mm). With manual setting and digital display or using a pneumatic cylinder to switch between two positions using Beamworks Multitool Software.

**Due to the many options available on this machine we advise calling us
for solutions offered by this product.**

Tiger Angle

Graule saws offer various options.

Please contact us for the detailed information about Graule saws.



Tiger Angle model ZS 200N 3D

Sawing capacity at 90°	420mm option 500mm
Height at 90°	200mm
Sawing capacity at 45°	295mm option 310mm
Height at 45° inclined	140mm
Horizontal angles	45-90-25°
Vertical angles	60-90-30°

TigerStop 6.8
In-feed table 7,4m
Out-feed table 3,7m

With option TigerDrive to automate horizontal and vertical inclination (3D)
PC with TigerAngle/Beamworks software and pneumatic clamping mechanism.

Tiger Angle model ZS 170N 2D

Sawing capacity at 90°	450mm (longer on request)
Height at 90°	170mm
Sawing capacity at 45°	310mm
Height at 45° inclined	115mm
Horizontal angles	45-90-25°
Vertical angles	45-90-60° (manually)

TigerStop 6.8
Infeed table 7,4m
Outfeed table 3,7m

With option TigerDrive to automate horizontal inclination(2D)
PC with TigerAngle/Beamworks software and pneumatic clamping mechanism.

Options (among others)

Tigerdrive automated horizontal inclination

TigerDrive automated vertical inclination (only for ZS200N)

PC with TigerAngle/Beamworks software import function etc

Tiger Labelprinter

Pneumatic clamping mechanism. 2x vertical

TigerStop with Graule radial arm saw



The Graule saws offer various options, therefore please contact us for the detailed price list on the Graule saws.

Graule Radial arm Saw

Type ZS 135	Art# 10171
Motor 400 V	2 or 3 kW
RPM	3800/ min
Sawing capacity at 90°	440 mm
at 45°	300 mm
Height at 90°	135 mm
Horizontal angles	45-90-25°
Saw blade Ø	350 mm

Type ZS 135 N	Art# 10129
Motor 400 V	2 or 3 kW
RPM	3800/ min
Sawing capacity at 90°	460 mm
at 45°	315 mm
Height at 90°	135 mm
Height at 45° inclined	92 mm
Horizontal angles	45-90-25°
Vertical angles	90-45°
Saw blade Ø	350 mm

Type ZS 170	Art# 10130
Motor 400 V	2 or 3 kW
RPM	3500/ min
Sawing capacity at 90°	410 mm
at 45°	290 mm
Height at 90°	170 mm
Horizontal angles	45-90-25°
Saw blade Ø	420 mm

Type ZS 170/N	Art# 10131
Motor 400 V	2 or 3 kW
RPM	3500/ min
Sawing capacity at 90°	450 mm
at 45°	310 mm
Height at 90°	170 mm
Height at 45° inclined	115 mm
Horizontal angles	45-90-25°
Vertical angles	90-45° or 60-90-45°
Saw blade Ø	420 mm

TigerStop with Graule radial arm saw

Graule Radial arm Saw

Type ZS-200

Art# 10455

Motor 400 V	3 or 5 kW
RPM	2800/min
Sawing capacity at 90°	420 mm
at 45°	295 mm
Height at 90°	200 mm
Horizontal angles	45-90-25°
Saw blade Ø	520 mm

Type ZS-200 N

Art# 10111

Motor 400 V	3 or 5 kW
RPM	2800/min
Sawing capacity at 90°	420 mm
at 45°	295 mm
Height at 90°	200 mm
Height at 45° inclined	140 mm
Horizontal angles	45-90-25°
Vertical angles	60-90-30°
Saw blade Ø	520 mm



TigerStop with Graule cutter - notching

Graule cutter-notcher, for notching wood under a 90° angle,

Provided with a delignite wood table.

Available with fixed or moving cutter

Accessories:

Hydraulic brakes for the saw stroke

Pneumatic clamping, 2x horizontal / 2x vertical

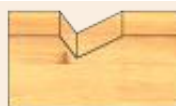
Type QNF

Motor 400 V 50hz	2 or 3 kW
Cutter depth	Ca 300 mm
Cutter width	45 or 60mm
Cutter offset from table	160mm (higher on request)
Max cutter size	Ø 250 mm
Cutter boring	Ø 40 mm



Type QNF – W

Horizontal angles	90-45° (40-90-45° on request)
-------------------	----------------------------------



Type QNF-WN

Vertical angles	90-45°
-----------------	--------



TigerStop also makes available its expertise building tailor-made solutions:

Krank-shaft loading station

For some more raw power we developed this pneumatic drive system to load 6 to 8 meter long slats automatically



Belt loading station

There have been several custom made belt-driven machines, So much so that we are thinking of making this a standard TigerStop accessory



TigerStop also makes available its expertise building tailor-made solutions:

Dual Graule

Two Graule circular saws mounted on a platform.

One of the Graules is mounted on a fixed table,

while the other one is moved along the installation along the table axis

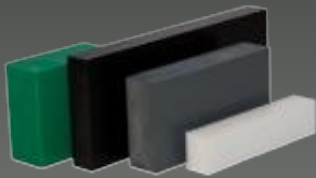
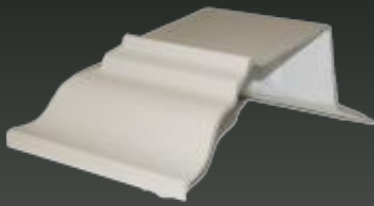


Punch machine



TigerStop

fast and accurate... every time.



TigerStop BV
Postbus 11
NL 7640 AA Wierden
Nederland

Tel: +31 546 57 51 71
Fax: +31 546 57 77 22

info@tigerstop.nl
www.tigerstop.eu