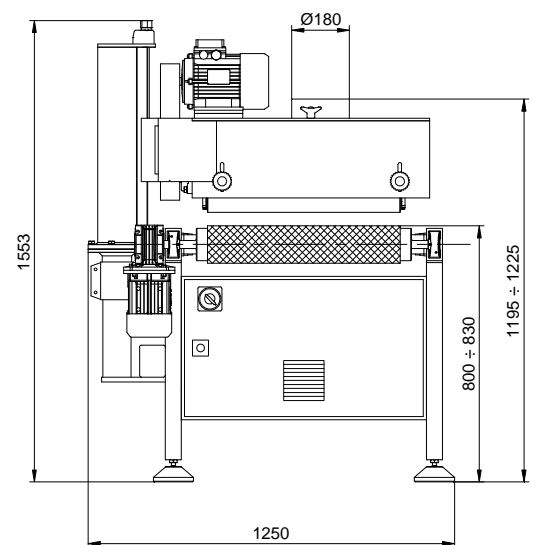


LEVIGATRICE
SANDER
PONCEUSE
KANTENSCHLEIF-
MASCHINE
LIJADORA



MOD.
SPO-600



**BRUSHING MACHINE WITH 2 UNITS
FOR SANDING, DENIBBING AND STRUCTURING OF WOOD.
SUITABLE FOR SOLID WOOD, VENEER AND MDF.**

WORKING WIDTH	600	mm
MAXIMUM THICKNESS OF THE WORKPIECE	330	mm
OPENING SIDED FOR THE DOUBLE PASSAGE OF WIDER PIECES		
BRUSHES 90 DEGREES TO FEED OR WITH INCLINATION	0 – 10°	
MAXIMUM DIAMETER OF BRUSHES	320	mm
STRIP SYSTEM SANDING BRUSHES AVAILABLE		
VARIABLE SPEED OF BRUSHES BY 2 INVERTERS	180 - 600	rpm
FORWARD/REVERSE SANDING UNITS		
MANUAL HEIGHT ADJUSTMENT WITH HANDWHEEL	0 – 330	mm
VARIABLE SPEED CONVEYOR BELT	3 – 15	m/min
HEIGHT OF THE WORKTABLE WITH ADJUSTABLE FEET	800 - 850	mm
HEIGHT ADJUSTABLE BRUSHES		
EXTRACTION (DIAMETER)	2 x 180	mm
EMERGENCY STOP BUTTON		
BRUSH MOTOR (EACH HEAD)	2 x 4	Kw
CONVEYOR BELT MOTOR	0,55	Kw
NET WEIGHT	700	Kg
DIMENSIONS	2150	mm LENGHT
	1250	mm WIDTH
	1553	mm HEIGHT
CE NORMS WITH MANUAL IN ENGLISH		



Volpato S.R.L.
Via Colombo 18, 35011 Campodarsego (PD) Italy
Tel 0039 (0) 49 5564039 / Fax 0039 (0) 49 9200960
Info@Volpatolasm.com www.volpatolasm.com