

# CNC 6 Sides Boring Machine NCB2412



\* Due to the continuous improvements of our products, some machine changes may apply. The specifications are subject to change without notice.

## Description:

- modern control system based on Windows System
- complete drilling in six side surface and grooving on top and bottom in one process
- equipped with double beam with respective power 3.5 kW spindle and gantry frame to ensure high rigidity and a wider processing range
- efficient processing due to high speed dual grippers
- central lubrication system ensures machine operation and extended service life



## Equipment

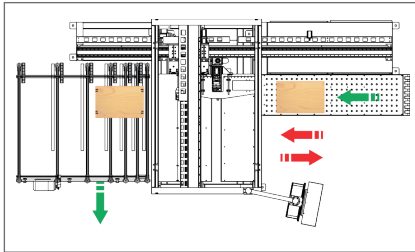
### Body frame

- compact structure design to save space
- rectangular steel structure to ensure strong and durable fuselage

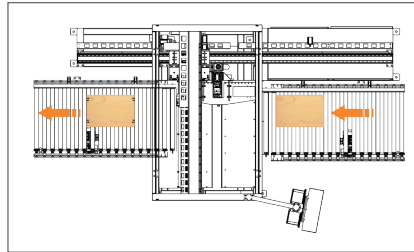


### Air float table (option)

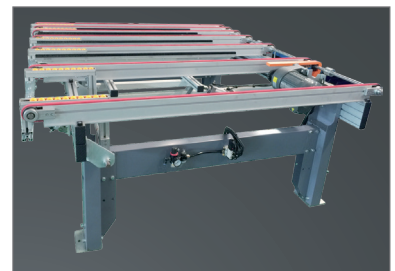
- air floating table made of HPL+steel helps to reduce scrapes and scratches on panel surface



Feed-in at front,  
feed-out at front or side



Feed-in at front,  
feed-out at rear



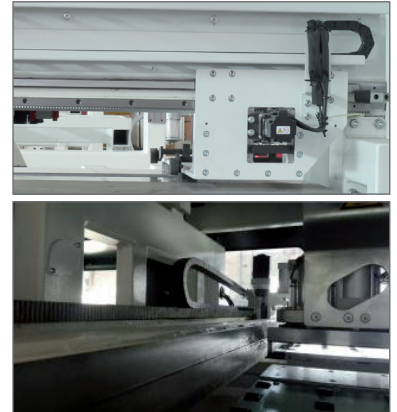
### Dual grippers guiding rail

- fast moving long guiding rail to ensure high processing speed
- dual clampers and auto side alignment guarantee precision and stability in panel processing



### Transmission mode

- X axis: rack and pinion
- Y axis: rack and pinion
- Z axis: ball screw



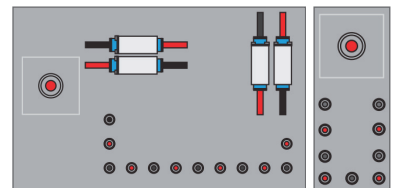
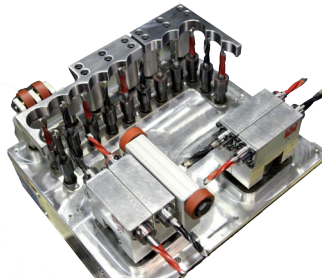
### Servo motor

- all spindles are driven by servo motor
- ensures faster and stable processing



### Processing unit

- equipped with 2 drilling blocks and 2 x 3.5 kW main spindles:
  - top processing unit:
    - 1 x 3.5 kW main spindle
    - vertical drills: 12
    - horizontal drills: 8
  - bottom processing unit:
    - 1 x 3.5 kW main spindle
    - vertical drill: 9



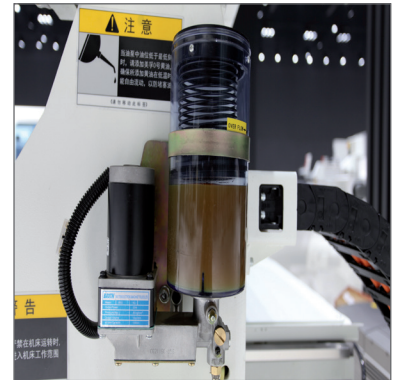
### Operational panel

- IPC
- Windows operating system
- OSAI control system
- brand PC controller
- 17 inch LCD
- configure 5 USB ports



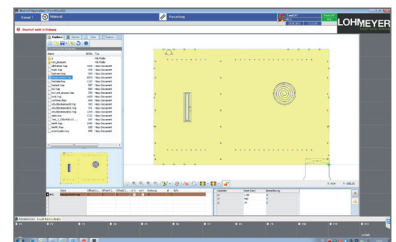
### Automatic lubrication

- equipped with central lubrication system
- each moving parts is lubricated automatically



### Professional operating software

- OSAI control system
- most of the furniture making softwares on the market can be linked up with (such as wcc, ingo etc.)



### Scanning device

- scanning gun, perfect docking with furniture making software without adjustment



## Technical Data

<b>Workpiece dimensions</b>	length	220-2,550 mm
	width	250-1,200 mm
	thickness	12-50 mm
<b>Processing stroke</b>	X axis	2,400 mm
	Y axis	1,200 mm
	Z axis	70 mm
<b>Working table</b>	type	air float table
	texture	HPL+steel
<b>Max. travelling speed</b>	X axis	110 m/min
	Y axis	75 m/min
	U axis	110 m/min
	Z axis	30 m/min
<b>Main spindle</b>	no. of main spindle	2
	power	2 x 3.5 kW
	chuck specification	ER25
	rotating speed	18,000 rpm
<b>Drilling block</b>	vertical drills unit (top side)	12
	vertical drills unit (bottom side)	9
	horizontal drills unit	8 (X 2x2, Y 2x2)
	max diameter of drills	35 mm
	drills distance	32 mm
	rotating speed	4,000 rpm
	drillstock diameter	10 mm
<b>Compressed air</b>	air consumption	0.6-0.7 MPa
<b>Dust extraction</b>	suction inlet quantity	2
	pipe diameter	lower: 125 mm x 1, upper: 150 mm x 1
	required suction speed	28 m/s
<b>Discharging mode</b>	standard	air bearing table (length 1,500 mm)
<b>Air blower</b>	power	2 kW
	air intake diameter	60 mm
<b>Power supply</b>	power	19.4 kW
	frequency	50 Hz
	voltage	380 V, 3 phases
<b>Machine dimension</b>	dimensions	5,900 x 2,640 x 2,100 mm
	weight	3,500 kg