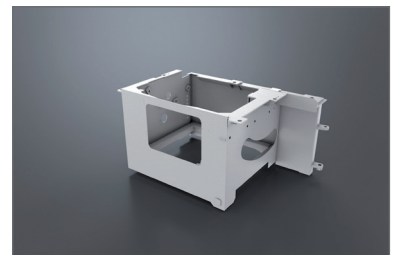


Sliding Table Saw FKS 350 IQ

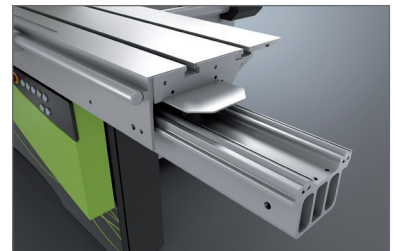


Equipment

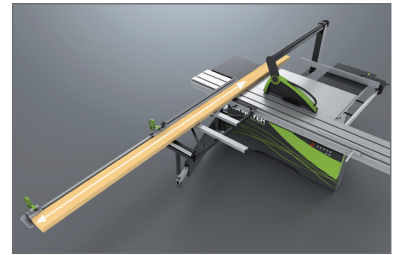
The robust **base frame** provides a solid foundation to accommodate the core components sliding table, saw aggregate and operator terminal.



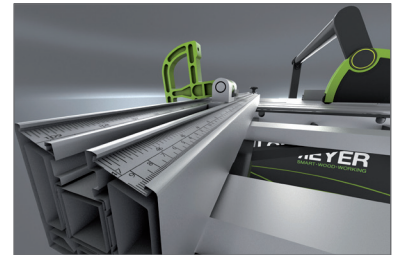
Due to its hardened round bars, the **sliding table** 3,200 mm for a maximum cutting length of 3,000 mm provides a precise and durable system which is operating maintenance-free.



The **cross cut fence with telescopic device** is designed for cuts up to 3,200 mm and 90° guarantee.

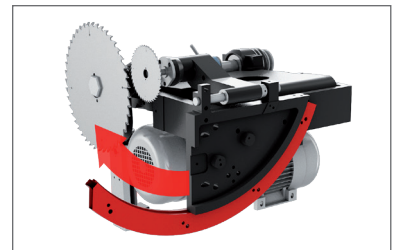
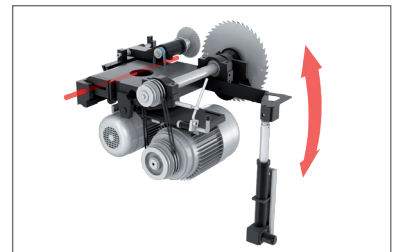


The inclined **scales** facilitate the accurate reading of the measurements. The gap-free folding units are easy to move. The **fence ruler** is removable and can be positioned on both sides of the cross table.



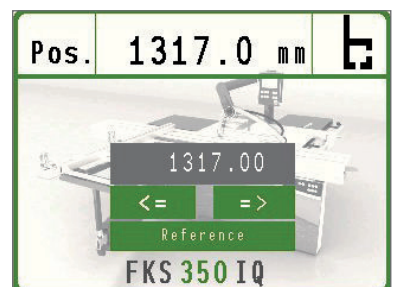
Saw aggregate

- Cutting height max. 105 mm
- Saw blade diameter max. 350 mm
- The electrical height adjustment and electrical tilting unit for angle adjustment with its smart leverage system ensures an extended service life of the saw blade.
- Motor: 5.5 KW
- RPM: 5,200 / 3,800, manually adjustable
- Scoring unit with electrical height adjustment and manual side movement, 9,000 RPM



Further equipment

- Eye level controller terminal
- Electrical movable rip fence
- One sided mitre fence



Weight

- approx. 1,100 kg

Electric Equipment

- Voltage 400 V – 3 Phase – 50 HZ

Security and Safety

- CE Regulation according to the EC Machinery Directive

Documentation

- Documentation and Maintenance Instructions in print and CD-ROM version
-

Options:

The **double sided mitre fence** of Lohmeyer Sliding Table Saws facilitates precise cuts of marked pieces and reduces splintering. The design is compact, weighing a mere 12 kg inclusive of the splitting wedge and the wall mounting.



Motor 7.5 kW equipped with:

- frequency converter
- soft start
- electronic brake

