

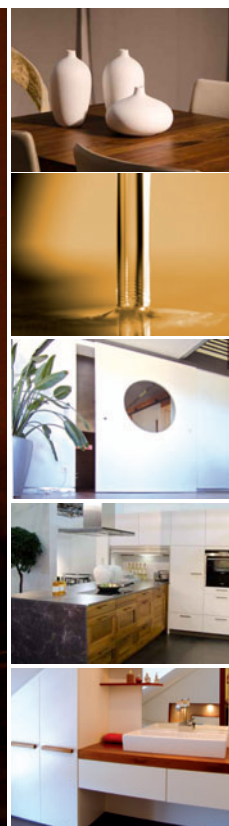


**ADVANCED**

**BASIC**

**ECONOMIC**

- large range of capacity
- pre-mounted ready for operation and tested
- plug & play concept
- fully automatic recipe control



## IFA COMAPCT SOLUTIONS

... as individual as your requirements

### IFA

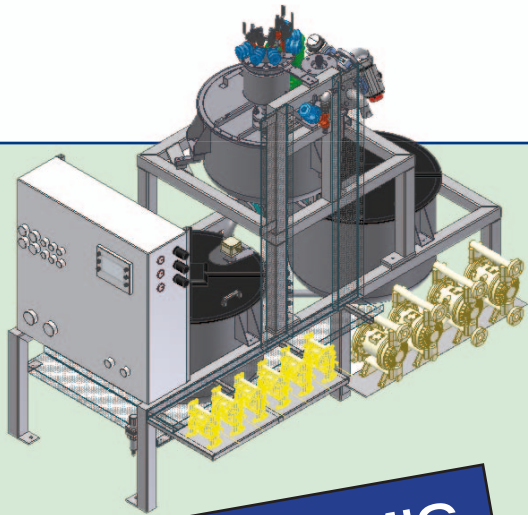
Engineering  
Development  
Construction  
Production  
Dispatch  
Service

Globally present –  
world-wide excellent

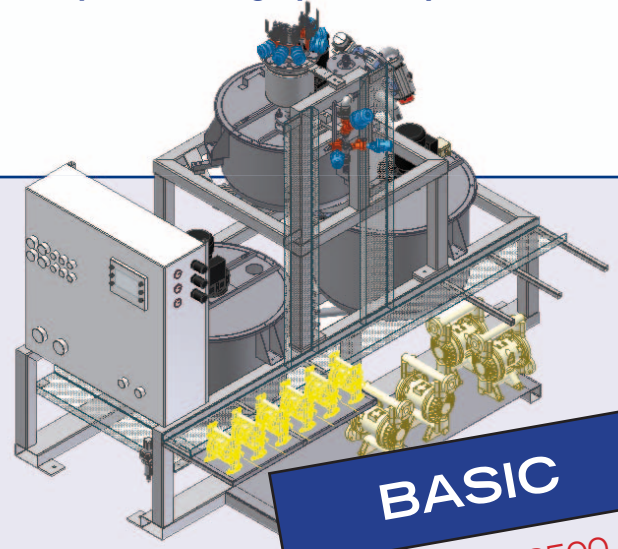


# Profit by our experience! We have more than 30 year experience of fully automatic weighing, mixing and metering systems

The IFA compact units are complete, pre-mounted ready for operation, weighing, mixing and metering plants for the production of up to 10 additive components and up to 4 resin components. The resin circulation system designed by IFA, supplies the entire system. It is possible to add up to 3 separate consumers. The successful compact solution line has been expanded to take into account the absolute consideration of the existing plant's environment. **Here you can design your compact unit according to your requirements.**



**ECONOMIC**  
1200 - 1500 kg / h



**BASIC**  
1500 - 2500 kg / h

## IFA CLE12210 ECONOMIC COMPACT UNIT

Low-cost solution, reliable and precise mixing system

The IFA ECONOMIC compact unit is the ideal solution for a business start-up in the impregnation industry.

With a capacity range of 1200 – 1500 kg/h per batch it is an efficient system to supply your production line in an optimal way. It is a low-cost solution and you have the possibility to upgrade the storage vessels with agitators.

### ADDITIONAL EQUIPMENT

- further agitators

## IFA CL15210 BASIC COMPACT UNIT

Efficient mixing system with the possibility to expand the system very flexibly

The IFA BASIC compact unit is a continuously designed plant with the possibility to configure it according to your request. You will get exactly the compact unit which meets your requirements. With a capacity range of 1500 – 2500 kg/h per batch this solution is everything you need for your production process.

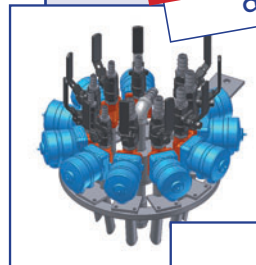
### IFA Control:

Every control unit and VisiControl is programmed by IFA (Siemens)

This competence is especially represented in:

- recipe control
- automatic dosing accuracy
- operator convenience
- good overview
- innovation

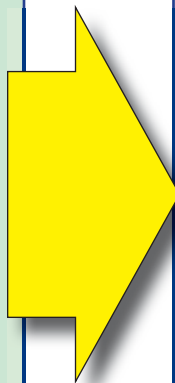
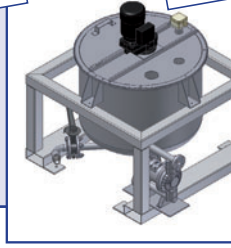
**+** additive dosing valves



**+** ... additional dosing valves



**+**



# Experience in the production of resins for resin preparation.

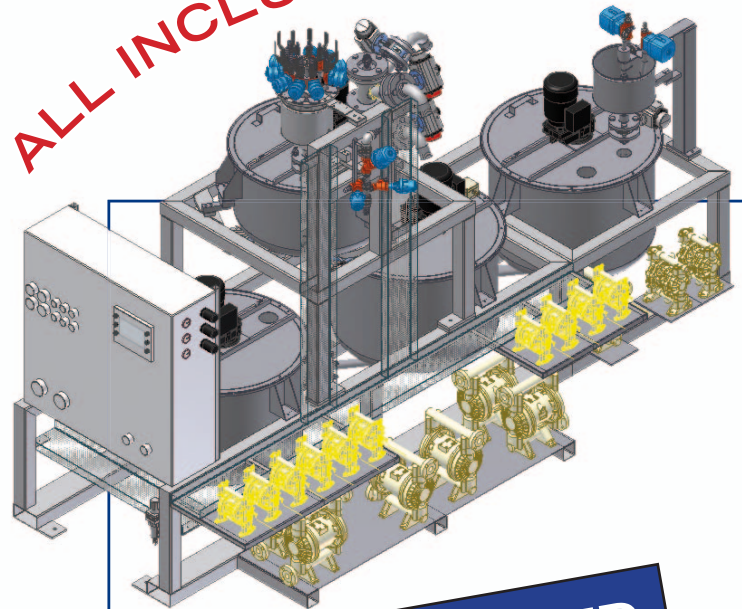


production of impregnation resin. You can dose up the impregnation unit respectively the coater circulation to grant our customers a maximum profit due to the **your requests.**

## ADDITIONAL EQUIPMENT FOR BASIC COMPACT UNIT (optional)

- additional additive dosing valves
- additional resin dosing valves
- one additional storage vessel
- colour scale for different recipes
- additional colour dosing valves
- IFA resin circulation system
- level sensor & filling valves to control your impregnation level
- data base for a digital administration of your batch records
- printer for printing the batch records (hard copy)
- data transfer to be able to export your batch records to a USB flash drive

**ALL INCLUSIVE**



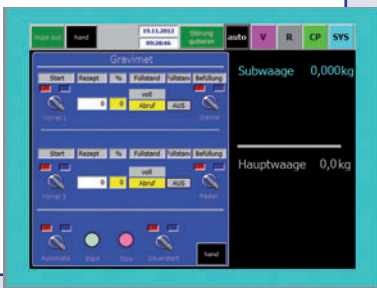
**ADVANCED**

up to 2500 kg / h

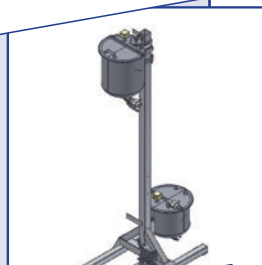
## IFA CL25316 ADVANCED COMPACT UNIT

Maximum flexibility and capacity  
With a capacity range up to 2500 kg/h per batch and using all available options the advanced compact unit is the solution which meets your highest demands and grants you the maximum flexibility. You will always keep your focus – producing your impregnation resin!

is developed and (sensors device).



**+** ... circulation unit



**+** ... 260 l storage vessel

**+** ... colour scale with 1 or 2 dosing valves





# IFA SYSTEMS GLOBALLY

## Further Delivery Programme:

- Fully automatic weighing, mixing and dosing systems for impregnating and epoxy resin
- Resin kitchen
- Glue application systems for chipboards, glue-laminated wood and MDF boards
- Machines for surface glue application
- Customized complete solutions for:
  - Coating lines and Impregnation plants
  - Paint- Lacquer and Building material industry
  - Technical synthetic material and Bulk material handling
  - Glass- and stone wool plants
  - Cullet Water
  - Batchhouse
  - Food- and Animal feed industry
- Pellet Filling Station
- Silo and Tank storage, Pipeline construction
- Big-Bag-Handling
- Control Systems and Programming (Allen Bradley, Siemens)
- HMI (WinCC, WinCC flexible, Intouch, Foxboro)
- Service (start of operation, installation, maintenance)

IFA realizes not only the designs but also their implementation.

IFA advises you already at your first considerations.

IFA designs and presents the technically and economically optimal solution.

Competent coordination and monitoring of the unit installation and assembly on location by our own specialists assures an optimal process and an in-time accomplishment of your project. Naturally we consider individual customer's requests.

## Service and support

As after sales service IFA offers training for your employees, maintenance and repairs world-wide.

We are looking forward to your tasks. Talk to us.



IFA Industrielle Wiegetechnik GmbH

Jurastraße 10 • 86641 Rain am Lech • Germany  
Tel. +49 9090 70570 16 • Fax +49 9090 70570 20  
sales@ifa-wiegetechnik.de  
www.ifa-wiegetechnik.de