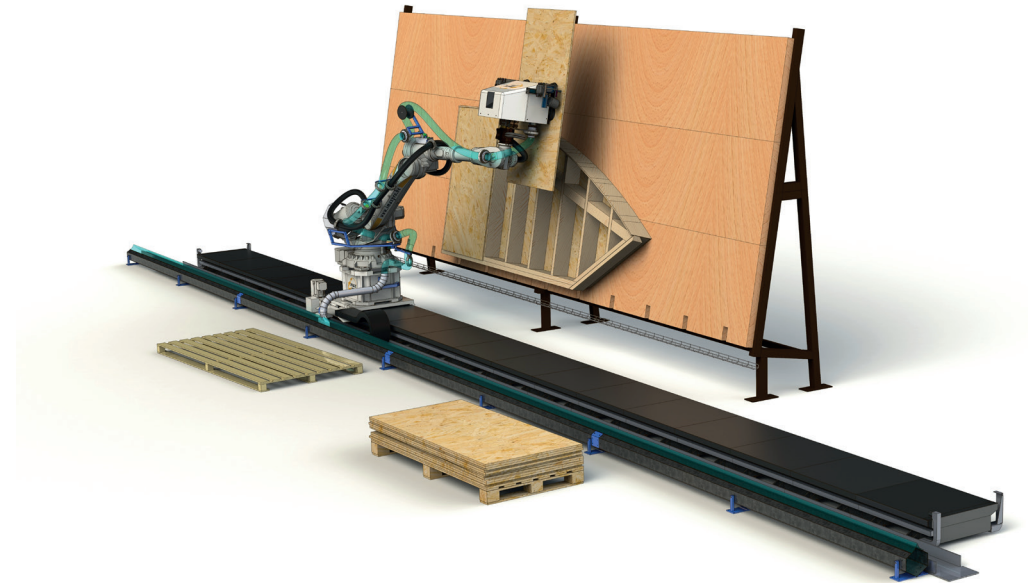




ROBOTMOB
A WHOLE FACTORY IN A BOX

~~C~~ ROBOTS
FOR YOUR
WOOD VISION



Robotic production line dedicated
to an innovative work of wood

info@imaxpro.be | www.imaxpro.be

Rue Pré Clamin 11, 4920 Harzé
Belgium

+32 4 360 97 79



COBOTS FOR YOUR WOOD VISION

A Whole Factory in A Box



Robotmob : the cobot, or collaborative robot, allows you to work with your vision of wood. It is able to change tool following its needs, to move on a track and to interact with humans through a user-friendly application.

One single robot will do the job !



The Swiss Knife

scan, align, place, nail, mill

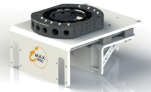
The *swiss knife*, main tool of Robotmob, is a multifunctional device which enable multiple tasks without tool changing.

Our robot is not limited to one single action.



TOOL CHANGER

IMPROVE YOUR PRODUCTION



Swiss knife, high capacity nailer, saw, grippers, high power mill, ... Thanks to its tool changer, Robotmob answers all of your needs !



SAFE ROBOTS

READY TO COLLABORATE

No worry for the workers : the robot is aware of them. They are able to work together in the same shared area and to collaborate for a better and faster work.

EASY APP

AN INTUITIVE WAY TO INTERACT



We developed a very intuitive and ergonomic application to interact with Robotmob. Collaborate with a robot has never been so easy and efficient !