

Knit wiper for precision cleaning

Sonit™ MDH is a heavy knitted fabric made of ultra-fine multifilament yarn. It is suitable both for the removal of heavy impurities and for the finest precision cleaning tasks. The slightly textured bi-component yarn makes the fabric soft and supple, which optimally adapts to the surface during the cleaning process. It is also well-absorbed for solvents. The relatively high surface weight gives the cloth a pleasant haptic impression. By means of a multi-stage decontamination process, the particulate and chemical impurities are largely removed from the knitted fabric. Sonit™ MDH is the ideal cleaning product for a variety of applications of precision cleaning in the manufacturing environment of clean working.

Characteristics

knitware from two-component multifilament yarn

Features

very high cleaning efficiency (93%), high surface mass (265 g/m²)

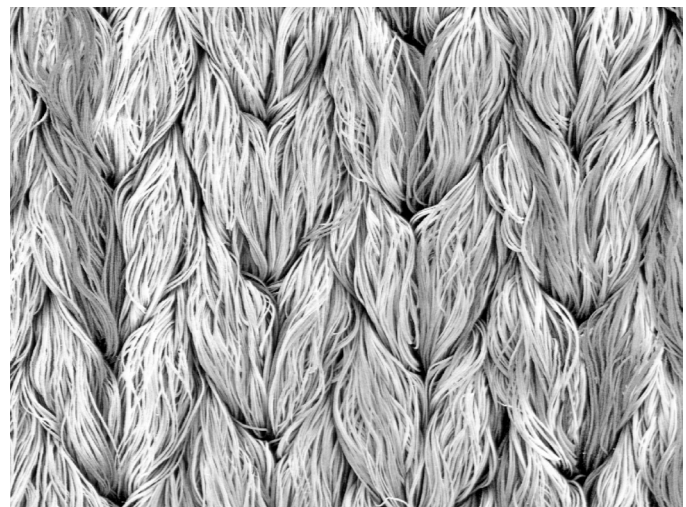
Application

precision cleaning of sensitive surfaces

General technical specification

Textile construction	knitware
Mesh / cm ²	900
Cutting	laser
Treatment	nonionic surfactant
Decontaminated	yes
Washable	not recommended
Sterilisable	possible
Stat. Quality control	yes

The structure of this cloth is clearly visible at the adjacent photomicrograph (Zeiss Axioskop V16). Due to the bulky structure and the high number of cavities, a sufficient liquid intake is achieved. Thus, the knitted fabric can also be adapted to uneven surfaces during the wiping process. The large number of fibrils ensures that the Sonit™ MDH can remove the highest degree of particulate, greasy and liquid contamination from the surface of the object.



1 mm

SEM Image Yuko Labuda

General technical data			
Mechanical parameters	Value	Unit	After method
Thickness	0.72	mm	ISO 9073-2
Surface weight	265	g/m ²	ISO 9073-1
Break load dry, longitudinal direction	775	N	ISO 9073-3
Break load dry, lateral direction	375	N	ISO 9073-3
Elongation at break, longitudinal direction	84	mm	ISO 9073-3
Elongation at break, lateral direction	226	mm	ISO 9073-3
Particle release data	Value	Unit	After method
Cleaning efficiency after Labuda measured with MULTIDRAW KTL N 16 oil	92.9	%	C&C-W-RE
Particle residue (Particle > 0.5 µm) after wiping on surface Rz 5 µm	5.4	k-Part/cm ²	C&C-W-PF-S
Particle residue (Particle > 0.5 µm) after wiping on surface Rz 39 µm	7.7	k-Part/cm ²	C&C-W-PF-S
Air particle release (at 40% relH) by Labuda Fulling Simulator Mk1	102	Part 0.5 µm/ min	
Cleanroom class according to ISO 14644-1	Cleanroom consumables cannot be specified for air purity classes		
Water absorption (DI water)	Value	Unit	After method
Total	555.6	g/m ²	
Average absorption rate in 5 s	0.5	g	C&C-W-AK-R
Average absorption rate in 60 s	0.67	g	C&C-W-AK-R
Drop absorption time	734	ms	C&C-W-EZ
Liquid residue after wet wiping	5	%	C&C-W-RF
Chemical resistance	Value	Unit	After method
Charge of break-load (long) after 2.5 min immersion into various solvents			
Dry	775	N	C&C-W-CF
Water	-4	%	C&C-W-CF
Isopropyl	-3	%	C&C-W-CF
Acetone	-6	%	C&C-W-CF

Triboelectricity at 40% relH and room temperature	Value	Unit	After method
Charge at 17 s	59.8	kV/m	CC-W-TE
Charge at 17 s at 60 s	54.1	kV/m	CC-W-TE
Discharge after 60 s	9.6	%	CC-W-TE

Anion and cation inventory in ppm measurement with capillary electrophoresis

Chloride	Fluoride	Nitrate	Nitrite	Phosphate	Sulphate		
0.1	1.011	0.114	0.084	0.118	0.045		
Ammonium	Barium	Calcium	Potassium	Lithium	Magnesium	Sodium	Strontium
0.311	-	1.135	0.094	-	0.073	0.102	-

All data in this sheet are based on measurements taken at the time of their issuance. The publication of this document does not constitute a guarantee for the continued compliance with these data. On request, you will receive current data and tolerance limits from our laboratory. Subject to change without prior notice. Errors and omissions excepted. Clear & Clean is a company certified according to the EN ISO 9001: 2008 standard. The quality assurance measures are described in our quality manual. When the data contained in this data sheet are changed, no automatic alteration is made. Clean room consumable products cannot be classified according to a clean room class for air purity according to ISO-14644-1.

Order and packing information / single packs SONIT™ MDH

Type	Dimensions in cm	Folding	Content pcs / pack	Packs per carton	Pieces per carton	Weight per carton in kg	Dimensions p. carton in cm
CC195J	10 x 10	bulk pack	200	18	3600	9.5	48 x 29 x 29
CC197P	40 x 40	flat pack	50	10	500	22	58 x 40 x 35
CC198P	20 x 20	bulk pack	50	30	1500	17.6	58 x 40 x 35

Order and packing information / special formats SONIT™ MDH

Type	Dimensions in cm	Folding	Content pcs / pack	Packs per carton	Pieces per carton	Weight per carton in kg	Dimensions p. carton in cm
CC194P-10	round Ø 10		50				
CC194P-6	round Ø 6		50				