

made  
in  
germany



Ultrasonics.Steam.Ultraclean.



Industry

## Elmasteam 8 basic

**Powerful steam jet cleaning technology for industrial applications**

- Cleaning, rinsing and drying - all with one device
- Long steam availability with 8 bar steam pressure
- Individually adjustable pressure ranges "soft" and "strong"
- Automatic "Eco-mode" saves costs and energy and is environmentally friendly
- Integrated intelligent decalcification programme
- 3 years warranty\*

[www.elma-ultrasonic.com](http://www.elma-ultrasonic.com)

# Elmasteam 8 basic

## The environmentally friendly cleaning, rinsing and drying alternative

Large quantities of oil, lubricants, polishing pastes and swarf occur frequently in industry and in workshops due to the processing with machinery. In order to clean the workpieces effectively, pre-cleaning with Elmasteam 8 basic is recommended.

With the selectable pressure modes „soft“ und „strong“, the individual regulation of moisture in the steam (wet or dry steam) and the strong heating power, the Elmasteam 8 basic is ready for even challenging cleaning tasks.

The individually adjustable Eco-mode ensures that the unit closes automatically down to 3 bar operating pressure in order to save energy and cost. Cleaned parts can be easily dried with the optional integrated compressed air function.

**Simple filling with water**  
via the integrated funnel

**Steam regulation**  
as optional function:

- "wet" - wet steam
- "dry" - dry steam

### Settings and working modes

- Steam outlet:  
Release of remaining pressure
- "Soft-" und "Strong"-modes:  
Individually adjustable pressure modes
- Lock-mode:  
Deactivates the handpiece and the foot pedal during breaks
- Service-modes:  
Integrated decalcification programme, energy-saving Eco-mode, etc.

**Flexible handpiece**  
with 2 integrated functions:

- steam or
- compressed air for drying wet parts  
(optional, if compressed air-function is integrated and connected)

**Compact design**  
Space-saving tabletop units with wall brackets



Watch the Elmasteam 8 basic movie.



**Cleaning with fixed nozzle and foot pedal**  
Ideal for working with both hands or for larger workpieces.



**Cleaning with flexible handpiece**  
Parts can be held securely (also with tweezers) and sprayed all-round quickly and effectively.



**Cleaning in the evaporating dish**  
Moisture and dirt are absorbed and can be easily disposed.

# Elmasteam 8 basic

## Quality and safety with thought-out steam cleaning technology

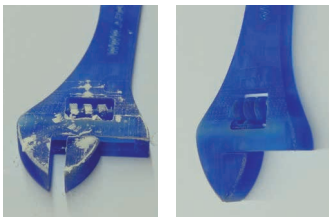
QUALITY and SAFETY are top priorities at Elma. This means, only tried and tested components and high quality materials are used. For more user safety, Elmasteam 8 basic has an integrated, automatic Lock-mode.

Water can be filled via the integrated funnel in the tank or with the optional water connection via the rear connection and the integrated pump. Regular decalcifications increase reliability in operation and the product-life of the heating. The decalcification programme can be easily started in Service-mode. Occuring sediments can be rinsed out following the operating instructions and using the rinsing set.



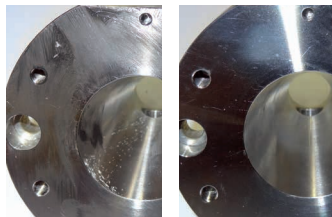
## Application examples before and after cleaning

STL components



Removal of wax

Flange



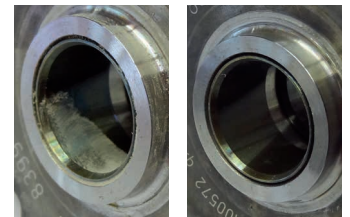
Removal of grease and silicone

Gear drive



Removal of oil and swarf

Gear drive



Removal of polishing paste

With the Elmasteam 8 basic, industrial contaminations such as pickling agents, adhesive wax and other residues can also be gently removed.

# The Elma Cleaning Concept

In the pre-cleaning stage much of the contamination is already removed or solubilized if Elmasteam 8 basic steam cleaning units are used (①). Pre-cleaned parts carry less dirt into the ultrasonic bath. Thus the cleaning cycles will be shorter and the cleaning bath can be used for a longer time (②).

Rinsing with Elmasteam 8 basic and pure water removes remaining particles and residues of the ultrasonic bath (③). Efficient drying of the parts with Elmasteam or the Elma hot-air-dryer (④) is the last step of professional parts cleaning.



## Technical Data

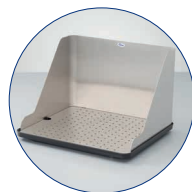
Mains voltage (V)	220 - 240	Operating pressure (bar)	8.0
Mains frequency (Hz)	50 / 60	Pressure tank volume (l)	5.0
Max. power consumption (W)	3120	Max. filling volume (l)	3.8
Steam temperature in the tank (°C)	185	Dimensions W/D/H (mm)	285 / 350 / 520
Steam temperature at the nozzle (°C)	160	Weight empty (kg)	20.0

The scope of delivery includes:

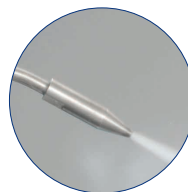


Tweezers · Sieve · Maintenance hose · Rinsing set · Tank cap

Further accessories and optional unit functions:



Evaporating dish



Spray valves



Compressed air (optional function)



Canister with filling level meter

\*3 years warranty for proper use in accordance with the operating manual. Wear parts are not covered by the warranty.

