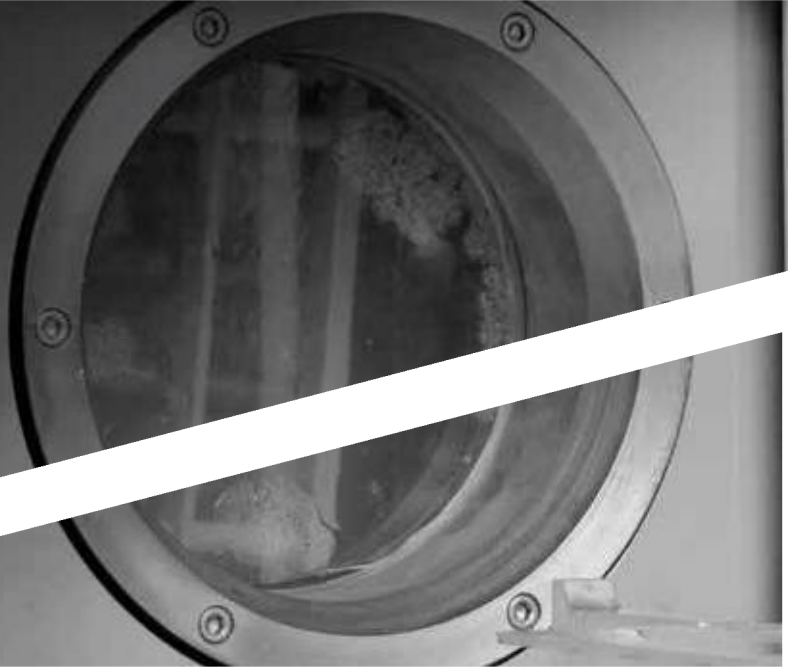


Machines with **Cabins**



These are machines with a broad area of use.

It is designed according to the geometry of the pieces to be washed, so that sensible cleaning criteria in clearing fat and burrs are met. Pieces are loaded manually or by a conveyor band. Small pieces are washed within suitable baskets placed in the cabin. After the door is closed automatically the washing process starts. The cabin gets filled with water and the drum begins to rotate and swing. In accordance with the cleaning criteria passivation and rinsing tanks are added. In addition to warm-air-drying, optional vacuum-drying and automatic degreaser can be added to obtain more effective results.





Multi-Station Ultrasonic Washing Machines

This type of machine is preferred for pieces which have high monthly or yearly production numbers. Additionally, the high cleaning criteria lead to the existence of multiple stations in such machines. Besides that, systems like ultrasonic, degreasing and vacuum units can be integrated to the tanks to increase the cleaning effect. In addition to these systems, sensible filtering processes are provided.



