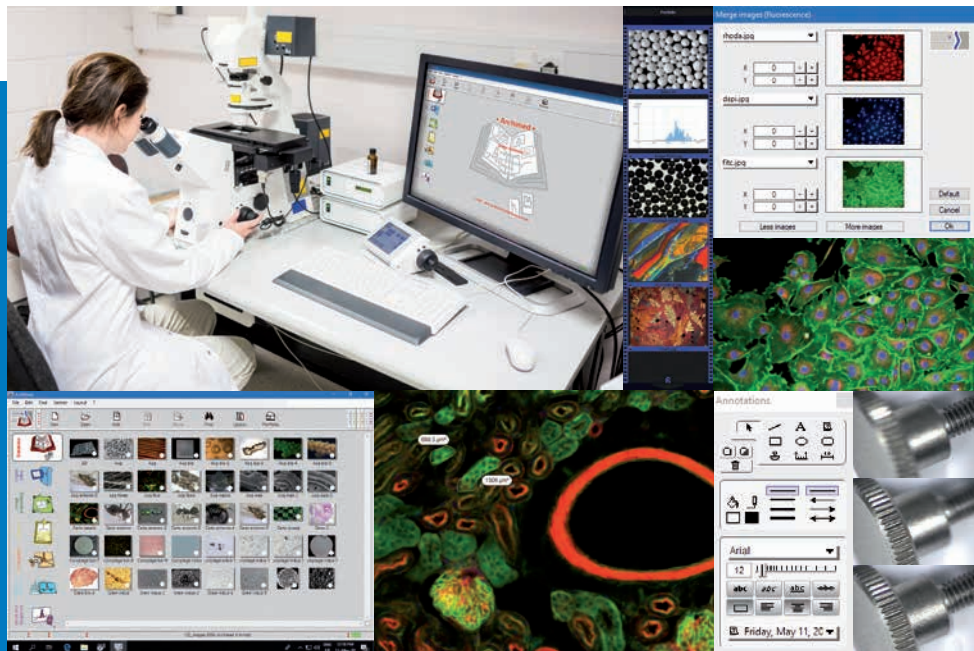


Archimed

Your microscopic analysis database

*Acquisition, processing, image, video
and analysis report archiving*



**Beyond image, video and report
database creation, Archimed
is made of several modules:**

- Database
- Image and video acquisition
- Image processing
- Measurement and annotation
- Report creation
- Extended depth of field and 3D rendering
- Cartography / panorama
- Movie and Sequence

- Multipurpose tool for the laboratory
- Client-server licence
- SQL or Microsoft Access™ compatible database
- Multi-module workspace
- Drag and drop, intuitive graphic user interface

Archimed

Archiving- Acquisition - Processing - Report

Archimed is a multipurpose application that allows you to create **database** in order to efficiently store and retrieve key components of your microscopic analyses: image, report... Beyond archiving function, Archimed includes several modules to **acquire and process** image and video: Acquisition, Report, Image processing, Extended Focus, Cartography, Movie and Sequence.

Archimed is an **integrated workspace** that includes all installed modules. Drag and drop your contents from a module to another in order to complete your processing.

CORNERSTONE MODULES

Database



Database

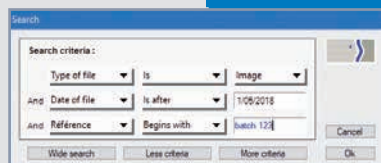
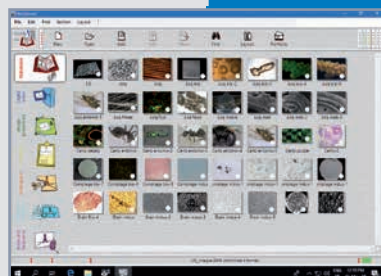
Easily create your **databases** in order to effectively store your images, videos, reports, cartographies (panoramas)...

FEATURES

- MS Access or SQL format
- Client-server license
- Archiving of image (bmp, tiff, jpeg), image sequence, cartography (panorama), video (.avi), report (.mvr format), multifocal stack
- Standard fields (creation date, path, format, thumbnail, calibration factor) + freely user-defined fields

FUNCTIONS

- Password-protected database
- Finder: by criteria and by keywords
- Easy recording of item created or modified in any Archimed module
- Management by album, adjustable thumbnails
- Creation of contact sheet layout



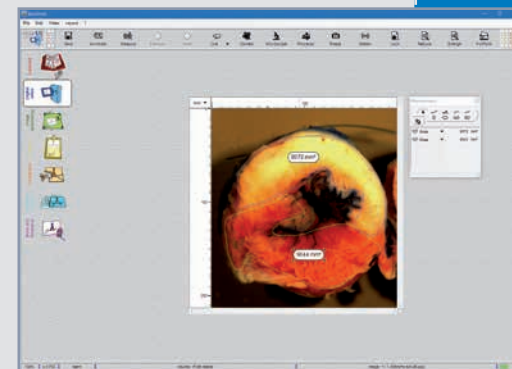
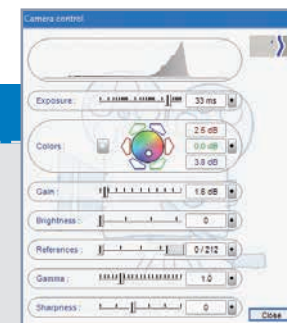
Digital video



Acquisition

Real-time video module allows rapid acquisition of image issued from various optical devices: macroscopic bench, zoom, microscope, etc.

- Integrated control of all imaging conditions such as microscope and camera settings: lighting, lens, diaphragm, filters, exposure time, calibration...
- Calibration function
- Background correction for brightfield illumination
- Live display
- Temporary storage in the portfolio
- Pre-processing: black/white, color, horizontal/vertical mirror
- Calibration, overlay of scalebar
- Fluorescence multichannel management
- Image direct recording into database



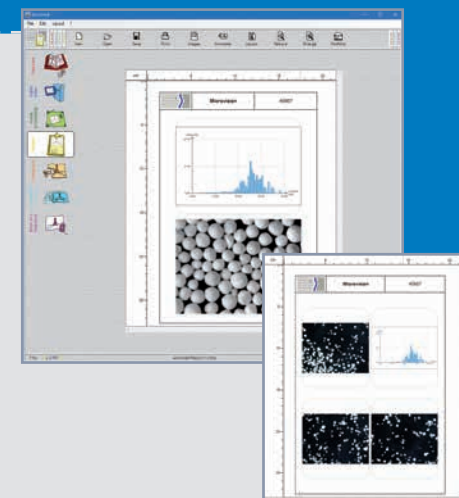
Report



Reports

Easily create **customized report** including text, image, graph, annotation.

- Printed reports creation
- Access and use of elements included in reports generated by the whole range of Microvision applications and systems
- Customizable header and footer: logo, title, date...
- Items added by drag and drop
- .pdf export
- Direct recording into database



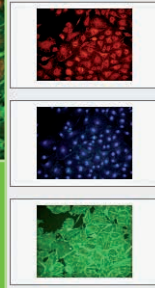
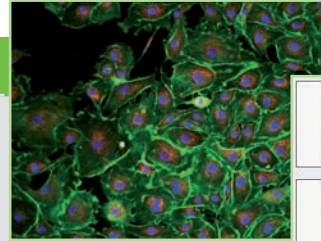
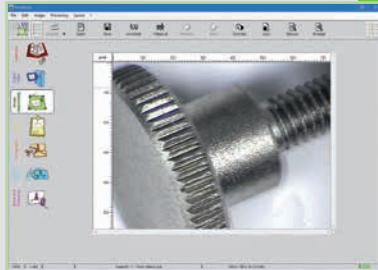
ADD-ON MODULES

Image processing



Image processing

- Calibration
- Fixed magnification
- Image processing and improvement
 - Color correction
 - Image resizing, cropping
 - Manual or automated setting: contrast, brightness, color
- Image merging
- Image comparison
- Image recording and export



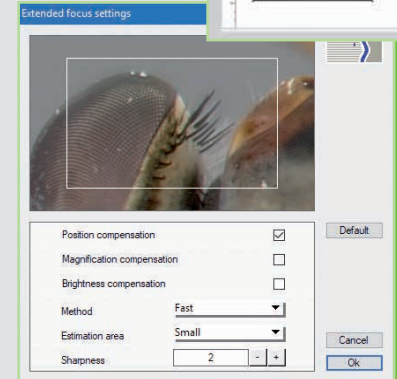
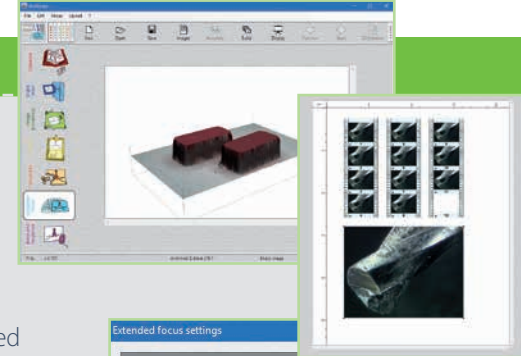
Extended Focus



Extended Focus

Extended Focus builds a sharp image from images acquired at different focal planes thus **enhancing the depth of field**.

- Multifocal stack creation
- Import and edition of multifocal stack created by Microvision acquisition systems (Cartograph, Irys, Abys)
- Automatic building of a sharp image with automated correction of magnification, brightness, position
- 3D rendering
- "Microvision ZStack" recording format
- Recording of reconstructed image



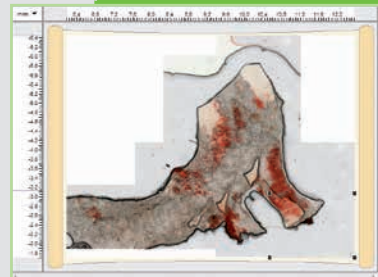
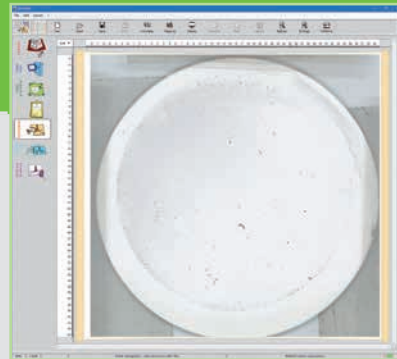
Cartography



Cartography

Create an overview from multiple fields of view, manipulate cartography (**panorama**) generated from other Microvision applications and systems.

- Image mosaic: creation of a single image from multiple fields
- Printing and recording of full cartography or separate images
- Recording of cartographic overview into a single image file
- Microvision cartography import, edition and printing
- Direct recording into database



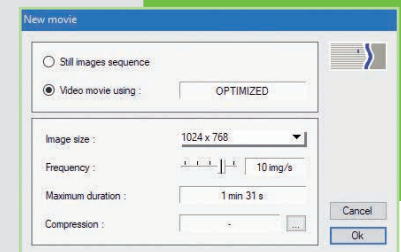
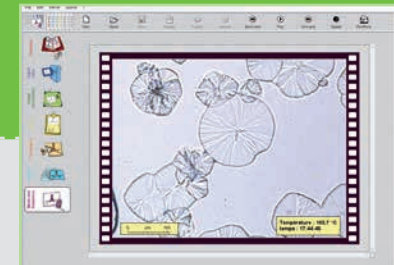
Movie and Sequence



Movie and Sequence

Create and save **animated sequences**.

- Creation of .avi video files: from live acquisition or from Replay time-lapse sessions
- Slideshow creation from images sequences
- Management of playback speed
- Various compression options
- Movie and sequence compatible with common video/media players



TOOLS

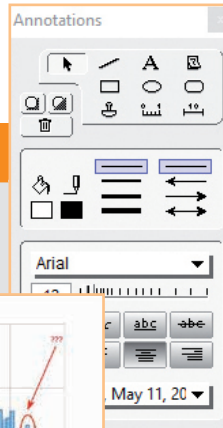


Annotate

Annotate

Annotate image or document created in the following modules: Image processing, Report, Cartography

- Add free text, date, time
- Draw rectangular or elliptical frame, scalebar graduated in real units (depends on image calibration)

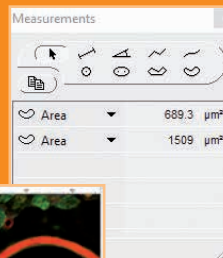
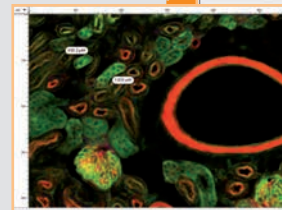


Measure

Measure

Geometric measurement toolset. Can be used in conjunction with Image processing, Cartography and Digital Video modules

- Direct measurement and labelling on the image: distance, length, diameter, area, angle...
- Direct display and modification of measurement on image
- Measurement copy/paste
- Measured values displayed as a list and superimposed on the image
- Measures on objects larger than field of view



Portfolio

Portfolio

Your temporary storage area / integrated clipboard

- At your disposal with all modules
- May contain various kind of objects: image, chart...
- Work with drag and drop



TO GO FURTHER...

BUSINESS LINE SYSTEMS

for industry and life sciences

METALLOGRAPHY

Phase analysis, inclusion, grain size, decarburization depth, dimensional measurement



PARTICLE CLEANLINESS

Particulate contamination counting for pharmaceuticals, automotive, aeronautics and spatial industries



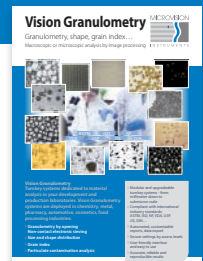
BIOSCIENCES

Histo-morphometry, counting, serum and antibiotic efficiency control, colocalization in fluorescence



GRANULOMETRY

Electronic sieving and size/shape distribution



MULTIPURPOSE SYSTEMS

- Event analysis - Time lapse
- Data safety - FDA compliance
- Whole slide / wide-field imaging



Archimed gathers, in a user friendly workspace, the whole toolset that allows processing video images from optical acquisition device up to printed report:

- Database - Acquisition - Report creation
- Image processing - Extended Focus - Cartography - Movie and Sequence

Archimed is also the perfect tool to import, manipulate, archive the whole range of image, video, stack, cartography, report... generated by your Microvision image analysis systems.



Sample and virtual mapping review (cartography/panorama) with a joystick



Compatible with Zeiss, Nikon, Olympus, Motic, Optika... devices



Compatible with digital cameras:

- Mono / tri-CCD and CMOS sensor
- Color / B&W
- USB2, USB3, IEEE interface



OS: compatible with Windows 7, 8, 8.1 and 10

RAM: 8 Go to 16 Go

Processor: iCore 7 minimum

Peripherals and interfaces: USB3 port and/or PCI express slot

By choosing Microvision, you can rely on:

- Our expertise in object characterization on microscopic and macroscopic scales - over 25 years serving the industry and life sciences
- User friendly systems developed in partnership with the key industrial players
- Strong network of resellers and international tech support

Support et services

- Maintenance contract, Technical assistance
- Advice and expertise, Training



MICROVISION



INSTRUMENTS

MICROVISION INSTRUMENTS

S.A.S with a capital of 135 000 € - RCS Evry B 388 570 046
CE 1750 - Z.I. Petite Montagne Sud
1, rue du Gévaudan - 91047 EVRY Cedex - FRANCE
Tel: +33 (0)1 69 11 15 50 - Fax: +33 (0)1 69 11 15 51
E-mail: info@microvision.fr - Website: www.microvision.fr