

RECOVERING PRECIOUS METALS



ELECTRUM RECOVERING ELECTROLYTIC

Gold
Silver
Palladium



www.siebec.com

ELECTRUM

- * Deposits remain inside the cartridges, avoiding any losses
- * Large capacity of recovery, even in diluted solutions (down to 2 ppm)
- * High efficiency on all metals, especially on the precious ones (Au, Ag, Pd..)
- * Patented equipment
- * Quick return on investment



The unit is designed for the electrolytic recovery of metals contained in concentrated or diluted solutions. It finds its principal applications in the recovery of precious metals (Au, Ag, Pd...), however it can also be used for the recovery of toxic metals in waste waters.

Summary

The advantages of using the ELECTRUM.....	Page 3
Description.....	Page 4
The use of the Cartridge.....	Page 5
Technical characteristics of the ELECTRUM	Page 6
Useful contacts	Page 8

Electrum® Advantages

High capability for recovery of metals.

High pump capacity allowing a large number of turn over in a short scale of time.

Deposit trapped inside the cartridge.

No more loss of metals going back into the solutions.

Easy to melt and refine.

Recovered metals quickly back in process.

Efficient on all metals.

Operating methods available for different materials such as Gold, Palladium, Silver and others in concentrated or rinse bath.

Destruction of cyanide.

The addition of 10 to 20 g/l of the ECN additives creates a continuous destruction of cyanides while the electrolytic recuperation process.

Recuperation of the Palladium in ionic solutions.

The Palladium is recovered by the use of the Pd special cartridges.

Recuperation of the Palladium in colloids.

Addition of the EPd additive and the use of a special cartridge allow the recuperation of the Palladium in colloidal solutions .

Recuperation in Gold Strip.

The addition of 10 to 20 g/l of the EAu additive make possible the gold recuperation in gold strip bath.

Equipment Patented.

A large manufacturing company and well organised customer services to help you on advices.

Amount of metal recovered known by weight.

Calculate and monitor your own material recuperation, data often important in production.

Quick return on investment.

The more the recovery the more return on the investment you will have.

Description of the ELECTRUM

The electrolysis chamber



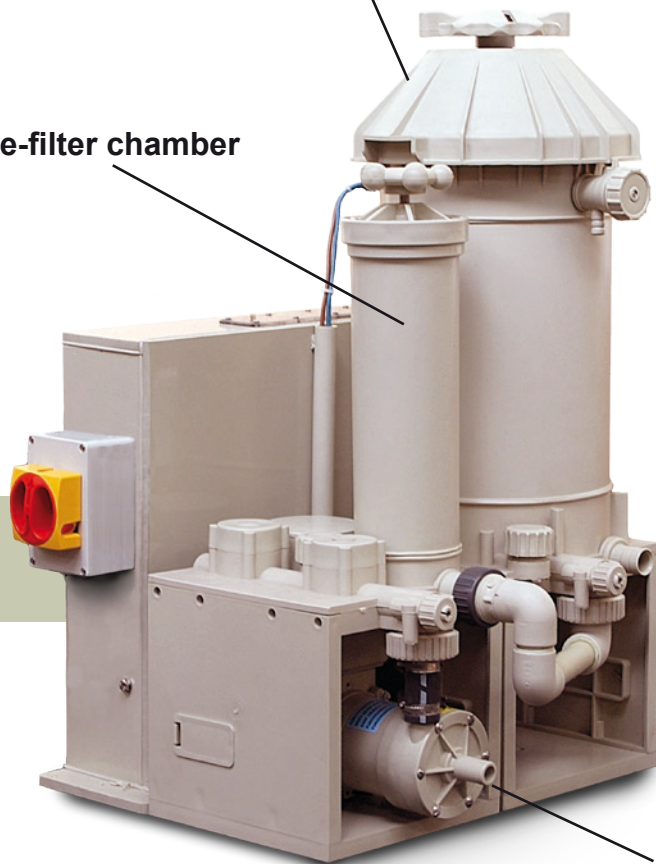
Display window

The rectifier



Pre-filter chamber

Fast opening box



PUMP

CARTRIDGE CAPTIVE Cartridge for Electrolytic Recovery

The deposit is kept within the cartridge

Avoid any loss of metal, even if the deposit is “burnt”

Invisible deposit

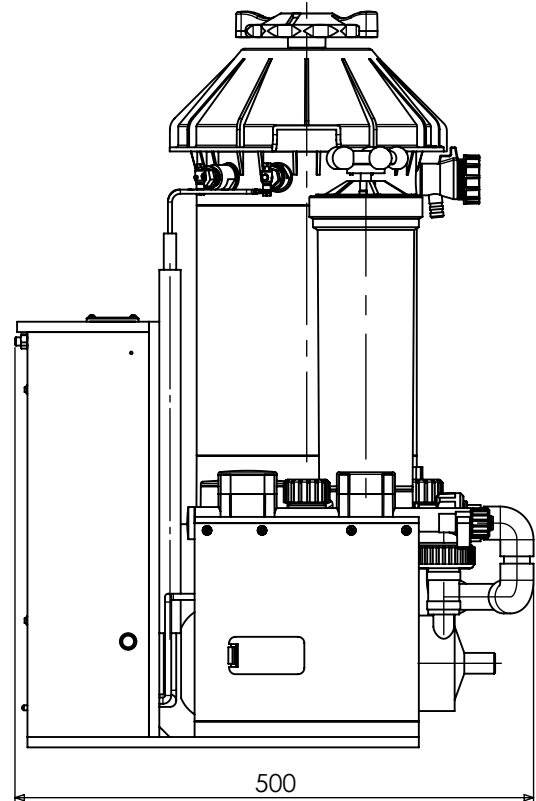
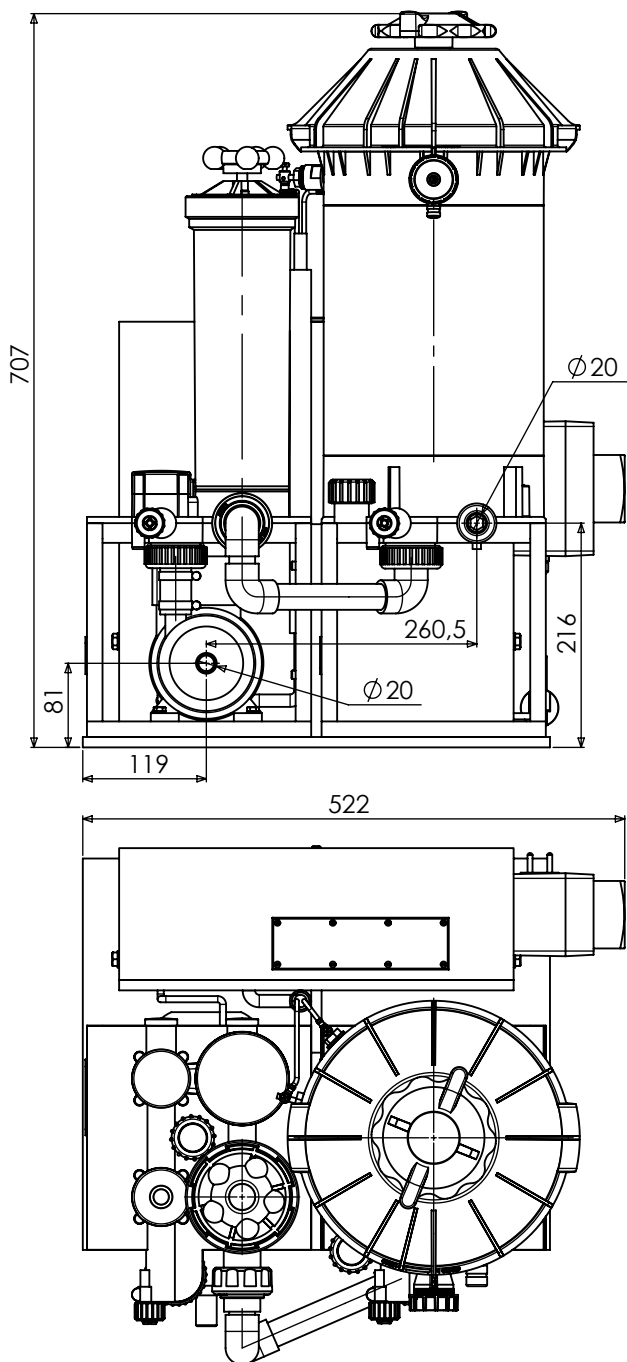
Possibility to know the weight of the deposit by simple weighing before and after

Easy to melt and refine



The Electrum® recovery cartridge (patented) is a porous and combustible container in which the metal extracted from the solution is deposited. The porosity of the walls has been calculated in order to let circulate the liquid but to keep metallic particles inside. When this operation of recovery is finished, the cartridge is rinsed, dried, weighted and sent for treatment where it is burnt. The metal is then melted and refined without any difficulty.

Technical characteristics of the Electrum



PUMP M15

Magnetic centrifugal pump M15 ~
0.045 KW, ~ 1800 l/h



IDENTIFICATION

SIRELEC 52799 - 2,5" \varnothing cartridge
4" CAPTIVE

Volume of liquid contained in the display : nearly 10 liters

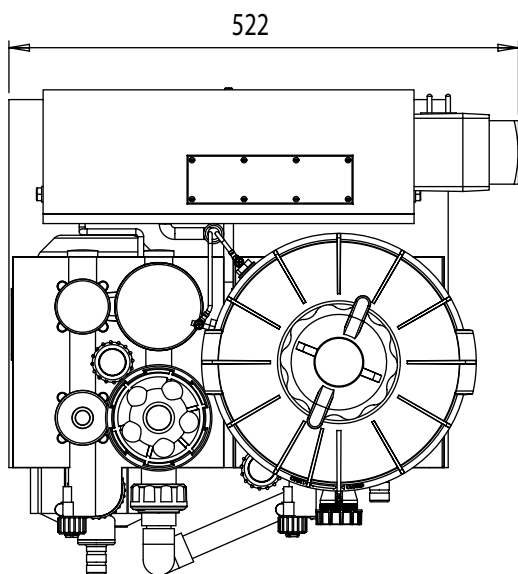
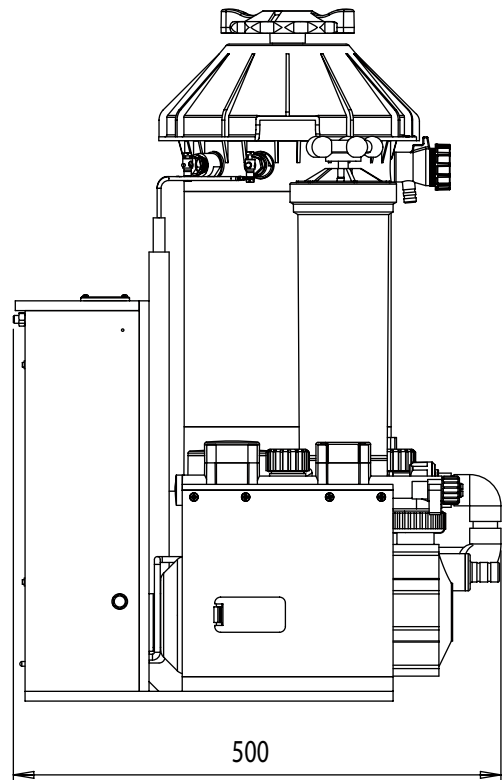
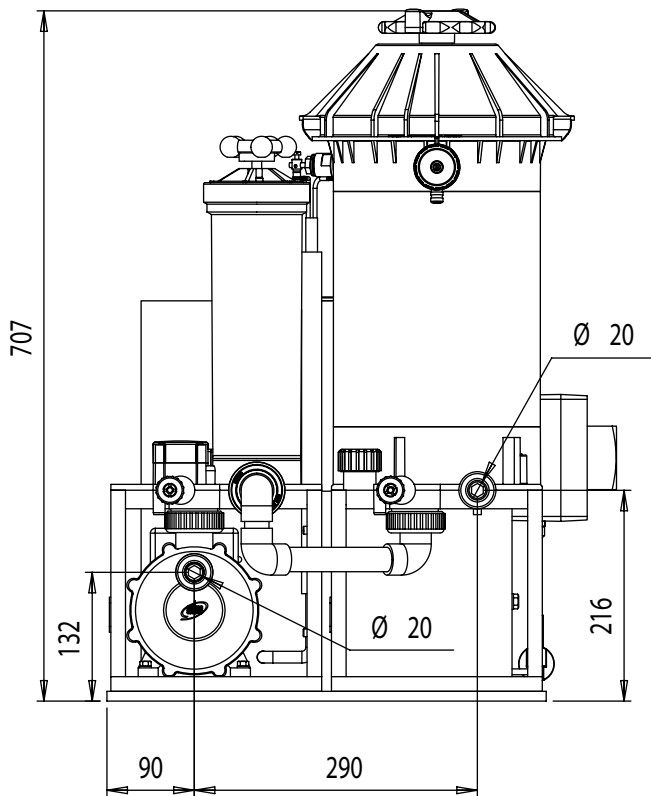
Maximum temperature of use : 60 °C

Electrical input : 220 volts single-phase 50 Hz, Plugs: E.C certified

Power consumption : 330 VA (1,5 A)

Rectifier : 15 Amperes, 10 volts, direct current, stabilized intensity or voltage

EC Certified : Protection against the sur-intensity by fuse and general circuit breaker.



PUMP M35

Magnetic centrifugal pump M35
Automatic repriming
~ 0.18 KW, ~ 3000 l/h



IDENTIFICATION

SIRELEC 52808 - 2,5" \varnothing cartridge
4" CAPTIVE

Volume of liquid contained in the display : nearly 10 liters

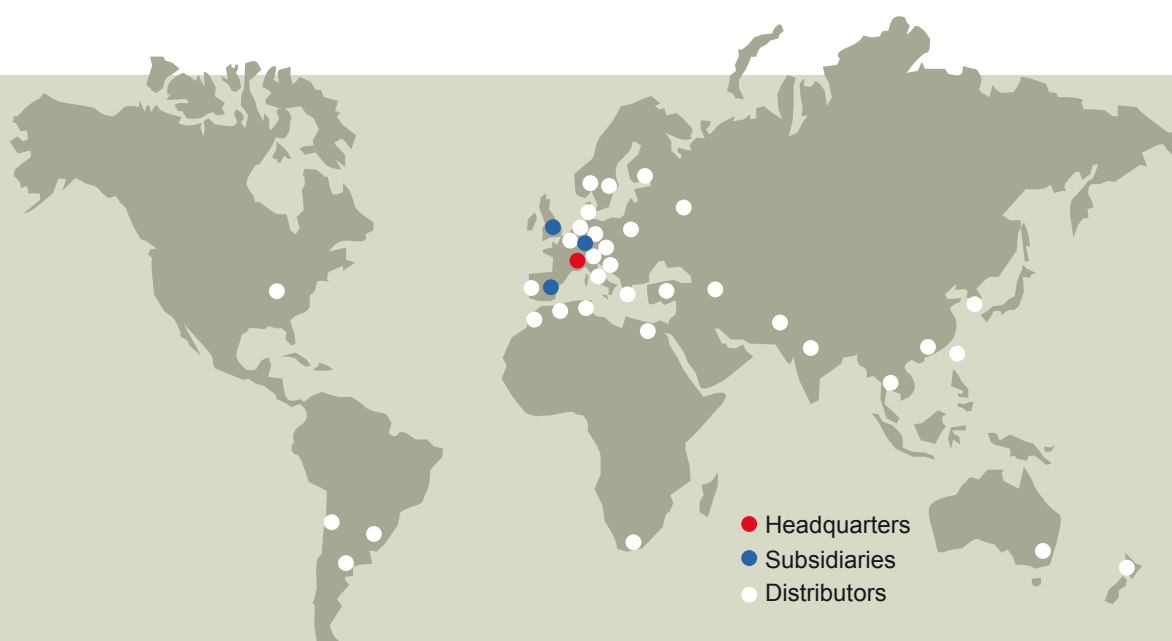
Maximum temperature of use : 60 °C

Electrical input : 220 volts single-phase 50 Hz, Plugs: E.C certified

Power consumption : 330 VA (1,5 A)

Rectifier : 15 Amperes, 10 volts, direct current, stabilized intensity or voltage

EC Certified : Protection against the sur-intensity by fuse and general circuit breaker.



SIEBEC

9 rue des platanes - ZAC Vence Ecoparc
38120 SAINT-ÉGRÈVE

Tél. : +33 (0)4 76 26 12 09 - Fax : +33 (0)4 76 27 04 82
contact@siebec.com

SAS au capital de 3 561 350 € - 499 473 510 RSC GRENOBLE
SIRET 499 473 510 00018 - NAF 2813Z - TVA FR 44499473510